

Self-adhesive Elements

Self-adhesive Elements such as Crystal-it, Crystal Fabric-it, Crystaltex-it Chaton or Crystal Rocks-it are eye-catching and innovative products that come ready-to-apply. They are pressure-sensitive and self-adhesive. When applied to paper and solid surfaces, they can create elegant, romantic or sporty designs.

Colors

-  **Crystal**
001
-  **Light Peach**
362
-  **Light Rose**
223
-  **Sun***
248
-  **Light Siam***
227
-  **Indian Siam**
327
-  **Fuchsia**
502
-  **Dark Siam**
308
-  **Amethyst**
204
-  **Aquamarine**
202
-  **Sapphire**
206
-  **Peridot**
214
-  **Emerald**
205
-  **Topaz**
203
-  **Jet**
280

Effects

-  **Crystal Silver Shade**
001 SSHA
-  **Crystal Aurore Boreale**
001 AB
-  **Crystal Golden Shadow**
001 GSHA
-  **Crystal Dorado**
001 DOR

Numerical Order

001	Crystal
001 AB	Crystal Aurore Boreale
001 DOR	Crystal Dorado
<u>001 GSHA</u>	<u>Crystal Golden Shadow</u>
<u>001 SSHA</u>	<u>Crystal Silver Shade</u>
202	Aquamarine
203	Topaz
204	Amethyst
205	Emerald
206	Sapphire
214	Peridot
223	Light Rose
227	Light Siam*
248	Sun*
280	Jet
308	Dark Siam
<u>327</u>	<u>Indian Siam</u>
362	Light Peach
502	Fuchsia

Alphabetical Order

Amethyst (204)
Aquamarine (202)
Crystal (001)
Crystal Aurore Boreale (001 AB)
Crystal Dorado (001 DOR)
<u>Crystal Golden Shadow (001 GSHA)</u>
<u>Crystal Silver Shade (001 SSHA)</u>
Dark Siam (308)
Emerald (205)
Fuchsia (502)
<u>Indian Siam (327)</u>
Jet (280)
Light Peach (362)
Light Rose (223)
Light Siam* (227)
Peridot (214)
Sapphire (206)
Sun* (248)
Topaz (203)

Classic Colors: This color range offers a wide choice of traditional Swarovski crystal colors.
Exclusive Colors: This color range is offered exclusively by Swarovski.

All colors and effects are available in SS 6 (S6T) and SS 10 (S10T).

* Not RoHS compliant, not suitable for packaging & paper

ARTICLE EXPLANATION

75 000



C	001/001
E	S6T/S10T
S	~62x21 (TAPE: 75x53)
M	16 PCS 70%

75 000	C	E	S	M	70%
Article number	Color assortment	Elements	Motif size in mm and size of the tape the motif is attached to in mm (TAPE)	Minimum order quantity in pieces (PCS)	Documentation size in %
	For details, please refer to the previous color chart at the beginning of this chapter. Color code 1 (001) corresponds to element 1 (S6T); color code 2 (001) corresponds to element 2 (S10T) etc.	Article 2012 in SS 6 (S6T) and SS 10 (S10T)			

11 Self-adhesive Elements

ORDERING EXAMPLE & PRODUCT VARIETY EXPLANATION

75 000	722	001	001
Article number	Carrier film color	Crystal color corresponding to element 1; color of most frequently used element in the motif	Crystal color corresponding to element 2; color of second most frequently used element in the motif
	722 White		
		Please see the respective color chart for all available code references.	

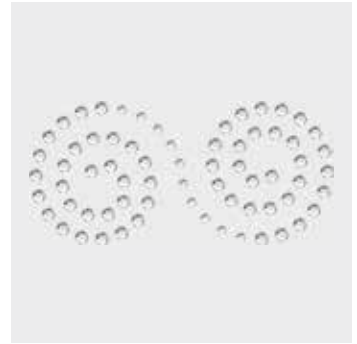


75 000



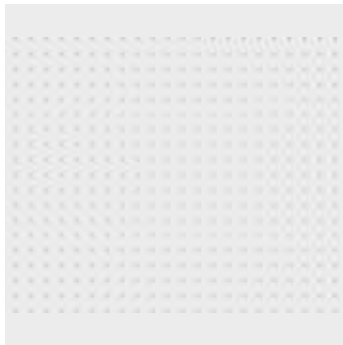
C	001/001
E	S6T/S10T
S	~62x21 (TAPE: 75x53)
M	16 PCS
	70%

75 007



C	001/001/001
E	S6T/S10T/S10T
S	~62x29 (TAPE: 75x53)
M	16 PCS
	65%

75 010



C	001
E	S6T
S	~272x182 (TAPE: 300x210)
M	1 PCS
	20%

75 011



C	001
E	S10T
S	~273x183 (TAPE: 300x210)
M	1 PCS
	20%

75 017



C	001AB
E	S6T
S	~60x85 (TAPE: 75x105)
M	8 PCS
	45%

75 018



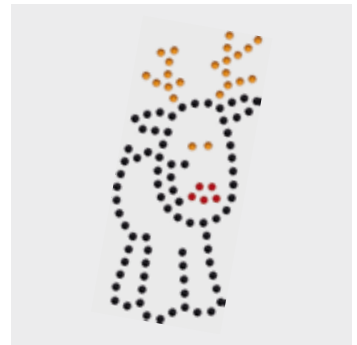
C	001
E	S6T
S	~47x86 (TAPE: 75x105)
M	8 PCS
	45%

75 027



C	204/502/001AB
E	S6T/S6T/S6T
S	~51x32 (TAPE: 75x53)
M	16 PCS
	80%

75 036



C	280/203/227
E	S6T/S6T/S6T
S	~31x72 (TAPE: 75x105)
M	8 PCS
	55%

75 037



C	001/227/280
E	S6T/S6T/S10T
S	~49x74 (TAPE: 75x105)
M	8 PCS
	55%

75 039



C	001AB/001
E	S6T/S10T
S	~35x31 (TAPE: 75x53)
M	16 PCS
	100%

75 042



C	001DOR/205/227
E	S6T/S6T/S6T
S	~59x33 (TAPE: 75x53)
M	16 PCS
	65%

75 047



C	001
E	S6T
S	~60x41 (TAPE: 75x53)
M	16 PCS
	70%

75 070



C	001/202/001AB
E	S6T/S6T/S10T
S	~46x50 (TAPE: 75x105)
M	8 PCS
	80%

75 071



C	001/001AB
E	S6T/S10T
S	~59x41 (TAPE: 75x53)
M	16 PCS
	70%

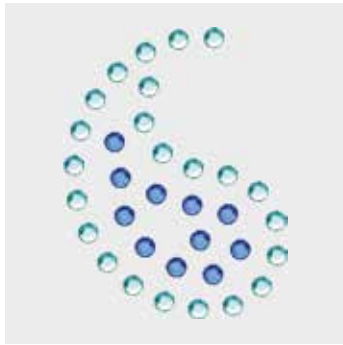
75 081



C	223
E	S6T
S	~41x34 (TAPE: 75x53)
M	16 PCS
	100%

ARTICLE EXPLANATION

70 809



C	202/206
E	S10T/S10T
S	~30x38 (TAPE: 75x53)
M	16 PCS 100%

70 809	C	E	S	M	100%
Article number	Color assortment	Elements	Motif size in mm and size of the tape the motif is attached to in mm (TAPE)	Minimum order quantity in pieces (PCS)	Documentation size in %
	For details, please refer to the color chart at the beginning of this chapter. Color code 1 (202) corresponds to element 1 (S10T); color code 2 (206) corresponds to element 2 (S10T) etc.	Article 2012 in SS 6 (S6T) and SS 10 (S10T)			

ORDERING EXAMPLE & PRODUCT VARIETY EXPLANATION

70 809	012	202	206
Article number	Carrier film color	Crystal color corresponding to element 1; color of most frequently used element in the motif	Crystal color corresponding to element 2; color of second most frequently used element in the motif
	012 Black 022 White	Please see the respective color chart for all available code references.	

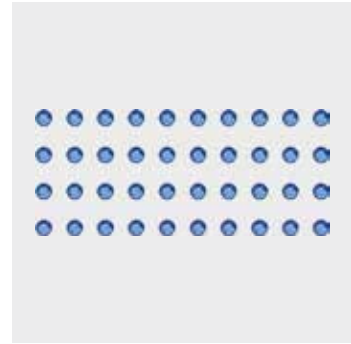


70 008



C	001
E	S10T
S	~39x19 (TAPE: 75x53)
M	16 PCS
	100%

70 010



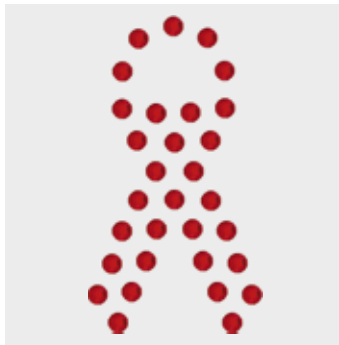
C	206
E	S10T
S	~49x21 (TAPE: 75x53)
M	16 PCS
	80%

70 011



C	203
E	S10T
S	~37x29 (TAPE: 75x53)
M	16 PCS
	100%

70 070



C	227
E	S10T
S	~42x23 (TAPE: 75x53)
M	16 PCS
	100%

70 214



C	001
E	S10T
S	~30x28 (TAPE: 75x53)
M	16 PCS
	100%

70 303



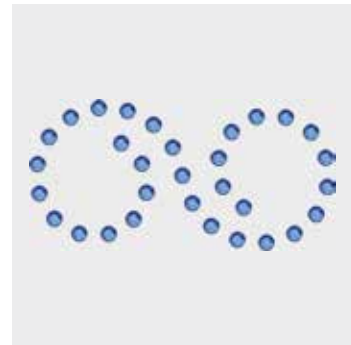
C	202
E	S10T
S	~53x42 (TAPE: 75x53)
M	16 PCS
	80%

70 310



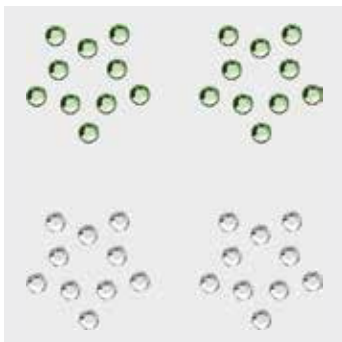
C	280
E	S10T
S	~51x30 (TAPE: 75x53)
M	16 PCS
	80%

70 314



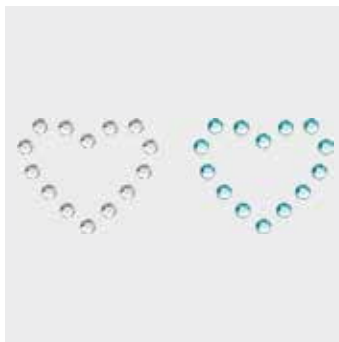
C	206
E	S10T
S	~51x25 (TAPE: 75x53)
M	16 PCS
	80%

70 802



C	214/001
E	S10T/S10T
S	~39x40 (TAPE: 75x53)
M	16 PCS
	100%

70 803



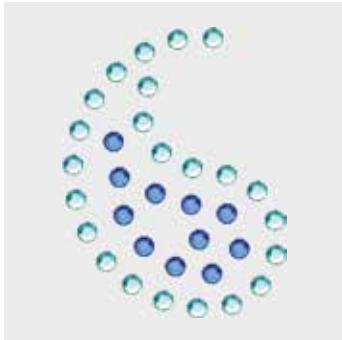
C	202/001
E	S10T/S10T
S	~56x20 (TAPE: 75x53)
M	16 PCS
	75%

70 807



C	203/280/001
E	S10T/S10T/S10T
S	~55x35 (TAPE: 75x53)
M	16 PCS
	75%

70 809



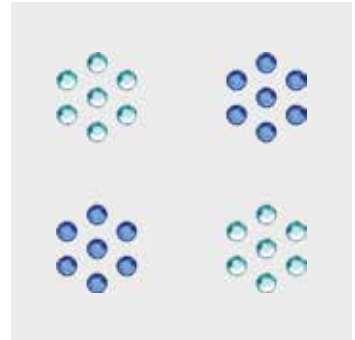
C	202/206
E	S10T/S10T
S	~30x38 (TAPE: 75x53)
M	16 PCS
	100%

70 813



C	001/205/214
E	S10T/S10T/S10T
S	~39x34 (TAPE: 75x53)
M	16 PCS
	100%

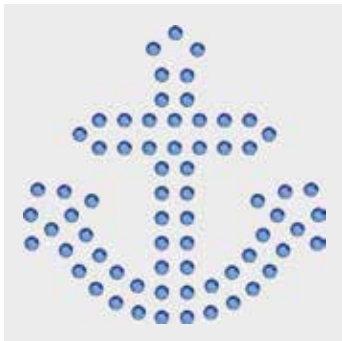
70 815



C	202/206
E	S10T/S10T
S	~33x32 (TAPE: 75x53)
M	16 PCS
	100%

71 000

01



C	206
E	S6T
S	~40x39 (TAPE: 75x53)
M	16 PCS
	100%

71 001



C	001AB/205/202
E	S6T/S6T/S6T
S	~42x36 (TAPE: 75x53)
M	16 PCS
	100%

71 003

01



C	001
E	S6T
S	~37x38 (TAPE: 75x53)
M	16 PCS
	100%

71 009

01



C	204/223
E	S6T/S6T
S	~22x22 (TAPE: 38x53)
M	32 PCS
	100%

71 014

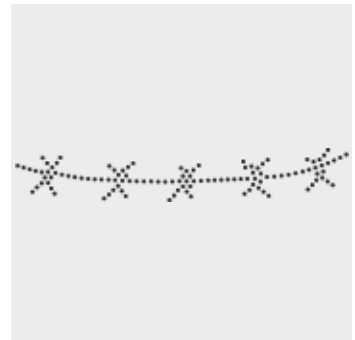
01



C	001DOR/280
E	S6T/S6T
S	~63x42 (TAPE: 75x53)
M	16 PCS
	60%

71 015

01



C	280
E	S6T
S	~26x163 (TAPE: 43x210)
M	7 PCS
	27%

71 016

01



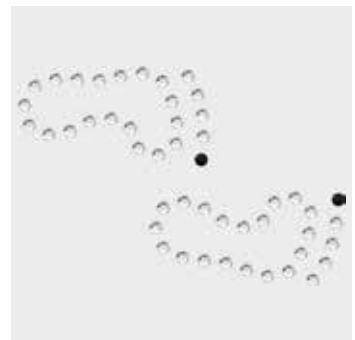
C	001AB
E	S6T
S	~21x92 (TAPE: 75x105)
M	8 PCS
	45%

71 020



C	001
E	S6T
S	~18x30 (TAPE: 38x53)
M	32 PCS
	100%

71 028



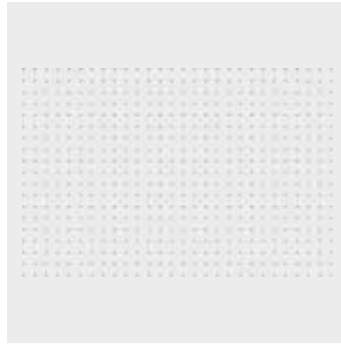
C	001/280
E	S6T/S6T
S	~48x32 (TAPE: 75x53)
M	16 PCS
	90%

71 046



C	206/202
E	S6T/S6T
S	~48x35 (TAPE: 75x53)
M	16 PCS 85%

71 401



C	001
E	S10T
S	~273x183 (TAPE: 300x210)
M	1 PCS 15%

ARTICLE EXPLANATION

Crystal Fabric-it consists of Crystal Fabric with a self-adhesive film.

57 000



C	001 AB
W	001, 002, 003, 005, 010, 015
M	10 M* 100%

57 000	C	W	M	100%
Article number	Color of crystals	Width of the banding	Minimum order quantity in meters (M)	Documentation size in %

ORDERING EXAMPLE & PRODUCT VARIETY EXPLANATION

57 000	002		010	001 AB	
Article number	3-digit code for width		Color of film	Color of crystals	
	001	1 cm	1 010 Transparent	001 AB	Crystal Aurore Boreale
	002	2 cm	1 012 Black	001 CAL	Crystal Comet Argent Light
	003	3 cm		001 COP	Crystal Copper
	005	5 cm		001 DOR	Crystal Dorado
	010	10 cm		001 GSHA	Crystal Golden Shadow
	015	15 cm		001 MLGLD	Crystal Metallic Light Gold
				001 MOL	Crystal Moonlight
				280 HEM	Jet Hematite

* Please note: Bandings can be divided.

OVERVIEW OF AVAILABLE COLORS & EFFECTS

57 000



C	001 AB
W	001, 002, 003, 005, 010, 015
M	10 M* 100%

57 000



C	001 CAL
W	001, 002, 003, 005, 010, 015
M	10 M* 100%

57 000



C	001 COP
W	001, 002, 003, 005, 010, 015
M	10 M* 100%

57 000



C	001 DOR
W	001, 002, 003, 005, 010, 015
M	10 M* 100%

57 000



C	001 GSHA
W	001, 002, 003, 005, 010, 015
M	10 M* 100%

57 000



C	001 MLGLD
W	001, 002, 003, 005, 010, 015
M	10 M* 100%

57 000



C	001 MOL
W	001, 002, 003, 005, 010, 015
M	10 M* 100%

57 000



C	280 HEM
W	001, 002, 003, 005, 010, 015
M	10 M* 100%

	Width in cm						Color of Film	
	001	002	003	005	010	015	I010 Transparent	I012 Black
57 000								
Crystal Effects								
Transparent Effects								
Crystal Aurore Boreale (001 AB)	■	■	■	■	■	■	■	■
Crystal Copper (001 COP)	■	■	■	■	■	■	■	■
Crystal Golden Shadow (001 GSHA)	■	■	■	■	■	■	■	■
Crystal Moonlight (001 MOL)	■	■	■	■	■	■	■	■
Metallic Effects								
Crystal Comet Argent Light (001 CAL)	■	■	■	■	■	■	■	■
Crystal Dorado (001 DOR)	■	■	■	■	■	■	■	■
Crystal Metallic Light Gold (001 MLGLD)	■	■	■	■	■	■	■	■
Color Effects								
Metallic Effects								
Jet Hematite (280 HEM)	■	■	■	■	■	■	■	■

ARTICLE EXPLANATION

57 353



C	012-280HEM
S	~36x31
M	126 PCS
	100%

57 353	S	M	100%
Article number	Motif size in mm	Minimum order quantity in pieces (PCS)	Documentation size in %

ORDERING EXAMPLE & PRODUCT VARIETY EXPLANATION

57 353	012	280 HEM
Article number	Type and color of base material	Color of crystals
	I It version	001 AB Crystal Aurore Boreale
	010 Transparent	001 CAL Crystal Comet Argent Light
	012 Black	001 COP Crystal Copper
		001 DOR Crystal Dorado
		001 GSHA Crystal Golden Shadow
		001 MLGLD Crystal Metallic Light Gold
		001 MOL Crystal Moonlight
		280 HEM Jet Hematite

All Crystal Fabric-it Motifs are available in certain color/film variations (see colormatrix p. 366). Generally all current Crystal Fabric Motifs are available as Crystal Fabric-it version as soon as they respect the maximum possible size. Furthermore, it may occur that slight adjustments are needed to fulfill the design requirements of Crystal Fabric-it.



57 351



C	010-001AB	
S	~34x30	
M	140 PCS	100%

57 352



C	010-001AB	
S	~42x41	
M	90 PCS	90%

57 353

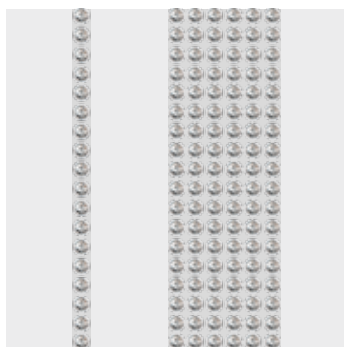


C	012-280HEM	
S	~36x31	
M	126 PCS	100%

ARTICLE EXPLANATION

Crystaltext-it Bandings are available with transparent and black base material and have a self-adhesive film for the application.

62 000



R	001-012; 57
SS	SS 6 (2038)
M	10 M* 100%

62 000	R	SS	M	100%
Article number	This article is available in 1-12 and 57 rows.	Stone size	Minimum Order Quantity in meters (M)	Documentation size in %

ORDERING EXAMPLE & PRODUCT VARIETY EXPLANATION

62 000	006	I010	001
Article number	3-digit code for number of rows	Type and color of base material I It version 010 Transparent 012 Black	Color of crystals Please see the respective product matrix for all available code references.

* Please note: Bandings can be divided.

	Stone Size		Base Material	
	SS 6	SS 10	I010 Transparent	I012 Black
<p>62 000* 62 010** 62 011***</p>				
Crystal				
Crystal F (001)	■	■	■	■
Colors				
Plain Colors				
Amethyst F (204)	■	■	■	■
Aquamarine F (202)	■	■	■	■
Black Diamond F (215)	■	■	■	■
Fuchsia F (502)	■	■	■	■
Jet F (280)	■	■	■	■
Light Rose F (223)	■	■	■	■
Light Siam F (227)	■	■	■	■
Peridot F (214)	■	■	■	■
Sapphire F (206)	■	■	■	■
Silk F (391)	■	■	■	■
Smoked Topaz F (220)	■	■	■	■
Crystal Effects				
Transparent Effects				
Crystal AB F (001 AB)	■	■	■	■
Crystal Golden Shadow F (001 GSHA)	■	■	■	■
Crystal Luminous Green F (001 LUMG)	■	■	■	■
Crystal Silver Shade F (001 SSHA)	■	■	■	■
Metallic Effects				
Crystal Dorado F (001 DOR)	■	■	■	■
Crystal Iridescent Green F (001 IRIG)	■	■	■	■
Crystal Rose Gold F (001 ROGL)	■	■	■	■
Color Effects				
Metallic Effects				
Jet Hematite F (280 HEM)	■	■	■	■

* Not available in 13–56 rows (62 000).

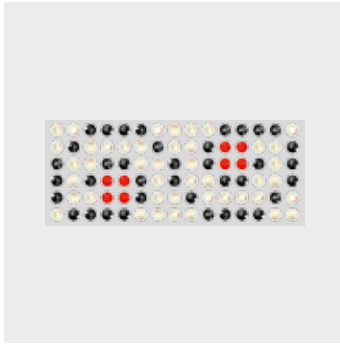
** Not available in 13–21 and 23–43 rows (62 010).

*** Not available in 8–44 rows (62 011).

ARTICLE EXPLANATION

Crystaltex-it Bandings Motifs are available with transparent and black base material and have a self-adhesive film for the application. All Standard Crystaltex-it Banding Motifs are also available as a Hotfix version.

66 021



C	I010-001AB/280HEM/227
E	S6/S6/S6
S	~39x16
M	18.749 M (480 PCS) 85%

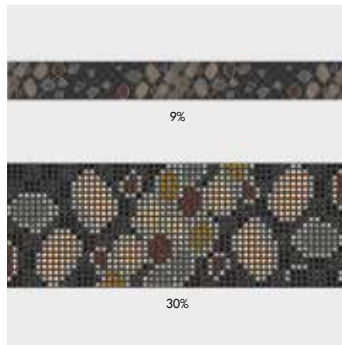
66 021	C	E	S	M	100%
Article number	Color assortment	Elements	Motif size in mm	Minimum Order Quantity in meters (M); pieces (PCS)	Documentation size in %
	Color of base material (I010) is separated from crystal colors with a hyphen. Color code 1 (001 AB) corresponds with element 1; color code 2 (280 HEM) corresponds with element 2 etc.	Crystaltex-it Bandings Motifs are available in stone sizes SS 6 and SS 10 in close stone setting.			

ORDERING EXAMPLE & PRODUCT VARIETY EXPLANATION

66 021	I010	001 AB	280 HEM	227
Article number	Type and color of base material	Crystal color corresponding to element 1; color of most frequently used element in the motif	Crystal color corresponding to element 2; color of second most frequently used element in the motif	Crystal color corresponding to element 3; color of third most frequently used element in the motif
	I It version 010 Transparent 012 Black	Please see the respective product matrix for all available code references.		

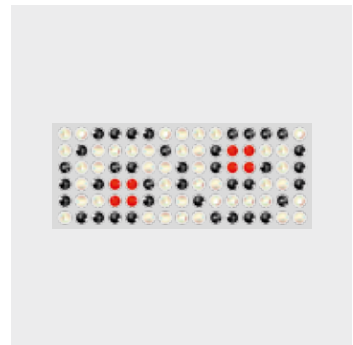


66 001



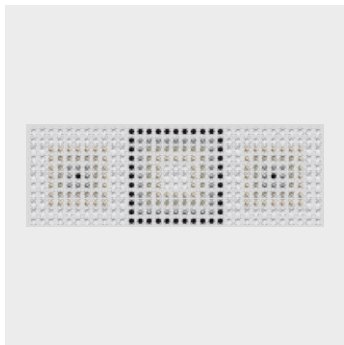
C	I012-280HEM/280/001SSHA/ 001GSHA/220/215/001DOR
E	S6/S6/S6/S6/S6/S6
S	~250X55
M	5 M (20 PCS)

66 021



C	I010-001AB/280HEM/227
E	S6/S6/S6
S	~39x16
M	18.749 M (480 PCS) 85%

66 036



C	I010-001/001SSHA/215/280HEM/280
E	S6/S6/S6/S6/S6
S	~86x29
M	4.297 M (50 PCS) 45%

PRODUCT DETAILS

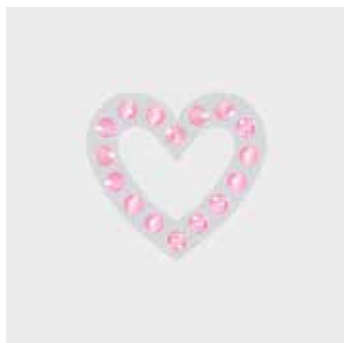
Article Number	Standard Motifs (as shown)				Modified Standard Motifs (change of color)			
	Packing Unit = MOQ		MOQ for Samples		MOQ		MOQ for Samples	
	in meters	in pieces	in meters	in pieces	in meters	in pieces	in meters	in pieces
66 001	4.297	50	0.086	1	8.593	100	0.687	8
66 021	4.687	120	0.039	1	18.749	480	1.875	48
66 036	4.297	50	0.086	1	8.593	100	0.687	8

The MOQ for Standard Motifs is 1 packing unit (approx. 5 meters). Samples can be ordered below 1 packing unit. If the Standard Motifs are modified (color changes), please refer to the detailed MOQ information in the table above. This product must be ordered in meters.

ARTICLE EXPLANATION

Crystaltext-it Motifs are available with transparent and black base material and have a self-adhesive film for the application. All Standard Crystaltext-it Motifs are also available as a Hotfix version.

65 281



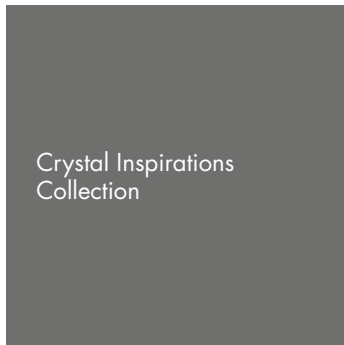
C	I010-223
E	S10
S	~24x22
M	105 PCS 100%

65 281	C	E	S	M	100%
Article number	Color assortment	Elements	Motif size in mm	Minimum order quantity in pieces (PCS)	Documentation size in %
	Color of base material (I010) is separated from crystal colors with a hyphen. Color code 1 (223) corresponds with element 1.	Crystaltext-it Motifs are available in stone sizes SS 6 and SS 10.			

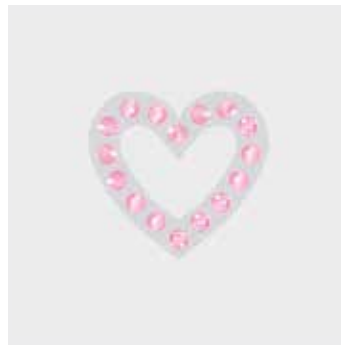
11 Self-adhesive Elements

ORDERING EXAMPLE & PRODUCT VARIETY EXPLANATION

65 281	I010	223
Article number	Type and color of base material	Crystal color corresponding to element 1; color of most frequently used element in the motif
	I It version	
	010 Transparent 012 Black	Please see the respective product matrix for all available code references.



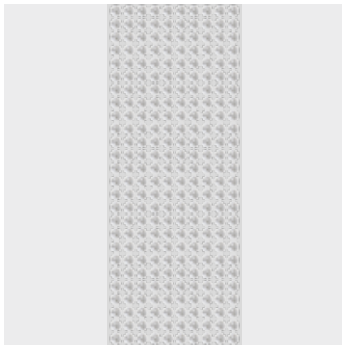
65 281 F/W 2010/11



C	I010-223	
E	S10	
S	~24x22	
M	105 PCS	100%

ARTICLE EXPLANATION

62 030



R	002-010, 088
SS	PP 9 (1028)
M	5 M* 100%

62 031 (Honeycomb)



R	003-006, 10, 17
SS	PP 9 (1028)
M	5 M* 100%

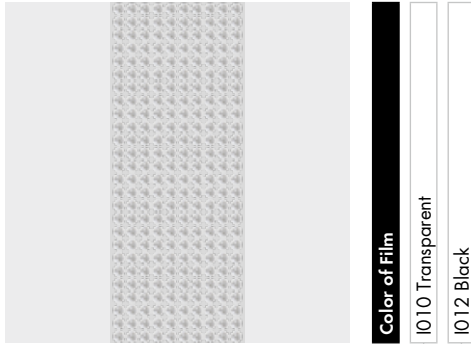
62 030	R	SS	M	100 %
Article number	This article is available in 2-10 and 88 rows.	Stone size	Minimum order quantity in metre (M)	Documentation size in %
62 031	R	SS	M	100 %
Article number	This article is available in 3-6, 10 and 17 rows.	Stone size	Minimum order quantity in metre (M)	Documentation size in %

ORDERING EXAMPLE & PRODUCT VARIETY EXPLANATION

62 030	010	I010	001
Article number	3-digit code for number of rows	Type and color of base material I It Version 010Transparent 012 Black	Color of crystals Please see the respective product matrix for all available code references.
62 031	003	I010	001
Article number	3-digit code for number of rows	Type and color of base material I It Version 010Transparent 012Black	Color of crystals Please see the respective product matrix for all available code references.

* Please note: Bandings can be divided.

62 030



Crystal		I010 Transparent	I012 Black
Crystal F (001)			
Colors			
Plain Colors			
Aquamarine F (202)			
Black Diamond F (215)			
Dark Indigo F (288)			
Fuchsia F (502)			
Indicolite F (379)			
Jet F (280)			
Khaki F (550)			
Light Siam F (227)			
Rose F (209)			
Smoked Topaz F (220)			
Tanzanite F (539)			
Crystal Effects			
Transparent Effects			
Crystal Aurore Boreale F (001 AB)			
Crystal Golden Shadow F (001 GSHA)			
Crystal Silver Shade F (001 SSHA)			
Metallic Effects			
Crystal Dorado (001 DOR)			
Crystal Iridescent Green F (001 IRIG)			
Color Effects			
Metallic Effects			
Jet Hematite (280 HEM)			

62 031 (Honeycomb)

	3 rows	4 rows	5 rows	6 rows	10 rows	17 rows	
Crystal							
Crystal F (001)	■	■	■	■	■	■	■
Colors							
Plain Colors							
Aquamarine F (202)	■	■	■	■	■	■	■
Black Diamond F (215)	■	■	■	■	■	■	■
Dark Indigo F (288)	■	■	■	■	■	■	■
Jet F (280)	■	■	■	■	■	■	■
Crystal Effects							
Transparent Effects							
Crystal Aurore Boreale F (001 AB)	■	■	■	■	■	■	■
Crystal Golden Shadow F (001 GSHA)	■	■	■	■	■	■	■
Crystal Silver Shade F (001 SSHA)	■	■	■	■	■	■	■
Metallic Effects							
Crystal Dorado (001 DOR)	■	■	■	■	■	■	■
Crystal Iridescent Green F (001 IRIG)	■	■	■	■	■	■	■
Color Effects							
Metallic Effects							
Jet Hematite (280 HEM)	■	■	■	■	■	■	■

ARTICLE EXPLANATION

Crystaltex-it Chaton Motifs are available with a transparent and black base material and have a self-adhesive film for application. All Standard Crystaltex-it Chaton Motifs are also available as a Hotfix version.

85 132



C	I010-202/001AB/379
E	PP9/PP9/PP9
S	~35x35
M	36 PCS 100%

85 132	C	E	S	M	100%
Article number	Color assortment	Elements	Motif size in mm	Minimum order quantity in pieces (PCS)	Documentation size in %
	Color of base material (I010) is separated from crystal colors with a hyphen. Color code 1 (202) corresponds with element 1; color code 2 (001 AB) corresponds with element 2 etc.	Crystaltex-it Chaton Motifs are available in stone size PP 9.			

ORDERING EXAMPLE & PRODUCT VARIETY EXPLANATION

85 132	I010	202	001 AB	379
Article number	Type and color of base material	Crystal color corresponding to element 1; color of most frequently used element in the motif	Crystal color corresponding to element 2; color of second most frequently used element in the motif	Crystal color corresponding to element 3; color of third most frequently used element in the motif
	I It version 010 Transparent 012 Black	Please see the respective product matrix for all available code references.		

Self-adhesive Elements

Crystaltex-it Chaton Motifs

Standard Collection



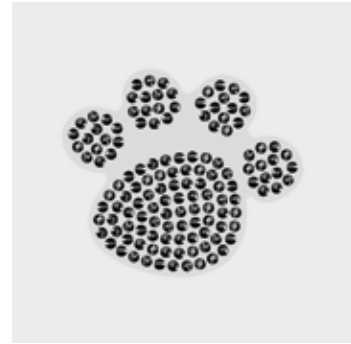
Standard Collection

85 102



C	I010-001	
E	PP9	
S	~23x14	
M	135 PCS	100%

85 107



C	I010-280HEM	
E	PP9	
S	~32x28	
M	60 PCS	100%

85 123



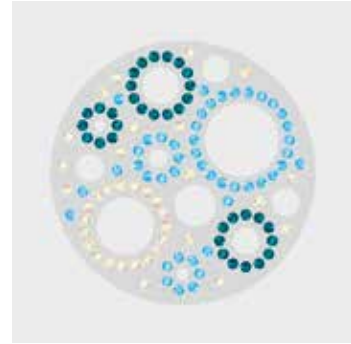
C	I010-379/001DOR/280	
E	PP9/PP9/PP9	
S	~49x53	
M	30 PCS	80%

85 125



C	I010-280	
E	PP9	
S	~26x30	
M	60 PCS	100%

85 132

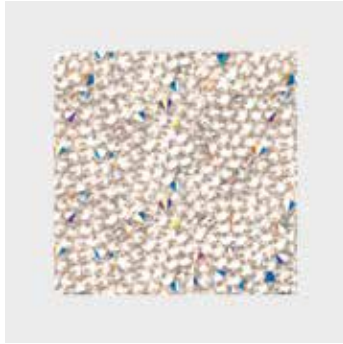


C	I010-202/001AB/379	
E	PP9/PP9/PP9	
S	~35x35	
M	36 PCS	100%

CRYSTAL ROCKS-IT & CRYSTAL FINE ROCKS-IT

With Crystal Rocks-it (72 003) and Crystal Fine Rocks-it (74 000) two absolutely popular products are available with the easy-to-use "-it" self-adhesive technique.

72 003



C	I010-001AB
S	~40x40
M	48 PCS
	80%

74 000



C	I012-280
S	~97x100
M	9 PCS
	40%

ORDERING EXAMPLE & PRODUCT VARIETY EXPLANATION

72 003	I010	001 SSHA
Article number	Color of film	Color of crystals
	I010 Transparent	001 AB Crystal Aurore Boreale
	I012 Black	001 BBL Crystal Bermuda Blue
		001 CAL Crystal Comet Argent Light
		001 GSHA Crystal Golden Shadow
		001 MLGLD Crystal Metallic Light Gold
		001 METSI Crystal Metallic Silver
		001 REDM Crystal Red Magma
		001 SSHA Crystal Silver Shade
		280 Jet

OVERVIEW OF AVAILABLE COLORS & EFFECTS*

Jet (280)



012 Black

Crystal Aurore Boreale (001 AB)



010 Transparent

012 Black

Crystal Bermuda Blue (001 BBL)



012 Black

Crystal Golden Shadow (001 GSHA)



010 Transparent

Crystal Red Magma (001 REDM)



010 Transparent

012 Black

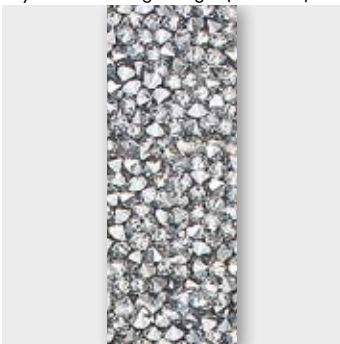
Crystal Silver Shade (001 SSHA)



010 Transparent

012 Black

Crystal Comet Argent Light (001 CAL)



010 Transparent

Crystal Metallic Light Gold (001 MLGLD)



010 Transparent

Crystal Metallic Silver (001 METSI)



010 Transparent

012 Black

* Please note that all effects are also available for Crystal Fine Rocks-it.

72 000 – 72 999 (Crystal Rocks-it)		74 000 – 74 999 (Crystal Fine Rocks-it)	
Color of Film		IO10 Transparent	IO12 Black
Colors			
Plain Colors			
● Jet (280)			■
Crystal Effects			
Transparent Effects			
● Crystal Aurore Boreale (001 AB)		■	■
● Crystal Bermuda Blue (001 BBL)			■
● Crystal Golden Shadow (001 GSHA)		■	
● Crystal Red Magma (001 REDM)		■	■
● Crystal Silver Shade (001 SSHA)		■	■
Metallic Effects			
● Crystal Comet Argent Light (001 CAL)		■	
● Crystal Metallic Light Gold (001 MLGLD)		■	
● Crystal Metallic Silver (001 METSI)		■	■

A special motif is any individual design created by the customer, which is different from the Self-adhesive Elements Standard or Crystal Inspirations Collections. This service opens up many customization possibilities and enables you to profit from Swarovski's longtime experience and design expertise. A range of customization options for existing Motifs is available (see "Customization Possibilities" below). You may also submit sketches of a design that will suit your special needs – such as a brand image or an image to suit a particular sales campaign. This will then be made up according to your specifications using Computer Aided Design which allows for easy adjustments according to your needs.

CUSTOMIZATION POSSIBILITIES FOR CRYSTAL-IT & CRYSTAL TATTOO

- Change of elements of an existing motif
- Change of size of an existing motif
- Logos or brand names
- Up to three colors with two elements (S6T, S10T) possible per Crystal-it / Crystal Tattoo motif

CUSTOMIZATION POSSIBILITIES FOR CRYSTAL FABRIC-IT MOTIFS

- Maximum motif size: 620x1800 mm
- Minimum motif size: 10x10 mm
- Minimum width of holes within motifs: 3 mm
- Minimum Crystal Fabric-it surface: 3 mm
- Minimum size of the smallest element within a motif: 10x10 mm

It is generally possible to draw motifs with a minimum gap of 3 mm between the outlines. However, due to the tolerance level of the crystals being applied onto carrier film, the final Crystal Fabric-it Motifs may generally differ from the sketches or prints in relation to the motifs' outline, especially with regards to spaces that are smaller than 4 mm. Therefore the motif, and by extension the product itself, may be subject to individual variations with each reproduction. These variations are caused by technical production related factors. As these variations are not deemed to be defects, warranty claims shall therefore not be entertained by Swarovski.

Special productions are generally offered to all our customers if feasibility is given and our General Terms and Conditions are applied. Please note that the simple order of a design does not grant exclusive production of this design to the customer.

If detailed information on the possible tolerances is needed (e.g. cavity production for a metal part), please contact Swarovski who will place an application request within our application database.

CUSTOMIZATION POSSIBILITIES FOR CRYSTALTEX-IT BANDINGS MOTIFS

Motifs come in rows and per meter

Pattern repeats:

- Min. size 1x2 rows
- Max. size 50 cm x maximum rows (44 or 57)
- Up to eight colors are possible for Crystaltex-it Bandings Motifs using either SS 6 or SS 10 stones (mix of stone sizes is not possible).

Special productions are generally offered to all our customers if feasibility is given and our General Terms and Conditions are applied.

Please note that the simple order of a design does not grant exclusive production of this design to the customer.

Bandings may be delivered cut up to 3 pieces per packaging.

In case the size of the motif is smaller than 50 cm, the packing unit might be under 5 meters.

CUSTOMIZATION POSSIBILITIES FOR CRYSTALTEX-IT MOTIFS

Min. size: 12x12 mm (4x4 stones)

Max. size: 122x162 mm

Distance between the Flat Backs SS 10 (from stone centre to stone centre):

- Max. 4.8 mm
- Min. 3.4 mm

Distance between the Flat Backs SS 6 (from stone centre to stone centre):

- Max. 3.7 mm
- Min. 2.4 mm

Up to eight colors are possible for Crystaltext-it Motifs using either SS 6 or SS 10 stones (mix of stone sizes is not possible).

Special productions are generally offered to all our customers if feasibility is given and our General Terms and Conditions are applied.

Please note that the simple order of a design does not grant exclusive production of this design to the customer.

CUSTOMIZATION POSSIBILITIES FOR CRYSTALTEX-IT CHATON MOTIFS

▪ Min. size: 10x10 mm

▪ Max. size: 122x157 mm

Distance between Chatons 1028 PP 9 (from stone center to stone center): min. 1.70 mm – max. 4.5 mm

Up to four colors are possible for Crystaltext and Crystaltext-it Chaton Motifs using stone size PP 9.

CUSTOMIZATION POSSIBILITIES FOR CRYSTAL ROCKS-IT

▪ Min. size: 15x15 mm or effective surface of 2.25 cm²

▪ Max. size: 400x330 mm

▪ Min. Crystal Rocks surface: 9 mm

▪ Min. width of holes within motifs: 3 mm

▪ Min. size of the smallest element within a motif: 15x15 mm or effective surface of 2.25 cm²

Due to production issues, motifs with edges and angles of less than 90° need to be rounded off. Tolerance value = 3 mm.

If detailed information on the possible tolerances is needed (e.g. cavity production for a metal part), please contact Swarovski who will place an application request within our application database.

CUSTOMIZATION POSSIBILITIES FOR CRYSTAL FINE ROCKS-IT

▪ Min. size: 15x15 mm

▪ Max. size: 400x330 mm

▪ Min. Crystal Fine Rocks surface: 4 mm

▪ Min. width of holes within motifs: 3 mm

▪ Min. size of the smallest element within a motif: 15x15 mm

If detailed information on the possible tolerances is needed (e.g. cavity production for a metal part), please contact Swarovski who will place an application request within our application database.

ORDERING PROCESS

Send the request with a drawing you wish to order to your nearest Swarovski sales office. Make sure you include all measurements to the desired motif. Please also indicate, which product group your special motif refers to (Crystal-it, Crystal Tattoos, Crystal Fabric-it, Crystaltex-it, Crystaltex-it Chaton, Crystal Rocks-it, Crystal Fine Rocks-it). You will then receive a quotation including your article number, minimum order quantity, price and the line drawing of your special motif in PDF format. Please contact your Swarovski sales office again if any changes need to be made. Your special motif will be produced and delivered following your confirmation.

PLEASE NOTE

Please always submit your drawing of the desired motif to represent it in the actual size you require. A small sketch, when enlarged to the desired size, will have blurred lines that will make it difficult to correctly reinterpret. Pictures or drawings representing 100% size of the design or very good quality scans in JPG, BMP or DXF format will ensure that we have clear data to work with. These can also be sent via e-mail or on a CD-ROM. If sending a sewing pattern, please include the whole pattern and not just cut outs. When the sketch is submitted as a hard copy by fax or e-mail, please include a scale legend (e.g. copy/scan with ruler next to the drawing). This will ensure that the desired size of the motif can be identified.

Special productions are generally offered to all our customers if feasibility is given and our General Terms and Conditions are applied. Please note that the simple order of a design does not grant exclusive production of this design to the customer.

If detailed information on the possible tolerances is needed (e.g. cavity production for a metal part), please contact Swarovski who will place an application request within our application database.

**WARNING FOR CRYSTAL TATTOOS**

Crystal Tattoos may be applied on healthy skin only. Do not adhere to eyes or on mucous membranes. Crystal Tattoos are not recommended for young children. Loose crystals may present a small parts hazard to young children, particularly children under three years old. If a crystal comes loose, depending on the size of the crystal, children may choke on, inhale, swallow or insert the crystal into the nose.

