

Synthetics Hotfix

These versatile products open up a multitude of creative design possibilities through their numerous application techniques. They combine elegant crystals from Swarovski that can be applied using Hotfix technology with synthetic carrier materials. They are ideal for use in the textile, interior design, jewelry, and accessories segments.

Crystal Rocks and Crystal Fine Rocks are innovative and stunning design elements that showcase larger and smaller double-pointed chatons.

Crystal Fabric is another inventive product that consists of a carrier material that is completely covered with millions of tiny cut and uncut crystals.

Crystaltex is available in a wide range of colors, effects and a variety of carrier materials to make it the perfect choice for creating a full spectrum of designs.

Small XILION Chatons turn Crystaltex Chaton Bandings and Motifs into an exciting and luxurious statement in the fashion world.

APPLICATION EXAMPLES

Depending on the color and surface of the carrier material, Crystal Fabric with transparent film changes its look dramatically. Please find herein some examples.



Crystal Fabric on a black film creates a deep, mysteriously soft gleam, dressed up with a very alluring sparkle. Surfaces are rendered impenetrably by soft and inky colors that are embellished with shiny crystals.



13 Synthetics Hotfix

57 000	C	W	M	100%
Article number	Color of crystals	Width of the banding	Minimum order quantity in meters (M)	Documentation size in %

OVERVIEW OF AVAILABLE COLORS & EFFECTS

Crystal Aurore Boreale (001 AB)



010 Transparent

012 Black

Crystal Copper (001 COP)



010 Transparent

012 Black

Crystal Golden Shadow (001 GSHA)



010 Transparent

012 Black

Crystal Moonlight Blue (001 MOL)



010 Transparent

012 Black

Crystal Comet Argent Light (001 CAL)



010 Transparent

012 Black

Crystal Dorado (001 DOR)



010 Transparent

012 Black

Crystal Metallic Light Gold (001 MLGLD)



010 Transparent

012 Black

Jet HEM (280 HEM)



012 Black

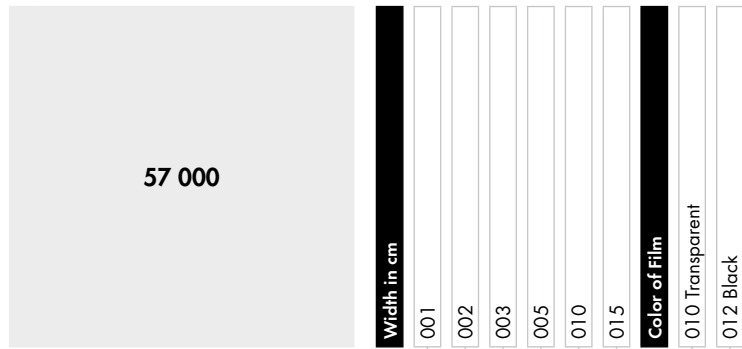
ORDERING EXAMPLE & PRODUCT VARIETY EXPLANATION

57 000	002	010	001 AB
Article number	3-digit code for width	Color of film	Color of crystals
	001 1 cm	010 Transparent	001 AB Crystal Aurore Boreale
	002 2 cm	012 Black	001 CAL Crystal Comet Argent Light
	003 3 cm		001 COP Crystal Copper
	005 5 cm		001 DOR Crystal Dorado
	010 10 cm		001 GSHA Crystal Golden Shadow
	015 15 cm		001 MLGD Crystal Metallic Light Gold
			001 MOL Crystal Moonlight Blue
			280 HEM Jet Hematite

57 000



W 001, 002, 003, 005, 010, 015
 M 10 M* 100%



Crystal Effects

Transparent Effects

- Crystal AB (001 AB)
- Crystal Copper (001 COP)
- Crystal Golden Shadow (001 GSHA)
- Crystal Moonlight Blue (001 MOL)

Metallic Effects

- Crystal Comet Argent Light (001 CAL)
- Crystal Dorado (001 DOR)
- Crystal Metallic Light Gold (001 MLGLD)

Color Effects

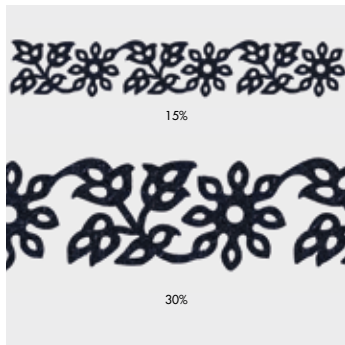
Metallic Effects

- Jet Hematite (280 HEM)

* Please note: Bandings can be divided.

ARTICLE EXPLANATION

57 196 S/S 2007 **03**



C	012-280HEM
S	~295x50
M	16 PCS

57 196	03	S	M	15%, 30%
Article number	This product is shown on flag number 3.	Motif size in mm	Minimum order quantity in pieces (PCS)	Documentation size in % 15%: total view of motif 30%: enlarged view of motif segment

ORDERING EXAMPLE & PRODUCT VARIETY EXPLANATION

57 196	012	280 HEM
Article number	Color of film	Color of crystals
	010 Transparent 012 Black	001 AB Crystal Aurore Boreale 001 CAL Crystal Comet Argent Light 001 COP Crystal Copper 001 DOR Crystal Dorado 001 GSHA Crystal Golden Shadow 001 MLGD Crystal Metallic Light Gold 001 MOL Crystal Moonlight Blue 280 HEM Jet Hematite

Please note: All motifs are available in certain color/film variations (see colormatrix p. 480).

Synthetics Hotfix

Crystal Fabric Motifs

Standard Collection



57 125



C	012-280HEM	
S	~252x240	
M	3 PCS	17%

57 127



C	012-280HEM	
S	~295x57	
M	15 PCS	15%

57 206



C	012-280HEM	
S	~159x197	
M	8 PCS	20%

57 217



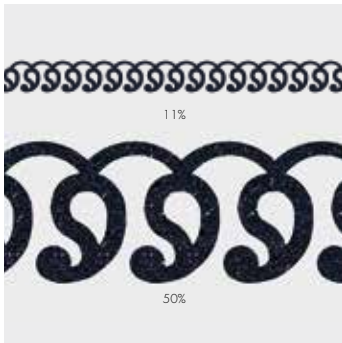
C	012-280HEM	
S	~108x139	
M	18 PCS	30%

57 219



C	012-280HEM	
S	~352x106	
M	7 PCS	12%

57 220



C	012-280HEM	
S	~399x36	
M	14 PCS	

57 305

03



C	012-001MIGLD	
S	~284x60	
M	13 PCS	15%

57 306

03



C	010-001GSHA	
S	~79x76	
M	44 PCS	50%

57 307

03



C	012-001DOR	
S	~83x82	
M	33 PCS	45%

57 308

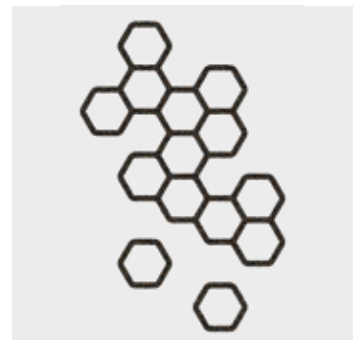
03



C	012-001DOR	
S	~233x46	
M	24 PCS	18%

57 309

04



C	012-001DOR	
S	~108x164	
M	16 PCS	25%

Please note: All motifs are available in certain color/film variations (see colormatrix p. 480).

Synthetics Hotfix

Crystal Fabric Motifs

Standard Collection

57 310 **04**



C 010-001GSHA	
S ~95x152	
M 20 PCS	25%

57 311 **04**



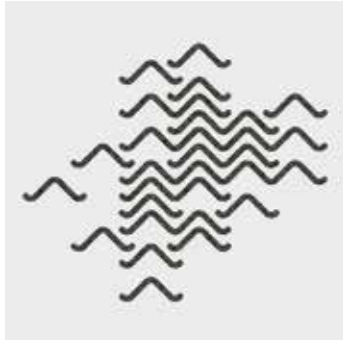
C 010-001GSHA	
S ~85x85	
M 33 PCS	45%

57 312 **04**



C 012-001DOR	
S ~85x85	
M 30 PCS	45%

57 313 **04**



C 012-001MLGLD	
S ~154x131	
M 16 PCS	26%

57 314 **04**



C 010-001GSHA	
S ~52x52	
M 75 PCS	75%

57 315 **04**



C 012-001MLGLD	
S ~62x59	
M 56 PCS	60%

57 316 **03**



C 012-001DOR	
S ~151x208	
M 8 PCS	20%

57 317 **04**



C 012-001DOR	
S ~146x154	
M 12 PCS	25%

57 318 **04**



C 012-001MLGLD	
S ~90x90	
M 27 PCS	35%

57 319 **04**



C 010-001GSHA	
S ~116x40	
M 42 PCS	35%

57 320 **04**



C 012-001DOR	
S ~160x40	
M 38 PCS	25%

57 321 **03**



C 012-001MLGLD	
S ~114x86	
M 24 PCS	35%

Please note: All motifs are available in certain color/film variations (see colormatrix p. 480).

Synthetics Hotfix

Crystal Fabric Motifs

Standard Collection

57 322 03



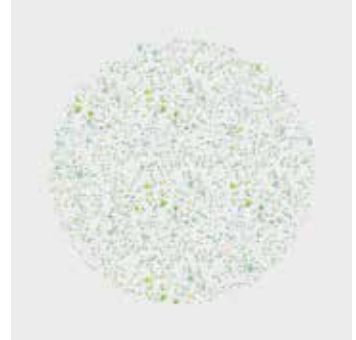
C	010-001GSHA
S	~160x105
M	18 PCS 25%

57 323 04



C	010-001GSHA
S	~293x203
M	4 PCS 15%

57 335 01



C	010-001AB
S	~35x35
M	147 PCS 100%

57 336 01



C	012-001MOL
S	~35x100
M	63 PCS 35%

57 337 01



C	012-001DOR
S	~83x86
M	30 PCS 40%

57 338 01



C	012-001MOL
S	~73x71
M	60 PCS 50%

57 339 01



C	012-001 CAL
S	~75x79
M	44 PCS 50%

57 340 01



C	012-001MIGLD
S	~133x132
M	14 PCS 30%

57 341 01



C	012-001MIGLD
S	~88x149
M	21 PCS 25%

57 342 01



C	012-001MOL
S	~92x109
M	30 PCS 35%

57 343 01



C	010-001AB
S	~52x49
M	102 PCS 80%

57 344 01



C	012-280HEM
S	~109x63
M	32 PCS 35%

Please note: All motifs are available in certain color/film variations (see colormatrix p. 480).

57 345

01



C	010-001GSHA
S	~110x110
M	16 PCS 35%

57 346

01



C	012-001DOR
S	~85x137
M	21 PCS 30%



57 195 S/S 2007 **03**

15%

50%

C	012-280HEM
S	~296x16
M	36 PCS

57 196 S/S 2007 **03**

15%

30%

C	012-280HEM
S	~295x50
M	16 PCS

57 198 S/S 2007 **03**

15%

C	012-280HEM
S	~295x83
M	10 PCS

57 283 S/S 2010 **08**

23%

C	010-001AB
S	~30x174
M	40 PCS

57 300 S/S 2011 **06**

27%

C	012-280HEM
S	~148x120
M	16 PCS

57 302 F/W 2011/12 **06**

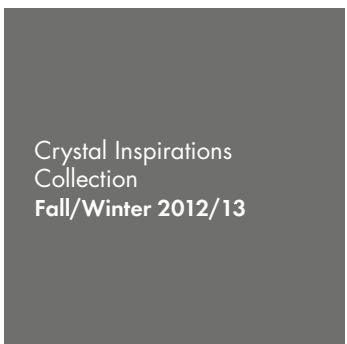
80%

C	010-001AB
S	~43x49
M	102 PCS

57 324 S/S 2012 **09**

38%

C	012-001MLGLD
S	~105x107
M	24 PCS



57 325 **09**

50%

C	012-280HEM
S	~80x79
M	33 PCS

57 326 **09**

65%

C	012-280HEM
S	~60x60
M	65 PCS

Please note: All motifs are available in certain color/film variations (see colormatrix p. 480).

57 327 09



C	012-280HEM
S	~51x51
M	96 PCS 80%

57 328 12



C	010-001AB
S	~158x180
M	12 PCS 23%

57 329 12



C	012-001DOR
S	~117x111
M	27 PCS 35%

57 332 09



C	012-280HEM
S	~188x72
M	16 PCS 23%



57 334 04



C	012-001DOR
S	~157x144
M	12 PCS 25%



57 347 11



C	010-001AB
S	~89x158
M	25 PCS 25%

Please note: All motifs are available in certain color/film variations (see colormatrix p. 480).



57 348 03



C	012-001COP	
E	~55x40	
M	95 PCS	70%

57 349 03



C	010-001COP	
E	~55x40	
M	95 PCS	70%



57 350 03



C	012-280HEM	
E	~51x108	
M	33 PCS	40%

A special motif is any individual design created by the customer, which is different from the Crystal Fabric Standard, Crystal Inspirations or Special Collections. This service opens up many customization possibilities and enables you to profit from Swarovski's longtime experience and design expertise. A range of customization options for existing motifs is available (see "Customization Possibilities" below). You may also submit sketches of a design that will suit your special needs – such as a brand image or an image to suit a particular sales campaign. This will then be made up according to your specifications using Computer Aided Design, which allows for easy adjustments according to your needs.

CUSTOMIZATION POSSIBILITIES FOR CRYSTAL FABRIC

- Max. motif size 620x1800 mm
- Min. motif size of 10x10 mm
- Min. width of holes within motifs: 3 mm
- Min. Crystal Fabric surface: 3 mm
- Min. size of the smallest element within a motif: 10x10 mm

ORDERING PROCESS

Send the request with a drawing you wish to order to your nearest Swarovski sales office. Make sure you include all measurements to the desired motif. Please also indicate which product group your special motif refers to (Crystal Fabric). You will then receive a quotation including your article number, minimum order quantity, price, and the line drawing of your special motif in PDF format. Please contact your Swarovski sales office again if any changes need to be made. Your special motif will be produced and delivered following your confirmation.

PLEASE NOTE

Please always submit your drawing of the desired motif to represent it in the actual size you require. A small sketch, when enlarged to the desired size, will have blurred lines that will make it difficult to correctly reinterpret. Pictures or drawings representing 100% size of the design or very good quality scans in JPG, BMP or DXF format will ensure that we have clear data to work with. These can also be sent via email or on a CD-ROM. If sending a sewing pattern, please include the whole pattern and not just cut outs. When the sketch is submitted as a hard copy by fax or e-mail, please include a scale legend (e.g. copy/scan with ruler next to the drawing). This will ensure that the desired size of the motif can be identified.

It is generally possible to draw motifs with a minimum gap of 3 mm between the outlines. However, due to the tolerance level of the crystals being applied onto carrier film, the final Crystal Fabric Motifs may generally differ from the sketches or prints in relation to the motifs' outline, especially with regards to spaces that are smaller than 3 mm. Therefore the motif, and by extension, the product itself, may be subject to individual variations with each reproduction. These variations are caused by technical production-related factors. As these variations are not deemed to be defects, warranty claims shall therefore not be entertained by Swarovski.

Special productions are generally offered to all our customers if feasibility is given and our General Terms and Conditions are applied. Please note that the simple order of a design does not grant exclusive production of this design to the customer.

If detailed information on the possible tolerances is needed (e.g. cavity production for a metal part), please contact Swarovski who will place an application request within our application database.

CRYSTAL ROCKS

The surface and the edges of the innovative and luxurious Crystal Rocks are smooth, which offers a whole new range of application possibilities. Crystal Rocks not only conjures up unique effects on accessories and jewelry, but also enhances textiles in an innovative way.

ARTICLE EXPLANATION

72 000 **01**



C	001 CAL
S	~1.04x98
M	12 PCS 35%

72 000	01	C	S	M	35 %
Article number	This motif is shown on flag number 1.	Color of crystal	Motif size in mm	Minimum order quantity in pieces (PCS)	Documentation size in %

ORDERING EXAMPLE & PRODUCT VARIETY EXPLANATION

72 000	010	001 CAL
Article number	Color of film	Color of crystals
	010 Transparent	001 AB Crystal Aurore Boreale
	012 Black	001 BBL Crystal Bermuda Blue
		001 CAL Crystal Comet Argent Light
		001 GSHA Crystal Golden Shadow
		001 METSI Crystal Metallic Silver
		001 MLGLD Crystal Metallic Light Gold
		001 REDM Crystal Red Magma
		001 SSHA Crystal Silver Shade
		280 Jet
		M 100
		M 101
		M 102
		M 103
		M 104
		M 106
		M 109 Peach Gold

Please note: Crystal Comet Argent Light (001 CAL) is not suitable for swimwear because the effect 001 CAL has a high level of sensitivity to seawater, sweat or chlorine water.

AVAILABLE BASE MATERIALS AND CRYSTAL COLORS & EFFECTS

72 000 onwards

Color of Film

010 Transparent
012 Black

Color

Plain Color

● Jet (280)

Crystal Effects

Transparent Effects

● Crystal Aurore Boreale (001 AB)

● Crystal Bermuda Blue (001 BBL)

● Crystal Golden Shadow (001 GSHA)

● Crystal Red Magma (001 REDM)

● Crystal Silver Shade (001 SSHA)

Metallic Effects

● Crystal Comet Argent Light (001 CAL)

● Crystal Metallic Light Gold (001 MLGLD)

● Crystal Metallic Silver (001 METSI)

72 000 onwards

Color of Film

010 Transparent
012 Black

Multicolors

● Jet & Crystal Metallic Silver (M100)

● Crystal Bermuda Blue & Crystal Metallic Light Gold (M101)

● Crystal Bermuda Blue & Crystal Comet Argent Light (M102)

● Crystal Metallic Light Gold & Crystal Golden Shadow (M103)

● Crystal Metallic Light Gold & Crystal Red Magma (M104)

● Jet & Crystal Comet Argent Light (M106)

Peach Gold (M109)

● Light Peach & Crystal Metallic Light Gold

OVERVIEW OF AVAILABLE COLORS & EFFECTS



Synthetics Hotfix

Crystal Rocks

Crystal Comet Argent Light (001 CAL)



010 Transparent

Crystal Metallic Light Gold (001 MLGLD)



010 Transparent

Crystal Metallic Silver (001 METSI)



010 Transparent

012 Black

Jet & Crystal Metallic Silver (M100)



012 Black

Crystal Bermuda Blue & Crystal Metallic Light Gold (M101)



012 Black

Crystal Bermuda Blue & Crystal Comet Argent Light (M102)



012 Black

Crystal Metallic Light Gold & Crystal Golden Shadow (M103)



010 Transparent

012 Black

Crystal Metallic Light Gold & Crystal Red Magma (M104)



010 Transparent

012 Black

Jet & Crystal Comet Argent Light (M106)



012 Black

Peach Gold (M109)



010 Transparent

012 Black

Synthetics Hotfix

Crystal Rocks

Standard Collection



72 000 01



C	001 GSHA		
S	~104x98		
M	12 PCS	40%	

72 001 01



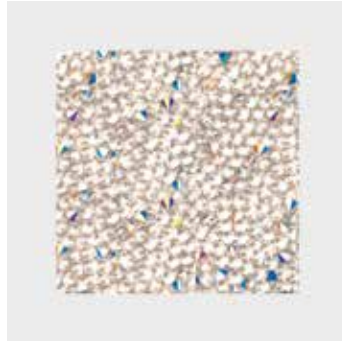
C	280		
S	~80x80		
M	12 PCS	45%	

72 002 01



C	001 REDM		
S	~76x80		
M	18 PCS	45%	

72 003 01



C	001 AB		
S	~40x40		
M	48 PCS	80%	

72 004 01



C	280		
S	~43x44		
M	42 PCS	80%	

72 005 01



C	280		
S	~174x48		
M	10 PCS	20%	

72 006 01



C	001 SSHA		
S	~108x138		
M	6 PCS	25%	

72 007 01



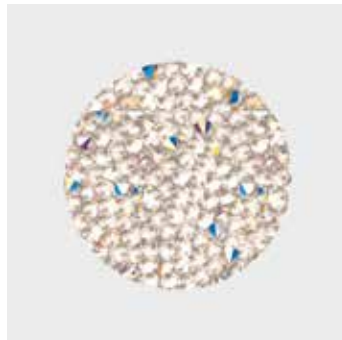
C	001 MLGLD		
S	~156x156		
M	6 PCS	25%	

72 009



C	012-280		
S	~35x45		
M	54 PCS	80%	

72 010



C	001 AB		
S	~30x30		
M	80 PCS	100%	

72 018



C	001 BBL		
S	~158x179		
M	4 PCS	20%	

Please note: All motifs are available in certain color/film variations (see colormatrix p. 491).

Synthetics Hotfix

Crystal Rocks

Standard Collection

72 020



C	280	
S	~40x40	
M	54 PCS	100%

72 021

02



C	010-001GSHA	
S	~50x50	
M	30 PCS	80%

72 022

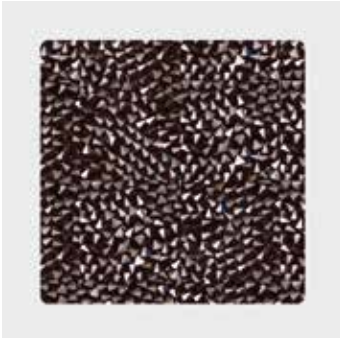
02



C	012-001SSHA	
S	~51x44	
M	54 PCS	70%

72 023

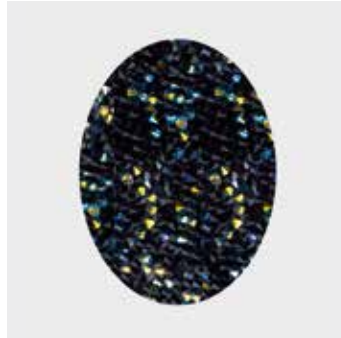
02



C	012-280	
S	~44x43	
M	42 PCS	80%

72 024

02



C	012-001AB	
S	~37x50	
M	49 PCS	70%

72 025

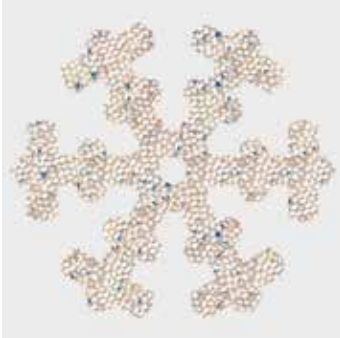
02



C	010-001SSHA	
S	~169x65	
M	8 PCS	25%

72 026

02



C	010-001AB	
S	~107x98	
M	9 PCS	40%

72 027

02



C	012-001BBL	
S	~131x132	
M	8 PCS	30%

72 028

02



C	010-001REDM	
S	~50x41	
M	42 PCS	80%

72 029

02



C	012-001REDM	
S	~140x153	
M	4 PCS	25%

72 030

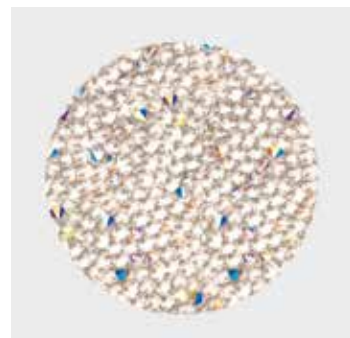
02



C	010-001MLGLD	
S	~124x129	
M	6 PCS	30%

72 031

02



C	010-001AB	
S	~40x40	
M	48 PCS	90%

Please note: All motifs are available in certain color/film variations (see colormatrix p. 491).

Synthetics Hotfix

Crystal Rocks

Standard Collection

72 032 Innovation Box



SS	010-001AB	
S	~30x30	
M	80 PCS	100%

Synthetics Hotfix

Crystal Rocks

Crystal Inspirations Collections

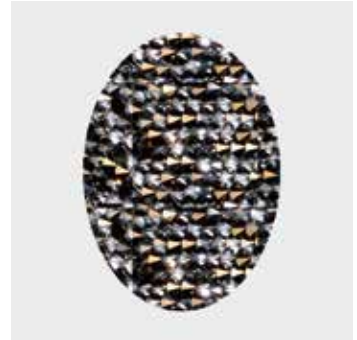


72 008 S/S 2011 **10**



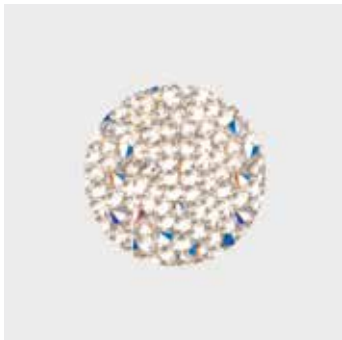
C	001MLGLD	
S	~58x58	
M	42 PCS	70%

72 011 S/S 2011 **06**



C	001MLGLD	
S	~26x37	
M	81 PCS	100%

72 013 S/S 2011 **14**



C	001AB	
S	~24x24	
M	120 PCS	100%

72 014 F/W 2011/12 **07**



C	001 SSHA	
S	~23x40	
M	110 PCS	100%

72 015 F/W 2011/12 **09**



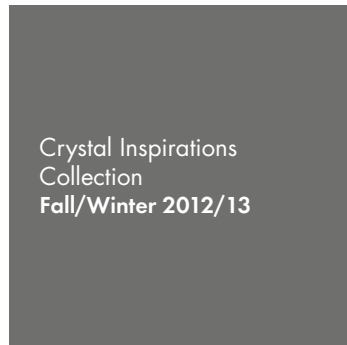
C	001 GSHA	
S	~60x20	
M	75 PCS	60%

Please note: All motifs are available in certain color/film variations (see colormatrix p. 491).

72 016 S/S 2012 12



C	001 GSHA	
S	~60x60	
M	20 PCS	60%



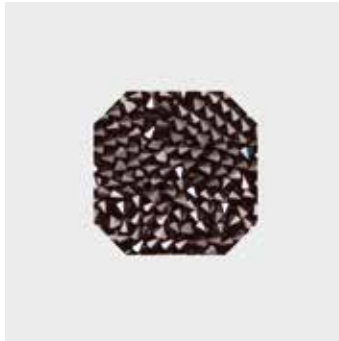
72 017 06



C	001 MLGLD	
S	~102x102	
M	9 PCS	40%



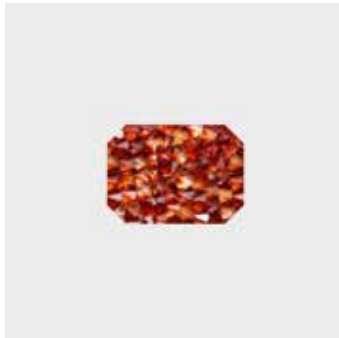
72 012 05



C	012-280	
S	~22x22	
M	143 PCS	100%



72 033 09



C	010-001REDM	
S	~18x13	
M	204 PCS	100%

Please note: All motifs are available in certain color/film variations (see colormatrix p. 491).

A special motif is a design created by the customer, which is different from the Crystal Rocks Standard Collection. This service opens up many customization possibilities and enables you to profit from Swarovski's longtime experience and design expertise. A range of customization options for existing motifs is available (see "Customization Possibilities" below). You may also submit sketches of a design that will suit your special needs – such as a brand image or an image to suit a particular sales campaign. This will then be made up according to your specifications using Computer Aided Design, which allows for easy adjustments according to your needs.

CUSTOMIZATION POSSIBILITIES FOR CRYSTAL ROCKS

- Min. size: 15x15 mm or effective surface of 2.25 cm²
- Max. size: 400x330 mm
- Min. Crystal Rocks surface: 9 mm
- Min. width of holes within motifs: 3 mm
- Min. size of the smallest element within a motif: 15x15 mm or effective surface of 2.25 cm²

Due to production issues, motifs with edges and angles of less than 90° need to be rounded off. Tolerance value = 3 mm.

ORDERING PROCESS

Send the request with a drawing you wish to order to your nearest Swarovski sales office. Make sure you include all measurements to the desired motif. Please also indicate which product group your special motif refers to (Crystal Rocks). You will then receive a quotation including your article number, minimum order quantity, price, and the line drawing of your special motif in PDF format. Please contact your Swarovski sales office again if any changes need to be made. Your special motif will be produced and delivered following your confirmation.

PLEASE NOTE

Please always submit your drawing of the desired motif to represent it in the actual size you require. A small sketch, when enlarged to the desired size, will have blurred lines that will make it difficult to correctly reinterpret. Pictures or drawings representing 100% size of the design or very good quality scans in JPG, BMP or DXF format will ensure that we have clear data to work with. These can also be sent via email or on a CD-ROM. If sending a sewing pattern, please include the whole pattern and not just cut outs. When the sketch is submitted as a hard copy by fax or e-mail, please include a scale legend (e.g. copy/scan with ruler next to the drawing). This will ensure that the desired size of the motif can be identified.

It is generally possible to draw motifs with a minimum gap of 10 mm between the outlines. However, due to the tolerance level of the crystals being applied onto carrier film, the final Crystal Rocks Motifs may generally differ from the sketches or prints in relation to the motifs' outline, especially with regards to spaces that are smaller than 10 mm. Therefore the motif, and by extension, the product itself, may be subject to individual variations with each reproduction. These variations are caused by technical production-related factors. As these variations are not deemed to be defects, warranty claims shall therefore not be entertained by Swarovski.

Special productions are generally offered to all our customers if feasibility is given and our General Terms and Conditions are applied. Please note that the simple order of a design does not grant exclusive production of this design to the customer.

If detailed information on the possible tolerances is needed (e.g. cavity production for a metal part), please contact Swarovski who will place an application request within our application database.

CRYSTAL FINE ROCKS

Fans of filigree design will love Crystal Fine Rocks. Small double pointed Chatons create a refined surface structure and a flexible texture that is thin and lightweight. Available in a wide selection, the washable Crystal Fine Rocks is set to become the star design element for all segments.

ARTICLE EXPLANATION

74 000 01



C	012-280
S	~97x100
M	9 PCS 40%

74 000	01	C	S	M	40 %
Article number	This motif is shown on flag number 1.	Color of crystal	Motif size in mm	Minimum order quantity in pieces (PCS)	Documentation size in %

ORDERING EXAMPLE & PRODUCT VARIETY EXPLANATION

74 000	010	001 GSHA
Article number	Color of film	Color of crystals
	010 Transparent 012 Black	001 AB Crystal Aurore Boreale 001 BBL Crystal Bermuda Blue 001 CAL Crystal Comet Argent Light 001 GSHA Crystal Golden Shadow 001 METSI Crystal Metallic Silver 001 MLGLD Crystal Metallic Light Gold 001 REDM Crystal Red Magma 001 SSHA Crystal Silver Shade 280 Jet M 100 M 101 M 102 M 103 M 104 M 106 M 109 Peach Gold

Please note: Crystal Comet Argent Light (001 CAL) is not suitable for swimwear because the effect 001 CAL has a high level of sensitivity to seawater, sweat or chlorine water.

AVAILABLE BASE MATERIALS AND CRYSTAL COLORS & EFFECTS

74 000 onwards

Color of Film
 010 Transparent
 012 Black

Color

Plain Color
 Jet (280)

Crystal Effects

Transparent Effects
 Crystal Aurore Boreale (001 AB)
 Crystal Bermuda Blue (001 BBL)
 Crystal Golden Shadow (001 GSHA)
 Crystal Red Magma (001 REDM)
 Crystal Silver Shade (001 SSHA)

Metallic Effects
 Crystal Comet Argent Light (001 CAL)
 Crystal Metallic Light Gold (001 MLGLD)
 Crystal Metallic Silver (001 METSI)

74 000 onwards

Color of Film
 010 Transparent
 012 Black

Multicolors
 Jet & Crystal Metallic Silver (M100)
 Crystal Bermuda Blue & Crystal Metallic Light Gold (M101)
 Crystal Bermuda Blue & Crystal Comet Argent Light (M102)
 Crystal Metallic Light Gold & Crystal Golden Shadow (M103)
 Crystal Metallic Light Gold & Crystal Red Magma (M104)
 Jet & Crystal Comet Argent Light (M106)
 Peach Gold (M109)
 Light Peach & Crystal Metallic Light Gold

OVERVIEW OF AVAILABLE COLORS & EFFECTS



Synthetic Hotfix

Crystal Fine Rocks

Crystal Comet Argent Light (001 CAL)



010 Transparent

Crystal Metallic Light Gold (001 MLGLD)



010 Transparent

Crystal Metallic Silver (001 METSI)



010 Transparent

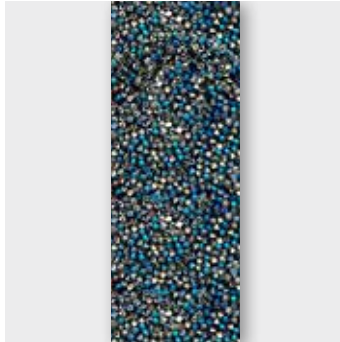
012 Black

Jet & Crystal Metallic Silver (M100)



012 Black

Crystal Bermuda Blue & Crystal Metallic Light Gold (M101)



012 Black

Crystal Bermuda Blue & Crystal Comet Argent Light (M102)



012 Black

Crystal Metallic Light Gold & Crystal Golden Shadow (M103)



010 Transparent

012 Black

Crystal Metallic Light Gold & Crystal Red Magma (M104)



010 Transparent

012 Black

Jet & Crystal Comet Argent Light (M106)



012 Black

Peach Gold (M109)



010 Transparent

012 Black

Synthetics Hotfix

Crystal Fine Rocks

Standard Collection



74 000 01



C	012-280		
S	~97x100		
M	9 PCS		40%

74 001 01



C	012-001SSHA		
S	~130x130		
M	6 PCS		30%

74 002 01



C	010-001CAL		
S	~92x121		
M	12 PCS		30%

74 003 01/Innovation Box



C	010-001GSHA		
S	~24x24		
M	120 PCS		100%

74 004



C	010-001AB		
S	~68x68		
M	20 PCS		60%

74 005



C	010-001REDM		
S	~66x66		
M	20 PCS		60%

74 006



C	010-001MLGLD		
S	~115x114		
M	9 PCS		35%

74 007



C	010-001GSHA		
S	~65x92		
M	20 PCS		40%

74 008 01



C	010-001MLGLD		
S	~52x54		
M	35 PCS		70%

74 009 01



C	010-001SSHA		
S	~65x28		
M	64 PCS		60%

74 010 01



C	010-001GSHA		
S	~31x78		
M	48 PCS		50%

Please note: All motifs are available in certain color/film variations (see colormatrix p. 499).

Synthetics Hotfix

Crystal Fine Rocks

Standard Collection

74 011 01



C	010-001AB
S	~23x22
M	154 PCS
	100%

74 012 01



C	010-001REDM
S	~40x33
M	64 PCS
	90%

74 013 01



C	012-001BBL
S	~90x57
M	22 PCS
	45%

74 014



C	012-001AB
S	~134x38
M	18 PCS
	30%

74 015 01

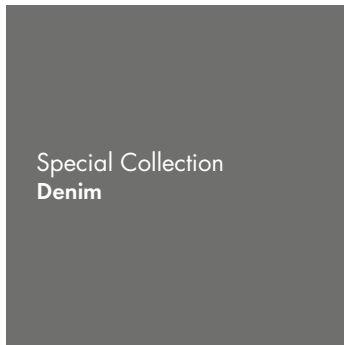


C	012-001REDM
S	~112x104
M	9 PCS
	35%

74 023 Innovation Box



C	010-001AB
S	~27x19
M	204 PCS
	100%



74 016

03



C	010-001MLGLD	
S	~195x12	
M	32 PCS	100%



74 018

07



C	012-280	
S	~134x69	
M	18 PCS	30%



Crystal Inspirations
Collection
Fall/Winter 2014/15

74 017 07



C	010-001MLGLD
S	~195x12
M	32 PCS 22%

74 019 10



C	010-001MLGLD
S	~195x12
M	32 PCS 25%

74 020 09



C	010-001MLGLD
S	~104x48
M	21 PCS 40%

74 021 03



C	010-001METSJ
S	~55x40
M	40 PCS 70%

74 022 03



C	012-M100
S	~55x40
M	40 PCS 70%

A special motif is a design created by the customer, which is different from the Crystal Fine Rocks Standard Collection. This service opens up many customization possibilities and enables you to profit from Swarovski's longtime experience and design expertise. A range of customization options for existing motifs is available (see "Customization Possibilities" below). You may also submit sketches of a design that will suit your special needs, such as a brand image or an image to suit a particular sales campaign. This will then be made up according to your specifications using Computer Aided Design, which allows for easy adjustments according to your needs.

CUSTOMIZATION POSSIBILITIES FOR CRYSTAL FINE ROCKS

- Min. size: 15x15 mm or effective surface of 2.25 cm²
- Max. size: 400x330 mm
- Min. Crystal Fine Rocks surface: 4 mm
- Min. width of holes within motifs: 3 mm
- Min. size of the smallest element within a motif: 15x15 mm or effective surface of 2.25 cm²

ORDERING PROCESS

Please send a request with the drawing you wish to order to your nearest Swarovski sales office. Make sure you include all measurements of the desired motif. Please also indicate which product group your special motif refers to (Crystal Fine Rocks). You will then receive a quotation including your article number, minimum order quantity, price, and the line drawing of your special motif in PDF format. Please contact your Swarovski sales office again if any changes need to be made. Your special motif will be produced and delivered following your confirmation.

PLEASE NOTE

Please always submit your drawing of the desired motif to represent it in the actual size you require. A small sketch, when enlarged to the desired size, will have blurred lines which will make it difficult to correctly reinterpret. Pictures or drawings representing 100% size of the design or very good quality scans in JPG, BMP or DXF format ensure that we have clear data to work with. These can also be submitted as a hard copy by fax or e-mail. Please include a scale (e.g. copy/scan with ruler next to the drawing). This will ensure that the desired size of the motif can be correctly identified. Generally, it is possible to draw motifs with a minimum gap of 10 mm between the outlines. However, due to the tolerance level of the crystals being applied onto carrier film, the final Crystal Fine Rocks Motifs may differ from the sketches or prints in relation to the motifs' outline, especially with regards to spaces that are smaller than 10 mm. Therefore, the motif, and by extension, the product itself, may be subject to individual variations with each reproduction. These variations are caused by technical production-related factors. As these variations are not deemed to be defects, Swarovski is not in a position to entertain any subsequent warranty claims.

Special productions are generally offered to all our customers if feasibility is given and our General Terms and Conditions are applied. Please note that the simple order of a design does not grant exclusive production of this design to the customer.

If detailed information on the possible tolerances is needed (e.g. cavity production for a metal part), please contact Swarovski who will place an application request within our application database.

ARTICLE EXPLANATION

62 000



R	001-012; 057
SS	SS 6 (2038)
M	10 M* 100%

62 000	R	SS	M	100%
Article number	This article is available in 1-12 and 57 rows.	Stone size	Minimum order quantity in meters (M)	Documentation size in %

ORDERING EXAMPLE & PRODUCT VARIETY EXPLANATION

62 000	010	F080	001	NOHF
Article number	3-digit code for number of rows	Type and color of base material	Color of crystals	Hotfix Technology
		F Fabric S Synthetic	Please see the respective product matrix for all available code references.	HF With Hotfix glue NOHF Without Hotfix glue**
		010 Transparent 012 Black 080 Antique Gold 081 Gold 082 Silver 083 Antique Silver		

* Please note: Bandings can be divided.

** All Crystaltex articles are available as Hotfix or No Hotfix version, except versions S010 Synthetic Transparent and S012 Synthetic Black (both only as Hotfix).

AVAILABLE BASE MATERIAL & STONE CONFIGURATIONS

Crystaltex Bandings are available in six different base materials. Please see the respective product matrix for all available options.



F082 Fabric Silver



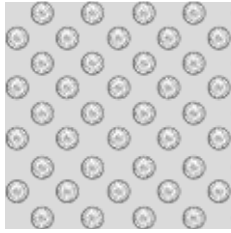
F083 Fabric Antique Silver



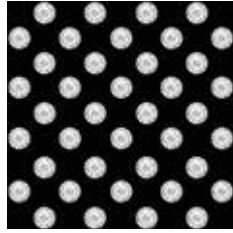
F081 Fabric Gold



F080 Fabric Antique Gold

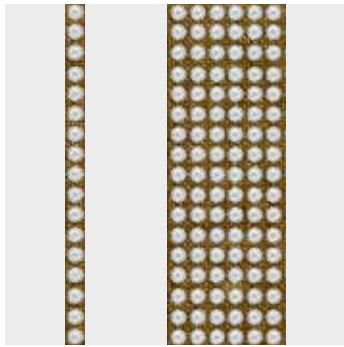


S010 Synthetic Transparent



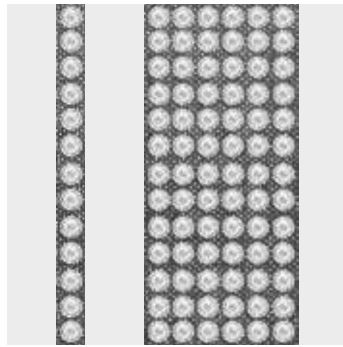
S012 Synthetic Black

62 000



R	001-012; 057
SS	SS 6 (2038)
M	10 M* 100%

62 010



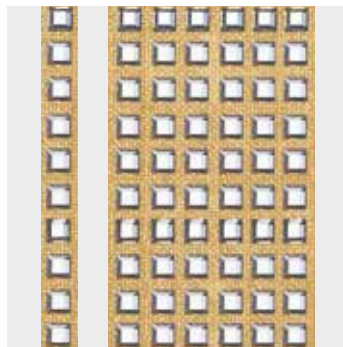
R	001-012; 022; 044
SS	SS 10 (2038)
M	10 M* 100%

62 011



R	001-07; 044
SS	SS 10 (2038)
M	10 M* 100%

62 020



R	001-006; 033
SS	3 mm (2400)
M	10 M* 100%

* Please note: Bandings can be divided.

	Stone Size			Base Material					
	SS 6	SS 10	3 mm	F080 Fabric Antique Gold	F081 Fabric Gold	F082 Fabric Silver	F083 Fabric Antique Silver	S010 Synthetic Transparent*	S012 Synthetic Black*
<div style="background-color: #cccccc; padding: 10px; display: flex; justify-content: space-between;"> 62 000* 62 010* 62 011* 62 020* </div>									
Crystal									
Crystal F (001)	■	■	■	■	■	■	■	■	■
Colors									
Plain Colors									
Amethyst F (204)	■	■		■	■	■	■	■	■
Aquamarine F (202)	■	■		■	■	■	■	■	■
Black Diamond F (215)	■	■		■	■	■	■	■	■
Fuchsia F (502)	■	■		■	■	■	■	■	■
Jet F (280)	■	■	■	■	■	■	■	■	■
Light Rose F (223)	■	■		■	■	■	■	■	■
Light Siam F (227)	■	■		■	■	■	■	■	■
Peridot F (214)	■	■		■	■	■	■	■	■
Sapphire F (206)	■	■		■	■	■	■	■	■
Silk F (391)	■	■		■	■	■	■	■	■
Smoked Topaz F (220)	■	■		■	■	■	■	■	■
Crystal Effects									
Transparent Effects									
Crystal AB F (001 AB)	■	■	■	■	■	■	■	■	■
Crystal Golden Shadow F (001 GSHA)	■	■		■	■	■	■	■	■
Crystal Luminous Green F (001 LUMG)	■	■		■	■	■	■	■	■
Crystal Silver Shade F (001 SSHA)	■	■		■	■	■	■	■	■
Metallic Effects									
Crystal Dorado F (001 DOR)	■	■		■	■	■	■	■	■
Crystal Iridescent Green F (001 IRIG)	■	■		■	■	■	■	■	■
Crystal Rose Gold F (001 ROGL)	■	■		■	■	■	■	■	■
Color Effects									
Metallic Effects									
Jet Hematite F (280 HEM)	■	■	■	■	■	■	■	■	■

13 Synthetics Hotfix

* All Crystaltex articles are available as Hotfix or No Hotfix version, except versions S010 Synthetic Transparent and S012 Synthetic Black (both only as Hotfix).

ARTICLE EXPLANATION

66 043 F/W 2010/11 12



C	S010-001SSHA/001/215
E	S6/S6/S6
S	~39x10
M	32.810 M (840 PCS) 100%

66 043	12	C	E	S	M	100%
Article Number	This motif is shown on flag number 12.	Color assortment Color of base material (S010) is separated from crystal colors with a hyphen. Color code 1 (001 SSHA) corresponds with element 1; color code 2 (001) corresponds with element 2 etc.	Elements Crystaltex Bandings Motifs are available in stone sizes SS 6 and SS 10 in close stone setting.	Motif size in mm	Minimum Order Quantity in meters (M); pieces (PCS)	Documentation size in %

ORDERING EXAMPLE & PRODUCT VARIETY EXPLANATION

66 043	S010	001 SSHA	001	215	HF
Article Number	Type and color of base material	Crystal color corresponding to element 1; color of most frequently used element in the motif	Crystal color corresponding to element 2; color of second most frequently used element in the motif	Crystal color corresponding to element 3; color of third most frequently used element in the motif	Hotfix Technology HF Hotfix NOHF No Hotfix
	F Fabric S Synthetic				
	010 Transparent 012 Black 080 Antique Gold 081 Gold 082 Silver 083 Antique Silver	Please see the respective product matrix for all available code references.			

The Minimum Order Quantity (MOQ) for Standard Motifs is 1 packing unit (approx. 5 meters). Samples can be ordered below 1 packing unit. If the Standard Motifs are modified (color changes), please refer to the detailed MOQ information at the end of this chapter. This product must be ordered in meters.

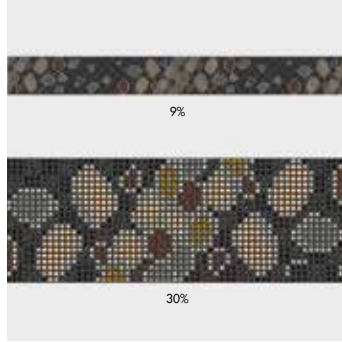
66 000* to 66 043*		Stone Size	SS 6	SS 10	Base Material	F080 Fabric Antique Gold	F081 Fabric Gold	F082 Fabric Silver	F083 Fabric Antique Silver	S010 Synthetic Transparent *	S012 Synthetic Black *
Crystal											
Crystal F (001)			■	■		■	■	■	■	■	■
Colors											
Plain Colors											
Amethyst F (204)			■	■		■	■	■	■	■	■
Aquamarine F (202)			■	■		■	■	■	■	■	■
Black Diamond F (215)			■	■		■	■	■	■	■	■
Fuchsia F (502)			■	■		■	■	■	■	■	■
Jet F (280)			■	■		■	■	■	■	■	■
Light Rose F (223)			■	■		■	■	■	■	■	■
Light Siam F (227)			■	■		■	■	■	■	■	■
Peridot F (214)			■	■		■	■	■	■	■	■
Sapphire F (206)			■	■		■	■	■	■	■	■
Silk F (391)			■	■		■	■	■	■	■	■
Smoked Topaz F (220)			■	■		■	■	■	■	■	■
Crystal Effects											
Transparent Effects											
Crystal AB F (001 AB)			■	■		■	■	■	■	■	■
Crystal Golden Shadow F (001 GSHA)			■	■		■	■	■	■	■	■
Crystal Luminous Green F (001 LUMG)			■	■		■	■	■	■	■	■
Crystal Silver Shade F (001 SSHA)			■	■		■	■	■	■	■	■
Metallic Effects											
Crystal Dorado F (001 DOR)			■	■		■	■	■	■	■	■
Crystal Iridescent Green F (001 IRIG)			■	■		■	■	■	■	■	■
Crystal Rose Gold F (001 ROGL)			■	■		■	■	■	■	■	■
Color Effects											
Metallic Effects											
Jet Hematite F (280 HEM)			■	■		■	■	■	■	■	■

13 Synthetics Hotfix

* All Crystaltext articles are available as Hotfix or No Hotfix version, except versions S010 Synthetic Transparent and S012 Synthetic Black (both only as Hotfix).

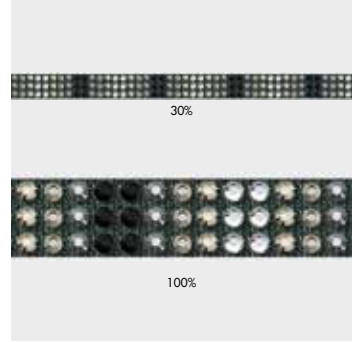


66 001 **02**



C	I012-280HEM/280/001SSHA/ 001GSHA/220/215/001DOR
E	S6/S6/S6/S6/S6/S6
S	~250X55
M	5 M (20 PCS)

66 003 **02**

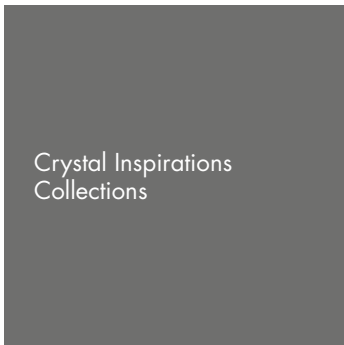


C	F083-001/001SSHA/215/280HEM/280
E	S10CT/S10CT/S10CT/S10CT/S10CT
S	~477x10
M	4.773 M (10 PCS)

66 014 **02**



C	F083-001/001SSHA/215/280HEM/280
E	S10CT/S10CT/S10CT/S10CT/S10CT
S	~68x10
M	4.773 M (70 PCS) 60%



66 043 F/W 2010/11 **12**



C	S010-001SSHA/001/215
E	S6/S6/S6
S	~39x10
M	32.810 M (840 PCS) 100%

PRODUCT DETAILS

Article Number	Standard Motifs (as shown)				Modified Standard Motifs (change of color)			
	Packing Unit = MOQ		MOQ for Samples		MOQ		MOQ for Samples	
	in meters	in pieces	in meters	in pieces	in meters	in pieces	in meters	in pieces
66 001	5.000	20	0.250	1	5.000	20	0.500	2
66 003	4.773	10	0.477	1	33.408	70	6.682	14
66 014	4.773	70	0.068	1	33.408	490	2.864	42
66 043	4.687	120	0.039	1	32.810	840	3.281	84

The MOQ for Standard Motifs is 1 packing unit (approx. 5 meters). Samples can be ordered below 1 packing unit. If the Standard Motifs are modified (color changes) please refer to the detailed MOQ information in the table above. This product must be ordered in meters. All Standard Crystaltex Bandings Motifs are also available as it-version.

ARTICLE EXPLANATION

The extended assortment of colors can be combined with six different base materials and opens up a multitude of options for individual designs. Up to eight different colors can be incorporated in a motif. All Crystaltex Motifs are also available as it-version.

65 322

03



C	S012-001IRIG/001AB/202
E	S6/S6/S6
S	~57x49
M	18PCS
	70%

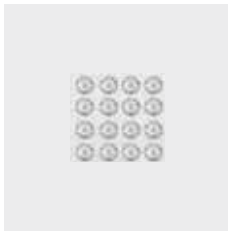
65 322	03	C	E	S	M	70%
Article number	This product is shown on flag number 3.	Color assortment	Elements	Motif size in mm	Minimum order quantity in pieces (PCS)	Documentation size in %
		Color of base material (S012) is seperated from crystal colors with a hyphen. Color code 1 (001IRIG) corresponds with element 1; color code 2 (001AB) corresponds with element 2 etc.	Crystaltex Motifs are available in stone sizes SS 6 and SS 10.			

ORDERING EXAMPLE & PRODUCT VARIETY EXPLANATION

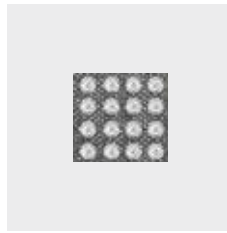
65 322	S012	001IRIG	001AB	202
Article number	Type and color of base material	Crystal color corresponding to element 1; color of most frequently used element in the motif	Crystal color corresponding to element 2; color of second most frequently used element in the motif	Crystal color corresponding to element 3; color of third most frequently used element in the motif
	F Fabric S Synthetic			
	010 Transparent 012 Black 080 Antique Gold 081 Gold 082 Silver 083 Antique Silver	Please see the respective product matrix for all available code references.		

AVAILABLE BASE MATERIAL COLORS

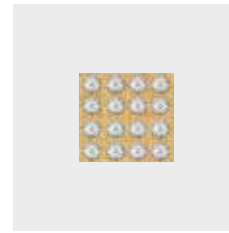
Crystaltex Motifs are available in four different fabric and two different synthetic base material colors. Please see the respective product matrix for all available options.



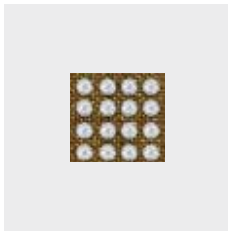
F082 Fabric Silver



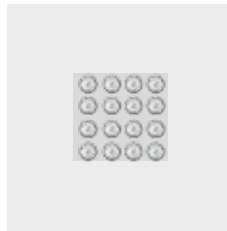
F083 Fabric Antique Silver



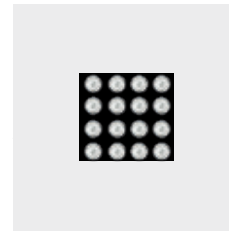
F081 Fabric Gold



F080 Fabric Antique Gold







S010 Synthetic Transparent



S012 Synthetic Black

Crystaltex Motifs 65 000 onwards		Stone Size	SS 6	SS 10	Base Material	F080 Fabric Antique Gold	F081 Fabric Gold	F082 Fabric Silver	F083 Fabric Antique Silver	S010 Synthetic Transparent	S012 Synthetic Black
Crystal											
Crystal F (001)											
Colors											
Plain Colors											
Amethyst F (204)											
Aquamarine F (202)											
Black Diamond F (215)											
Fuchsia F (502)											
Jet F (280)											
Light Rose F (223)											
Light Siam F (227)											
Peridot F (214)											
Sapphire F (206)											
Silk F (391)											
Smoked Topaz F (220)											
Crystal Effects											
Transparent Effects											
Crystal AB F (001 AB)											
Crystal Golden Shadow F (001 GSHA)											
Crystal Luminous Green F (001 LUMG)											
Crystal Silver Shade F (001 SSHA)											

Crystaltex Motifs 65 000 onwards		Stone Size	SS 6	SS 10	Base Material	F080 Fabric Antique Gold	F081 Fabric Gold	F082 Fabric Silver	F083 Fabric Antique Silver	S010 Synthetic Transparent	S012 Synthetic Black
Metallic Effects											
	Crystal Dorado F (001 DOR)		■	■	■	■	■	■	■	■	■
	Crystal Iridescent Green F (001 IRIG)		■	■	■	■	■	■	■	■	■
	Crystal Rose Gold F (001 ROGL)		■	■	■	■	■	■	■	■	■
Color Effects											
Metallic Effects											
	Jet Hematite F (280 HEM)		■	■	■	■	■	■	■	■	■

Synthetics Hotfix

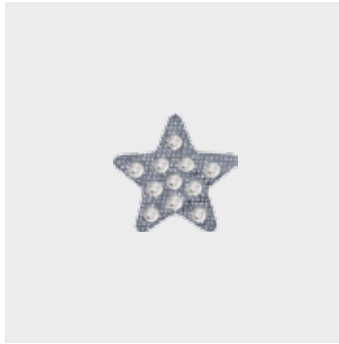
Crystaltex Motifs

Standard Collection



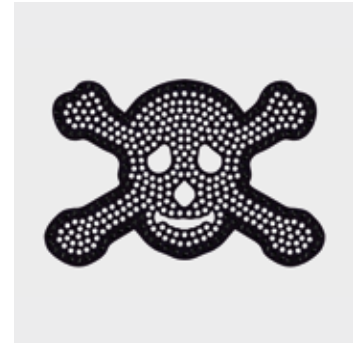
Standard Collection

65 011



C	F083-001
SS	SS 6
S	~ Ø 17
M	100 PCS
	100%

65 291



C	S012-001/280
E	S6/S6
S	~93x62
M	6 PCS
	40%

65 295



C	F083-001DOR/391/001AB
E	S6/S6/S6
S	~81x84
M	6 PCS
	50%

65 316



C	S010-204
E	S6
S	~78x28
M	24 PCS
	50%

03

65 317



C	S012-001SSHA/001/215
E	S6/S6/S6
S	~49x102
M	15 PCS
	35%

03

65 318



C	S010-223/001
E	S6/S6
S	~71x34
M	21 PCS
	60%

03

65 319



C	S012-001/001AB
E	S6/S6
S	~51x56
M	18 PCS
	60%

03

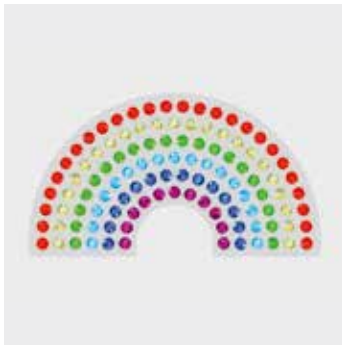
65 320



C	S010-227
E	S6
S	~70x22
M	24 PCS
	60%

03

65 321



C	S010-227/001LUMG/214/202/206/502
E	S10/S10/S10/S10/S10/S10
S	~64x36
M	18 PCS
	60%

03

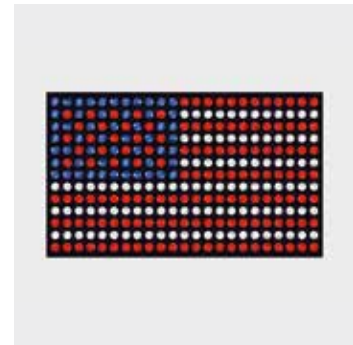
65 322



C	S012-001IRIG/001AB/202
E	S6/S6/S6
S	~57x49
M	18PCS
	70%

03

65 323



C	S012-227/001/206
E	S6/S6/S6
S	~61x36
M	18 PCS
	60%

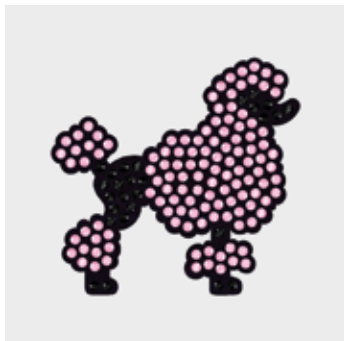
03

Synthetics Hotfix

Crystaltex Motifs

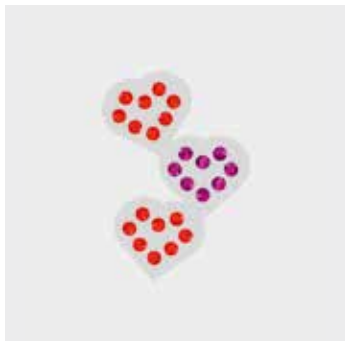
Standard Collection

65 324 03



C	S012-223/280
E	S6/S6
S	~47x45
M	18 PCS
	70%

65 325 03



C	S010-227/502
E	S6/S6
S	~20x28
M	90 PCS
	100%

65 326 03



C	F081-001
E	S6
S	~39x17
M	54 PCS
	100%

65 327 03



C	F081-001ROGL/001DOR
E	S6/S6
S	~34x43
M	36 PCS
	100%

65 328 03



C	S012-001AB
E	S10
S	~44x31
M	36 PCS
	80%

65 329 03



C	S012-280
E	S6
S	~18x39
M	72 PCS
	100%

65 330 03



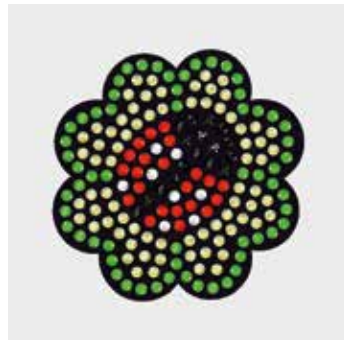
C	S010-223/391
E	S6/S6
S	~31x42
M	36 PCS
	100%

65 331 03



C	F081-001DOR
E	S6
S	~19x50
M	54 PCS
	80%

65 332 03



C	S012-001LUMG/214/227/280/001/ 280HEM
E	S6/S6/S6/S6/S6
S	~42x42
M	24 PCS
	80%

65 333 03



C	S010-001GSHA/223/391/001LUMG
E	S6/S6/S6/S6
S	~29x46
M	36 PCS
	80%

65 334 03



C	S010-001/001GSHA/001DOR/214
E	S6/S6/S6/S6
S	~34x46
M	33 PCS
	80%

65 335 03



C	S012-001ROGL/001DOR/391/001AB
E	S6/S6/S6/S6
S	~84x84
M	9 PCS
	50%

Synthetics Hotfix

65 336

03



C	S012-001/280HEM
E	S10/S10
S	~115x24
M	18 PCS
	35%

Crystaltex Motifs

65 337

03



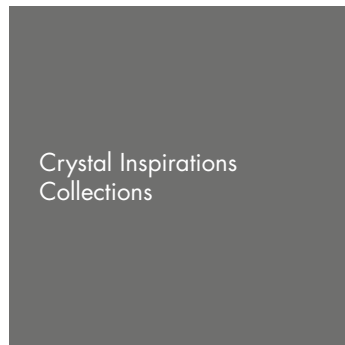
C	S010-001AB
E	S10
S	~68x60
M	12 PCS
	60%

Standard Collection

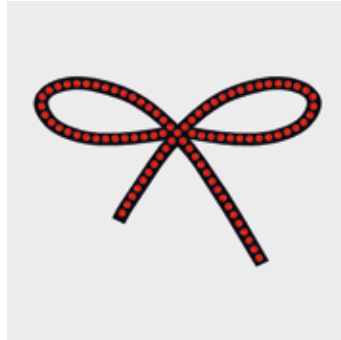
Synthetics Hotfix

Crystaltex Motifs

Crystal Inspirations Collection

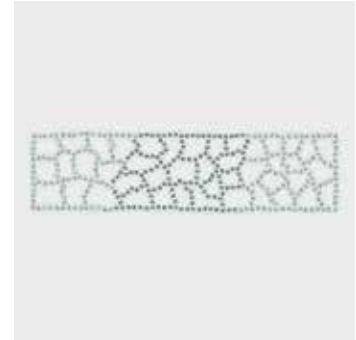


65 282 F/W 2010/11 04



C	S012-227
E	S6
S	~76x50
M	12 PCS
	50%

65 307 S/S 2012 06

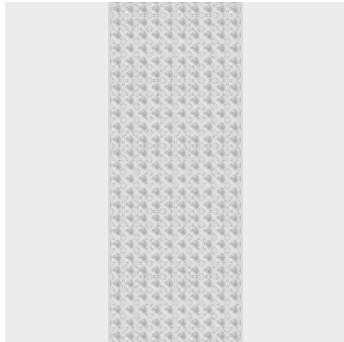


C	F082-001SSHA/215
E	S6/S6
S	~142x39
M	9 PCS
	29%

ARTICLE EXPLANATION

Small XILLION Chatons turn this product into an exciting, luxurious and unique statement in the fashion world. Crystaltext Chaton Bandings offer a wide range of design possibilities for the jewelry, fashion accessories, and interior segments.

62 030



R	002-010, 088
SS	PP 9 (1028)
M	5 M* 100%

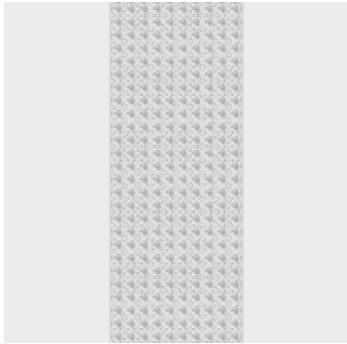
62 030	R	SS	M	100 %
Article number	This article is available in 2-10 and in 88 rows.	Stone size	Minimum order quantity in metre (M)	Documentation size in %

ORDERING EXAMPLE & PRODUCT VARIETY EXPLANATION

62 030	010	S010	001
Article number	3-digit code for number of rows	Type and color of base material S Synthetic 010 Transparent 012 Black	Color of crystals Please see the respective product matrix for all available code references.

* Please note: Bandings can be divided.

62 030



Rows	2 rows	3 rows	4 rows	5 rows	6 rows	7 rows	8 rows	9 rows	10 rows	88 rows	Color of Film	S010 Synthetic Transparent	S012 Synthetic Black
------	--------	--------	--------	--------	--------	--------	--------	--------	---------	---------	---------------	----------------------------	----------------------

Crystal

Crystal F (001)

Colors

Plain Colors

Aquamarine F (202)

Black Diamond F (215)

Dark Indigo F (288)

Fuchsia F (502)

Indicolite F (379)

Jet F (280)

Khaki F (550)

Light Siam F (227)

Rose F (209)

Smoked Topaz F (220)

Tanzanite F (539)

Crystal Effects

Transparent Effects

Crystal AB F (001 AB)

Crystal Golden Shadow F (001 GSHA)

Crystal Silver Shade F (001 SSHA)

Metallic Effects

Crystal Dorado F (001 DOR)

Crystal Iridescent Green F (001 IRIG)

Color Effects

Metallic Effects

Jet Hematite F (280 HEM)

62 031 (Honeycomb)



	Rows	3 rows	4 rows	5 rows	6 rows	10 rows	17 rows	Color of Film	S010 Synthetic Transparent	S012 Synthetic Black
Crystal										
Crystal F (001)		■	■	■	■	■	■		■	■
Colors										
Plain Colors										
Aquamarine F (202)		■	■	■	■	■	■		■	■
Black Diamond F (215)		■	■	■	■	■	■		■	■
Jet F (280)		■	■	■	■	■	■		■	■
Dark Indigo F (288)		■	■	■	■	■	■		■	■
Crystal Effects										
Transparent Effects										
Crystal AB F (001 AB)		■	■	■	■	■	■		■	■
Crystal Golden Shadow F (001 GSHA)		■	■	■	■	■	■		■	■
Crystal Silver Shade F (001 SSHA)		■	■	■	■	■	■		■	■
Metallic Effects										
Crystal Dorado F (001 DOR)		■	■	■	■	■	■		■	■
Crystal Iridescent Green F (001 IRIG)		■	■	■	■	■	■		■	■
Color Effects										
Metallic Effects										
Jet Hematite F (280 HEM)		■	■	■	■	■	■		■	■

ARTICLE EXPLANATION

Crystaltex Chaton is also available as Standard Motifs and Special Motifs (customized laser-cut-motifs). Up to four colors can be combined within one motif opening up a multitude of options for individual designs. All Crystaltex Chaton Standard Motifs are also available as it-version.

85 119 F/W 2012/13 **02/04**





















C	S010-001GSHA/001AB
E	PP9/PP9
S	~104x101
M	3 PCS 40%

85 119	02/04	C	E	S	M	40%
Article number	This product is shown on flag number 2 and 4.	Color assortment Color of base material (S010) is seperated from crystal colors with a hyphen. Color code 1 (001 GSHA) corresponds with element 1; color code 2 (001 AB) corresponds with element 2 etc.	Elements Crystaltex Motifs are available in stone sizes PP 9.	Motif size in mm	Minimum order quantity in pieces (PCS)	Documentation size in %

ORDERING EXAMPLE & PRODUCT VARIETY EXPLANATION

85 119	S010	001 GSHA	001 AB
Article number	Type and color of base material S Synthetic 010 Transparent 012 Black	Crystal color corresponding to element 1; color of most frequently used element in the motif Please see the respective product matrix for all available code references.	Crystal color corresponding to element 2; color of second most frequently used element in the motif

Crystaltex Chaton Motifs 85 100 onwards		Color of Film	
		S010 Synthetic Transparent	S012 Synthetic Black
Crystal			
 Crystal F (001)		■	■
Colors			
Plain Colors			
 Aquamarine F (202)		■	■
 Black Diamond F (215)		■	■
 Dark Indigo F (288)		■	■
 Fuchsia F (502)		■	■
 Indicolite F (379)		■	■
 Jet F (280)		■	■
 Khaki F (550)		■	■
 Light Siam F (227)		■	■
 Rose F (209)		■	■
 Smoked Topaz F (220)		■	■
 Tanzanite F (539)		■	■
Crystal Effects			
Transparent Effects			
 Crystal AB F (001 AB)		■	■
 Crystal Golden Shadow F (001 GSHA)		■	■
 Crystal Silver Shade F (001 SSHA)		■	■
Metallic Effects			
 Crystal Dorado F (001 DOR)		■	■
 Crystal Iridescent Green F (001 IRIG)		■	■
Color Effects			
Metallic Effects			
 Jet Hematite F (280 HEM)		■	■

Synthetics Hotfix

Crystaltex Chaton Motifs

Standard Collection



Standard Collection

85 102



C	I010-001
E	PP9
S	~23x14
M	135 PCS
	100%

85 103

02



C	S010-001AB/001
E	PP9/PP9
S	~33x32
M	45 PCS
	100%

85 104

02



C	S010-209
E	PP9
S	~94x67
M	9 PCS
	40%

85 105

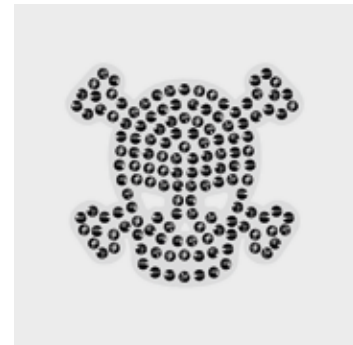
02



C	S010-215/280/001
E	PP9/PP9/PP9
S	~40x40
M	27 PCS
	100%

85 106

02



C	S010-280HEM
E	PP9
S	~32x30
M	45 PCS
	100%

85 108

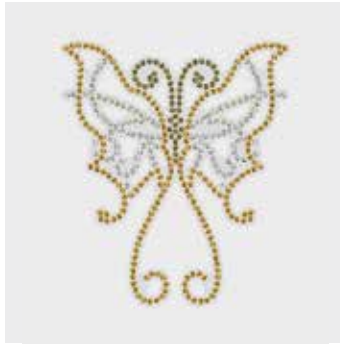
02



C	S010-502/227
E	PP9/PP9
S	~31x30
M	54 PCS
	100%

85 111

02



C	S010-001DOR/001SSHA/550
E	PP9/PP9/PP9
S	~61x71
M	9 PCS
	50%

85 112

02



C	S010-001GSHA/001DOR/001SSHA
E	PP9/PP9/PP9
S	~77x75
M	12 PCS
	45%

85 113

02



C	S010-001GSHA
E	PP9
S	~30x26
M	60 PCS
	100%

85 114

02



C	S010-379/001DOR/550
E	PP9/PP9/PP9
S	~84x55
M	9 PCS
	50%

85 116

02



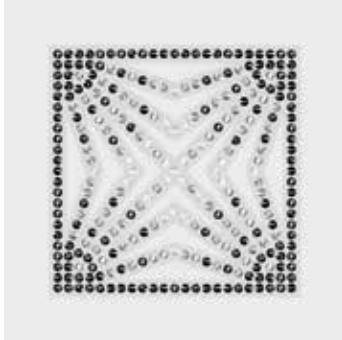
C	S010-001GSHA/001SSHA/001
E	PP9/PP9/PP9
S	~59x54
M	15 PCS
	70%

Synthetics Hotfix

Crystaltex Chaton Motifs

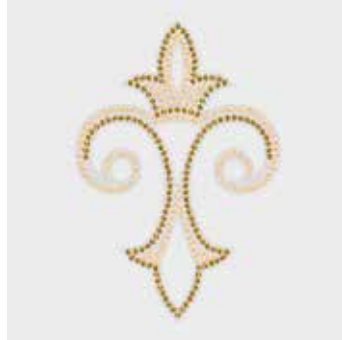
Standard Collection

85 117 **02**



C	S010-280HEM/001SSHA/001
E	PP9/PP9/PP9
S	~42x42
M	18 PCS
	80%

85 118 **02**



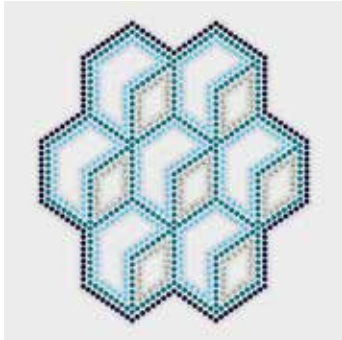
C	S010-001GSHA/001DOR
E	PP9/PP9
S	~56x81
M	12 PCS
	50%

85 119 **02**



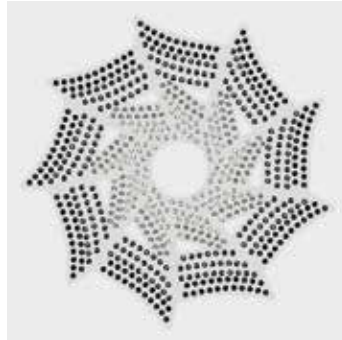
C	S010-001GSHA/001AB
E	PP9/PP9
S	~104x101
M	3 PCS
	40%

85 121 **02**



C	S010-379/202/288/001SSHA
E	PP9/PP9/PP9/PP9
S	~81x91
M	6 PCS
	45%

85 122 **02**



C	S010-280HEM/280/001SSHA/215
E	PP9/PP9/PP9/PP9
S	~83x83
M	6 PCS
	50%

85 127 **02**



C	S010-001AB/001
E	PP9/PP9
S	~60x46
M	18 PCS
	70%

85 134



C	S010-001GSHA/001DOR/220
E	PP9/PP9/PP9
S	~38x50
M	27 PCS
	80%

85 136 **02**



C	S010-220/001DOR/001GSHA
E	PP9/PP9/PP9
S	~77x75
M	12 PCS
	50%

85 137



C	S010-001
E	PP9
S	~24x23
M	99 PCS
	100%

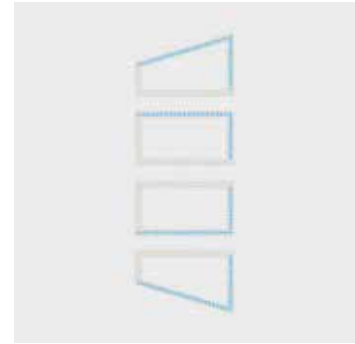


85 100 07



C	S010-001DOR/550/001GSHA
E	PP9/PP9/PP9
S	~132x31
M	9 PCS 30%

85 101 11



C	S010-202/001AB
E	PP9/PP9
S	~43x124
M	6 PCS 30%

85 135 03



C	S010-379/288/215/280HEM
E	PP9/PP9/PP9/PP9
S	~149x31
M	9 PCS 27%

A special motif is any individual design created by the customer, which is different from the Crystaltext Motifs Standard or Crystal Inspirations Collections. This service opens up many customization possibilities and enables you to profit from Swarovski's longtime experience and design expertise. A range of customization options for existing motifs is available (see "Customization Possibilities" below). You may also submit sketches of a design that will suit your special needs – such as a brand image or an image to suit a particular sales campaign. This will then be made up according to your specifications using Computer Aided Design, which allows for easy adjustments according to your needs. All Standard Crystaltext Motifs are also available as it-version and vice versa.

CUSTOMIZATION POSSIBILITIES FOR CRYSTALTEXT MOTIFS

Min. size: 12x12 mm (4x4 stones)

Max. size: 122x157 mm

Distance between the Flat Backs SS 10 (from stone centre to stone centre):

- Max. 4.8 mm
- Min. 3.4 mm

Distance between the Flat Backs SS 6 (from stone centre to stone centre):

- Max. 3.7 mm
- Min. 2.4 mm

Up to eight colors are possible for Crystaltext Motifs using either SS 6 or SS 10 stones (mix of stone sizes is not possible).

CUSTOMIZATION POSSIBILITIES FOR CRYSTALTEXT CHATON MOTIFS

Min. size: 10x10 mm

Max. size: 122x157 mm

Distance between Chatons art. 1028 PP 9 (from stone center to stone center): min. 1.70 mm – max. 4.5 mm

Up to four colors are possible for Crystaltext and Crystaltext-it Chaton Motifs using stone size PP 9.

ORDERING PROCESS

Send the request with a drawing you wish to order to your nearest Swarovski sales office. Make sure you include all measurements to the desired motif. Please also indicate which product group your special motif refers to. You will then receive a quotation including your article number, minimum order quantity (MOQ), price, and the line drawing of your special motif in PDF format. Please contact your Swarovski sales office again if any changes need to be made. Your special motif will be produced and delivered following your confirmation.

PLEASE NOTE

Please always submit your drawing of the desired motif to represent it in the actual size you require. A small sketch, when enlarged to the desired size, will have blurred lines that will make it difficult to correctly reinterpret. Pictures or drawings representing 100% size of the design or very good quality scans in JPG, BMP or DXF format will ensure that we have clear data to work with. These can also be sent via email or on a CD-ROM. If sending a sewing pattern, please include the whole pattern and not just cut outs. When the sketch is submitted as a hard copy by fax or e-mail, please include a scale legend (e.g. copy/scan with ruler next to the drawing). This will ensure that the desired size of the motif can be identified.

Special productions are generally offered to all our customers if feasibility is given and our General Terms and Conditions are applied.

Please note that the simple order of a design does not grant exclusive production of this design to the customer.

If detailed information on the possible tolerances is needed (e.g. cavity production for a metal part), please contact Swarovski who will place an application request within our application database.