
Metal Trimmings

Metal Trimmings are forward-integrated metal products. They can be sewn by hand or machine and mechanically applied onto different fabrics or other materials. Metal Trimmings are bestsellers among the textile, shoe, and accessories segments because their wide range of application possibilities ensure that they can be used in a multitude of different ways.

ARTICLE EXPLANATION

55 000



R	001-024
SS	SS 20
M	05 M
	100%

55 000	R	SS	M	100%
Article number	Number of rows	Stone size	Minimum order quantity in meters (M)	Documentation size in %
	This article is available from 1 to 24 rows.			

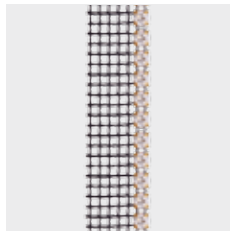
ORDERING EXAMPLE & PRODUCT VARIETY EXPLANATION

55 000	004	012	082	001
Article number	3-digit code for number of rows	Color of thread (without net-edge, on 1 side/2 sides): 012 Black (without net-edge) 022 White (without net-edge) 112 Black (on 1 side) 212 Black (on 2 sides) 122 White (on 1 side) 222 White (on 2 sides)	Color of casing 081 Gold 082 Silver 086 Gun Metal	Color of crystals Please see the respective product matrix for all available code references.

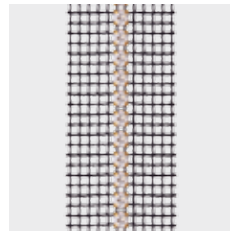
Please note: Articles with 1 row are only available with one or two side net-edge. The articles 52 001, 52 501, 55 001 and 55 501, however, can be ordered without net-edge.

AVAILABLE OPTIONS WITH NET-EDGE

All Chaton & Flat Back Bandings can be ordered with net-edge. This option can be added on one side or on both sides of the banding. Please see the respective product matrix for all available options.



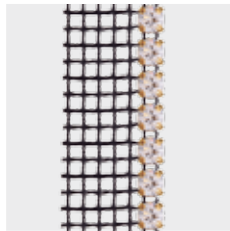
112
Black net-edge
on 1 side



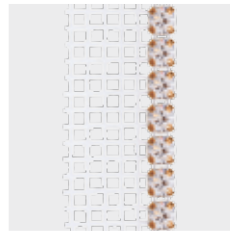
212
Black net-edge
on 2 sides

AVAILABLE COMBINATIONS OF THREAD & CASING

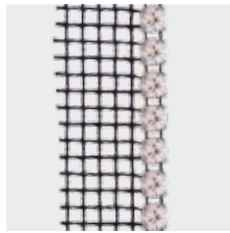
Chaton and Flat Back Bandings are available in three different casing colors and can be combined with two different thread/net-edge colors. Please see the respective product matrix for all available options.



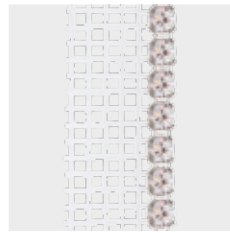
112 081
Black thread,
gold casing



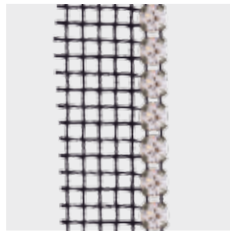
122 081
White thread,
gold casing



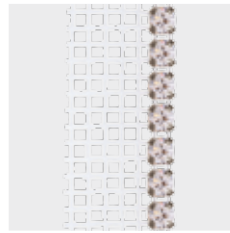
112 082
Black thread,
silver casing



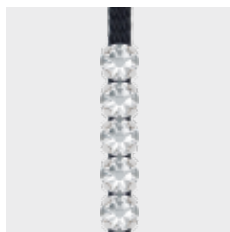
122 082
White thread,
silver casing



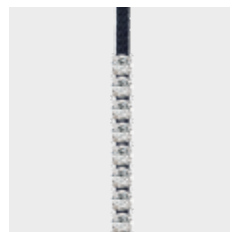
112 086
Black thread,
gun metal casing



122 086
White thread,
gun metal casing



012 082
Black



012 082
Black

Please note: The connective cotton thread differs from the net-edge.

Metal Trimmings

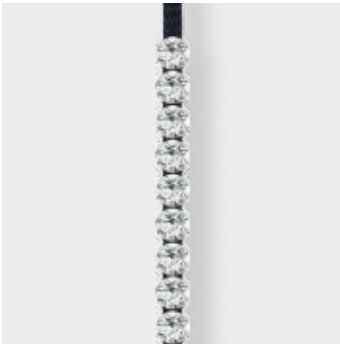
Chaton Bandings

52 000



R	001-024	
SS	SS 18	
M	05 M	100%

52 001*

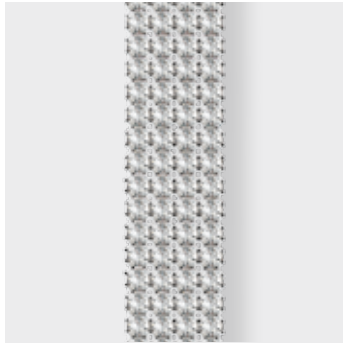


R	001	
SS	SS 18	
M	10 M	100%

52 000 52 001*		Color of Thread / Net-edge		
		012 / 112 / 212 Black	022 / 122 / 222 White	
		Color of Casing		
		081 Gold	082 Silver	086 Gun Metal
Crystal				
<input type="checkbox"/>	Crystal F (001)	<input checked="" type="checkbox"/>	<input checked="" type="checkbox"/>	<input checked="" type="checkbox"/>
Colors				
Plain Colors				
<input type="checkbox"/>	Black Diamond F (215)	<input checked="" type="checkbox"/>	<input checked="" type="checkbox"/>	<input checked="" type="checkbox"/>
<input type="checkbox"/>	Fuchsia F (502)	<input checked="" type="checkbox"/>	<input checked="" type="checkbox"/>	<input checked="" type="checkbox"/>
<input type="checkbox"/>	Greige F (284)	<input checked="" type="checkbox"/>	<input checked="" type="checkbox"/>	<input checked="" type="checkbox"/>
<input type="checkbox"/>	Jet F (280)	<input checked="" type="checkbox"/>	<input checked="" type="checkbox"/>	<input checked="" type="checkbox"/>
<input type="checkbox"/>	Light Colorado Topaz F (246)	<input checked="" type="checkbox"/>	<input checked="" type="checkbox"/>	<input checked="" type="checkbox"/>
<input type="checkbox"/>	Light Peach F (362)	<input checked="" type="checkbox"/>	<input checked="" type="checkbox"/>	<input checked="" type="checkbox"/>
<input type="checkbox"/>	Siam F (208)	<input checked="" type="checkbox"/>	<input checked="" type="checkbox"/>	<input checked="" type="checkbox"/>
<input type="checkbox"/>	Smoked Topaz F (220)	<input checked="" type="checkbox"/>	<input checked="" type="checkbox"/>	<input checked="" type="checkbox"/>
Crystal Effects				
Transparent Effects				
<input type="checkbox"/>	Crystal AB F (001 AB)	<input checked="" type="checkbox"/>	<input checked="" type="checkbox"/>	<input checked="" type="checkbox"/>
<input type="checkbox"/>	Crystal Golden Shadow F (001 GSHA)	<input checked="" type="checkbox"/>	<input checked="" type="checkbox"/>	<input checked="" type="checkbox"/>
<input type="checkbox"/>	Crystal Silver Shade F (001 SSHA)	<input checked="" type="checkbox"/>	<input checked="" type="checkbox"/>	<input checked="" type="checkbox"/>
Metallic Effects				
<input type="checkbox"/>	Crystal Dorado F (001 DOR)	<input checked="" type="checkbox"/>	<input checked="" type="checkbox"/>	<input checked="" type="checkbox"/>
Color Effects				
Metallic Effects				
<input type="checkbox"/>	Jet Hematite F (280 HEM)	<input checked="" type="checkbox"/>	<input checked="" type="checkbox"/>	<input checked="" type="checkbox"/>

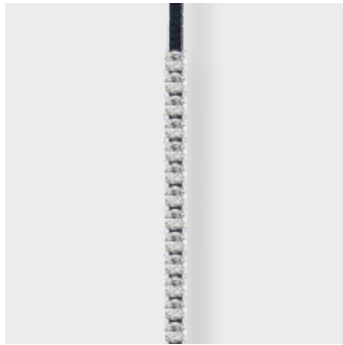
* Art. 52 001 is not available with net-edge. When ordering one row with net-edge, art. 52 000 is to be used.

52 500



R	001-024	
SS	PP 24	
M	05 M	100%

52 501*



R	001	
SS	PP 24	
M	10 M	100%



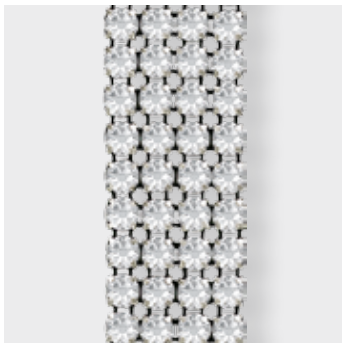
	Color of Thread / Net-edge		Color of Casing		
	012 / 112 / 212 Black	022 / 122 / 222 White	081 Gold	082 Silver	086 Gun Metal
Crystal					
Crystal F (001)	■	■	■	■	■
Colors					
Plain Colors					
Black Diamond F (215)	■	■	■	■	■
Dark Moss Green F (260)	■	■	■	■	■
Denim Blue F (266)	■	■	■	■	■
Fuchsia F (502)	■	■	■	■	■
Greige F (284)	■	■	■	■	■
Jet F (280)	■	■	■	■	■
Light Colorado Topaz F (246)	■	■	■	■	■
Light Peach F (362)	■	■	■	■	■
Light Silk F (261)	■	■	■	■	■
Light Turquoise F (263)	■	■	■	■	■
Rose Peach F (262)	■	■	■	■	■
Siam F (208)	■	■	■	■	■
Smoked Topaz F (220)	■	■	■	■	■
Tangerine F (259)	■	■	■	■	■
Crystal Effects					
Transparent Effects					
Crystal AB F (001 AB)	■	■	■	■	■
Crystal Antique Pink F (001 ANTP)	■	■	■	■	■
Crystal Blue Shade F (001 BLSH)	■	■	■	■	■
Crystal Golden Shadow F (001 GSHA)	■	■	■	■	■
Crystal Lilac Shadow F (001 LISH)	■	■	■	■	■
Crystal Luminous Green F (001 LUMG)	■	■	■	■	■
Crystal Silver Night F (001 SINI)	■	■	■	■	■
Crystal Silver Shade F (001 SSHA)	■	■	■	■	■
Metallic Effects					
Crystal Dorado F (001 DOR)	■	■	■	■	■
Crystal Iridescent Green F (001 IRIG)	■	■	■	■	■
Crystal Rose Gold F (001 ROGL)	■	■	■	■	■
Color Effects					
Metallic Effects					
Jet Hematite F (280 HEM)	■	■	■	■	■

* Art. 52 501 is not available with net-edge. When ordering one row with net-edge, art. 52 500 is to be used.

Metal Trimmings

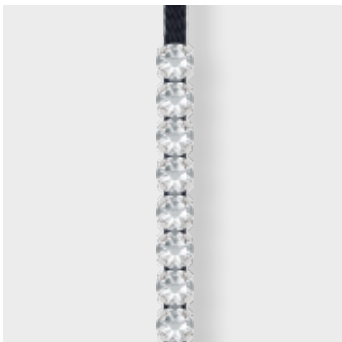
Flat Back Bandings

55 000



R	001-024	
SS	SS 20	
M	05 M	100%

55 001*

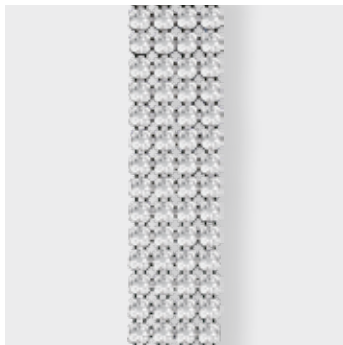


R	001	
SS	SS 20	
M	10 M	100%

	Color of Thread / Net-edge		Color of Casing		
	012 / 112 / 212 Black	022 / 122 / 222 White	081 Gold	082 Silver	086 Gun Metal
Crystal					
Crystal F (001)	■	■	■	■	■
Colors					
Plain Colors					
Black Diamond F (215)	■	■	■	■	■
Dark Moss Green F (260)	■	■	■	■	■
Denim Blue F (266)	■	■	■	■	■
Fuchsia F (502)	■	■	■	■	■
Greige F (284)	■	■	■	■	■
Jet F (280)	■	■	■	■	■
Light Amethyst F (212)	■	■	■	■	■
Light Colorado Topaz F (246)	■	■	■	■	■
Light Silk F (261)	■	■	■	■	■
Light Turquoise F (263)	■	■	■	■	■
Rose Peach F (262)	■	■	■	■	■
Siam F (208)	■	■	■	■	■
Smoked Topaz F (220)	■	■	■	■	■
Tangerine F (259)	■	■	■	■	■
Vintage Rose F (263)	■	■	■	■	■
Opal Colors					
Caribbean Blue Opal F (394)	■	■	■	■	■
Crystal Effects					
Transparent Effects					
Crystal AB F (001 AB)	■	■	■	■	■
Crystal Antique Pink F (001 ANTP)	■	■	■	■	■
Crystal Blue Shade F (001 BLSH)	■	■	■	■	■
Crystal Golden Shadow F (001 GSHA)	■	■	■	■	■
Crystal Lilac Shadow F (001 LISH)	■	■	■	■	■
Crystal Luminous Green F (001 LUMG)	■	■	■	■	■
Crystal Silver Night F (001 SINI)	■	■	■	■	■
Crystal Silver Shade F (001 SSHA)	■	■	■	■	■
Metallic Effects					
Crystal Dorado F (001 DOR)	■	■	■	■	■
Crystal Iridescent Green F (001 IRIG)	■	■	■	■	■
Crystal Rose Gold F (001 ROGL)	■	■	■	■	■
Color Effects					
Metallic Effects					
Jet Hematite F (280 HEM)	■	■	■	■	■

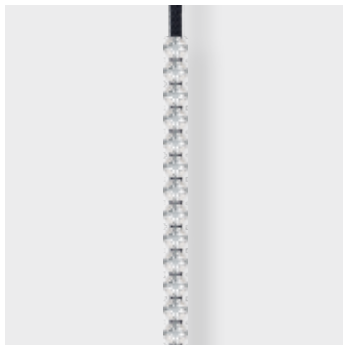
* Art. 55 001 is not available with net-edge. When ordering one row with net-edge, art. 55 000 is to be used.

55 500



R	001-024	
SS	SS 12	
M	10 M	100%

55 501*



R	001	
SS	SS 12	
M	10 M	100%



	55 500	
	55 501*	

Color of Thread / Net-edge	012 / 112 / 212 Black	022 / 122 / 222 White	Color of Casing	081 Gold	082 Silver	086 Gun Metal
----------------------------	-----------------------	-----------------------	-----------------	----------	------------	---------------

Crystal

Crystal F (001)						
-----------------	--	--	--	--	--	--

Colors

Plain Colors

Black Diamond F (215)						
Dark Moss Green F (260)						
Denim Blue F (266)						
Fuchsia F (502)						
Greige F (284)						
Jet F (280)						
Light Amethyst F (212)						
Light Colorado Topaz F (246)						
Light Silk F (261)						
Light Turquoise F (263)						
Rose Peach F (262)						
Siam F (208)						
Smoked Topaz F (220)						
Tangerine F (259)						
Vintage Rose F (263)						

Opal Colors

Caribbean Blue Opal F (394)						
-----------------------------	--	--	--	--	--	--

Crystal Effects

Transparent Effects

Crystal AB F (001 AB)						
Crystal Antique Pink F (001 ANTP)						
Crystal Blue Shade F (001 BLSH)						
Crystal Golden Shadow F (001 GSHA)						
Crystal Lilac Shadow F (001 LISH)						
Crystal Luminous Green F (001 LUMG)						
Crystal Silver Night F (001 SINI)						
Crystal Silver Shade F (001 SSHA)						

Metallic Effects

Crystal Dorado F (001 DOR)						
Crystal Iridescent Green F (001 IRIG)						
Crystal Rose Gold F (001 ROGL)						

Color Effects

Metallic Effects

Jet Hematite F (280 HEM)						
--------------------------	--	--	--	--	--	--

* Art. 55 501 is not available with net-edge. When ordering one row with net-edge, art. 55 500 is to be used.

ARTICLE EXPLANATION

52 300



R	001-024
SS	SS 18
M	05 M 100%

52 300	R	SS	M	100%
Article number	Number of rows	Stone size	Minimum order quantity in meters (M)	Documentation size in %
	This article is available from 1 to 24 rows			

ORDERING EXAMPLE & PRODUCT VARIETY EXPLANATION

52 300	001	012	082	001
Article number	3-digit code for number of rows	Color of thread (without net-edge, on 1 side/2 sides): 012 Black (without net-edge) 022 White (without net-edge) 112 Black (on 1 side) 212 Black (on 2 sides) 122 White (on 1 side) 222 White (on 2 sides)	Color of casing 081 Gold 082 Silver 086 Gun Metal	Color of crystals Please see the respective product matrix for all available code references.

Metal Trimmings

Spike Bandings

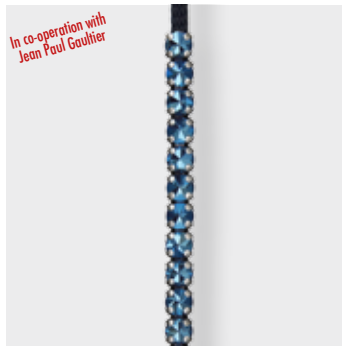
52 300



In co-operation with Jean Paul Gaultier

R	001-024
SS	SS 18
M	05 M
	100%

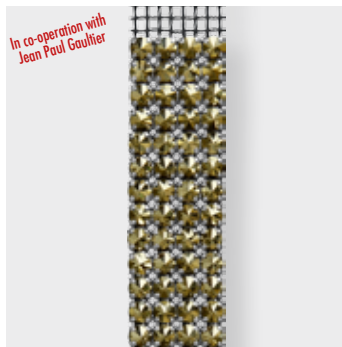
52 301*



In co-operation with Jean Paul Gaultier

R	001
SS	SS 18
M	10 M
	100%

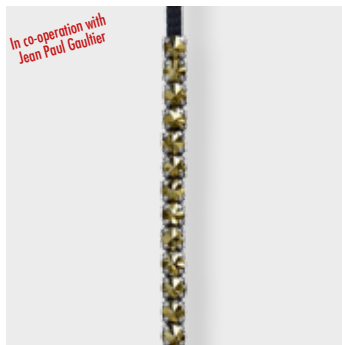
52 400



In co-operation with Jean Paul Gaultier

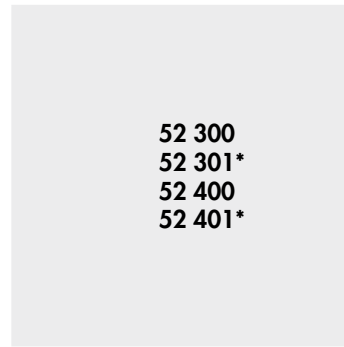
R	001-024
SS	PP 24
M	05 M
	100%

52 401*



In co-operation with Jean Paul Gaultier

R	001
SS	PP 24
M	10 M
	100%

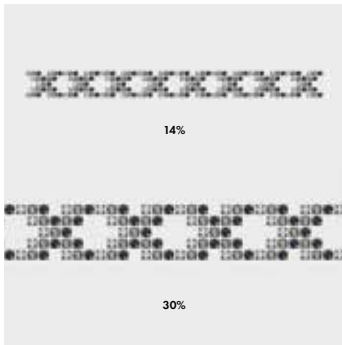


	Color of Thread / Net-edge			Color of Casing		
	012 / 112 / 212 Black	022 / 122 / 222 White		081 Gold	082 Silver	086 Gun Metal
Crystal Effects						
Metallic Effects						
Crystal Chrom (001 CHR)						
Crystal Dorado (001 DOR)						
Crystal Metallic Blue (001 METBL)						
Crystal Metallic Light Gold (001 MLGLD)						
Crystal Rose Gold (001 ROGL)						
Color Effects						
Metallic Effects						
Jet Hematite (280 HEM)						
Jet Nut (280 NUT)						

* Art. 52 301 and 52 401 are not available with net-edge. When ordering one row with net-edge, art. 52 300 (for 52 301) or 52 400 (for 52 401) is to be used.

ARTICLE EXPLANATION

52 114



C	086-280HEM/215/001
E	CH SS18/SS18/SS18
S	~280x25
M	10 PCS

52 114	C	E	S	M	40%
Article number	Color assortment	Elements and stone sizes	Motif size in mm without net-edge	Minimum order quantity in pieces (PCS)	Documentation size in %
		This product is a Chaton Motif (CH). For details please refer to the sizes overview at the end of this Collection.	Slight size deviations may occur, +/- 2% or +/- 8% depending on the motif		

ORDERING EXAMPLE & PRODUCT VARIETY EXPLANATION

52 114	001	422	086	280 HEM
Article number	3-digit code for number of rows	Color of thread & net-edge	Color of casing	Crystal color corresponding to element 1; color of most frequently used element in the motif. Please see the respective product matrix for all available code references.
	Always 001	Chaton Motifs by piece. Chaton Motifs by meter. Please see the respective product tables for all available net-edge options.	081 Gold 082 Silver 086 Gun Metal	
>> 215	001			
Crystal color corresponding to element 2; color of second most frequently used element in the motif	Crystal color corresponding to element 3; color of third most frequently used element in the motif			

AVAILABLE OPTIONS WITH NET-EDGE

Depending on the motif, Chaton and Flat Back Motifs can be ordered with net-edge on 0, 1, 2, 3 or 4 sides.* Please see the respective product matrix for all available options and tolerances.



122
White net-edge
on one side



322
White net-edge
on three sides



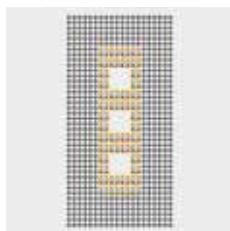
222
White net-edge
on two sides



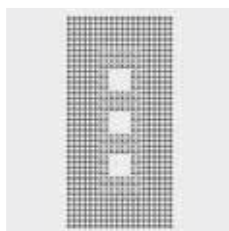
422
White net-edge
on four sides

AVAILABLE THREAD / NET-EDGE & CASING COLORS

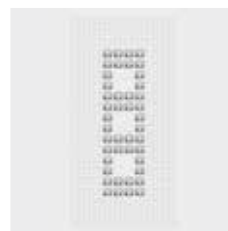
Chaton and Flat Back Motifs are available in three different casing colors and can be combined with two different thread/net-edge colors. Please see the respective product matrix for all available options.



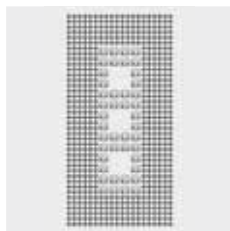
412 081
Black thread
& net-edge
on four sides,
gold casing



412 086
Black thread
& net-edge
on four sides,
gun metal
casing



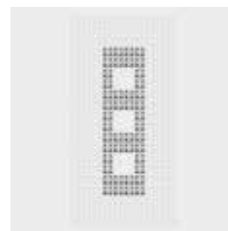
422 082
White thread
& net-edge
on four sides,
silver casing



412 082
Black thread
& net-edge
on four sides,
silver casing



422 081
White thread
& net-edge
on four sides,
gold casing



422 086
White thread
& net-edge
on four sides,
gun metal
casing

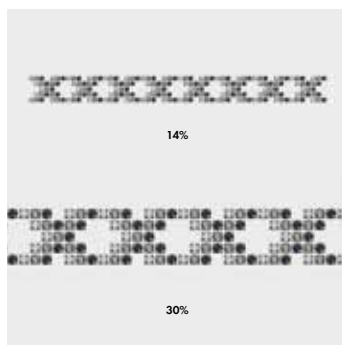
* Please note: depending on the motif, Chaton and Flat Back Motifs by the metre are only available with net-edge on none, one or two sides.

52 100 to 52 608		Color of Thread / Netedge		Color of Casing		
		012 / 112 / 212 Black	022 / 122 / 222 White	081 Gold	082 Silver	086 Gun Metal
Crystal						
Crystal F (001)		■	■	■	■	■
Colors						
Plain Colors						
Black Diamond F (215)		■	■	■	■	■
Dark Moss Green F (260)*		■	■	■	■	■
Denim Blue F (266)*		■	■	■	■	■
Fuchsia F (502)		■	■	■	■	■
Greige F (284)		■	■	■	■	■
Jet F (280)		■	■	■	■	■
Light Colorado Topaz F (246)		■	■	■	■	■
Light Peach F (362)		■	■	■	■	■
Light Silk F (261)*		■	■	■	■	■
Light Turquoise F (263)*		■	■	■	■	■
Rose Peach F (262)*		■	■	■	■	■
Siam F (208)		■	■	■	■	■
Smoked Topaz F (220)		■	■	■	■	■
Tangerine F (259)*		■	■	■	■	■
Crystal Effects						
Transparent Effects						
Crystal AB F (001 AB)		■	■	■	■	■
Crystal Antique Pink F (001 API)*		■	■	■	■	■
Crystal Blue Shade F (001 BLSH)*		■	■	■	■	■
Crystal Golden Shadow F (001 GSHA)		■	■	■	■	■
Crystal Lilac Shadow F (001 LISH)*		■	■	■	■	■
Crystal Luminous Green F (001 LUMG)*		■	■	■	■	■
Crystal Silver Night F (001 SINI)*		■	■	■	■	■
Crystal Silver Shade F (001 SSHA)		■	■	■	■	■
Metallic Effects						
Crystal Dorado F (001 DOR)		■	■	■	■	■
Crystal Iridescent Green F (001 IRIG)*		■	■	■	■	■
Crystal Rose Gold F (001 ROGL)*		■	■	■	■	■
Color Effects						
Metallic Effects						
Jet Hematite F (280 HEM)		■	■	■	■	■

* only available for store size PP 24



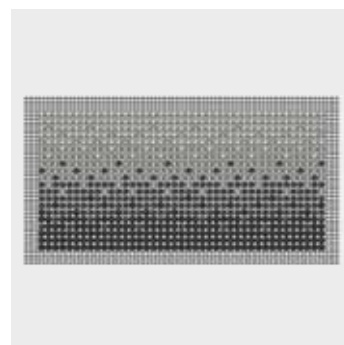
52 114



C 086-280HEM/215/001
 E CH SS18/SS18/SS18
 S ~280x25
 M 10 PCS

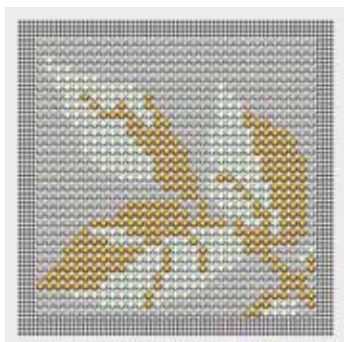
52 204

02



C 086-280/280HEM/215/001SSHA
 E CH PP24/PP24/PP24/PP24
 S ~189x92
 M 10 PCS | 20%

52 609



C 082-001SSHA/001IRIG/001DOR
 E CH PP24/PP24/PP24
 S ~105X105 (EXCL. NET-EDGE)
 M 10 PCS | 35%

52 610

02



C 082-284/001ROGL/001SSHA/001GSHA
 E CH PP24/PP24/PP24/PP24
 S ~133x34
 M 10 PCS | 30%

AVAILABLE OPTIONS WITH NET-EDGE

Article Number	1 Side	2 Sides	3 Sides	4 Sides	Tolerance
52 114	112 Black / 122 White	212 Black / 222 White	312 Black / 322 White	412 Black / 422 White	+/- 8%
52 204	112 Black / 122 White	212 Black / 222 White	312 Black / 322 White	412 Black / 422 White	+/- 8%
52 609	112 Black / 122 White	212 Black / 222 White	312 Black / 322 White	412 Black / 422 White	+/- 8%
52 610	112 Black / 122 White	212 Black / 222 White	312 Black / 322 White	412 Black / 422 White	+/- 8%

55 100 to 55 618		Color of Thread / Netedge		012 / 112 / 212 Black	022 / 122 / 222 White	Color of Casing		081 Gold	082 Silver	086 Gun Metal
Crystal										
Crystal F (001)										
Colors										
Plain Colors										
Black Diamond F (215)										
Dark Moss Green F (260)										
Denim Blue F (266)										
Fuchsia F (502)										
Greige F (284)										
Jet F (280)										
Light Amethyst F (212)										
Light Colorado Topaz F (246)										
Light Silk F (261)										
Light Turquoise F (263)										
Rose Peach F (262)										
Siam F (208)										
Smoked Topaz F (220)										
Tangerine F (259)										
Vintage Rose F (263)										
Opal Colors										
Caribbean Blue Opal F (394)										
Crystal Effects										
Transparent Effects										
Crystal AB F (001 AB)										
Crystal Antique Pink F (001 ANTP)										
Crystal Blue Shade F (001 BLSH)										
Crystal Golden Shadow F (001 GSHA)										
Crystal Lilac Shadow F (001 LISH)										
Crystal Luminous Green F (001 LUMG)										
Crystal Silver Night F (001 SINI)										
Crystal Silver Shade F (001 SSHA)										
Metallic Effects										
Crystal Dorado F (001 DOR)										
Crystal Iridescent Green F (001 IRIG)										
Crystal Rose Gold F (001 ROGL)										
Color Effects										
Metallic Effects										
Jet Hematite F (280 HEM)										

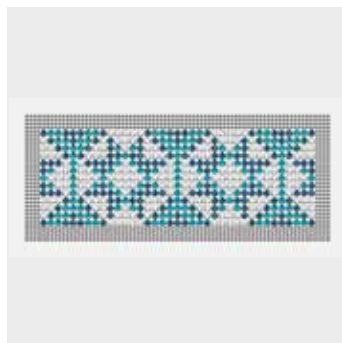
Metal Trimmings

Flat Back Motifs

Standard Collection



55 126 **02**



C	082-001/266/263
E	FB SS20/SS20/SS20
S	~182x64 (EXCL. NET-EDGE)
M	10 PCS 20%

55 127 **02**



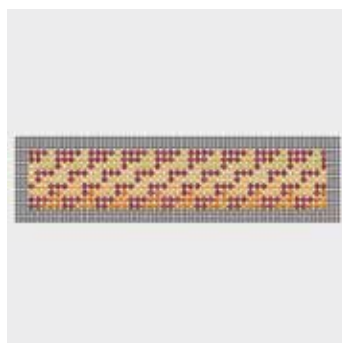
C	086-280/215/220/246/208/001GSHA/ 280HEM/001SINI
E	FB SS20
S	~231x80 (EXCL. NET-EDGE)
M	10 PCS 17%

55 616



C	082-001BLSH/263/266/280HEM/280
E	SS12/SS12/SS12/SS12/SS12
S	~196x59 (EXCL. NET-EDGE)
M	10 PCS 20%

55 619 **02**



C	081-001LISH/001LUMG/261/001GSHA/ 001ROGL
E	SS12/SS12/SS12/SS12/SS12
S	~157x31 (EXCL. NET-EDGE)
M	10 PCS 25%

55 621 **02**



C	081-261/502/260/208
E	FB SS12/SS12/SS12/SS12
S	~164x59 (EXCL. NET-EDGE)
M	10 PCS 24%



55 620

04



C	086-001ROGL/280/001SSHA/246	
E	SS12/SS12/SS12/SS12	
S	~31x73 (EXCL. NET-EDGE)	
M	10 PCS	45%

AVAILABLE OPTIONS WITH NET-EDGE

Article Number	1 Side	2 Sides	3 Sides	4 Sides	Tolerance
55 126	112 Black / 122 White	212 Black / 222 White	312 Black / 322 White	412 Black / 422 White	+/- 8%
55 127				412 Black / 422 White	+/- 8%
55 616	112 Black / 122 White	212 Black / 222 White	312 Black / 322 White	412 Black / 422 White	+/- 8%
55 619	112 Black / 122 White	212 Black / 222 White	312 Black / 322 White	412 Black / 422 White	+/- 8%
55 621	112 Black / 122 White	212 Black / 222 White	312 Black / 322 White	412 Black / 422 White	+/- 8%

SPECIAL MOTIF SERVICE

A special motif is any individual design created by the customer, which is different from the Metal Trimmings Standard or Crystal Inspirations Collection. This service opens up many customization possibilities and enables you to profit from Swarovski's longtime experience and design expertise. A range of customization options for existing motifs is available (see "Customization Possibilities" below). You may also submit sketches of a design that will suit your special needs – such as a brand image or an image to suit a particular sales campaign. This will then be made up according to your specifications using Computer Aided Design, which allows for easy adjustments according to your needs.

CUSTOMIZATION POSSIBILITIES

- Change of size of an existing motif
- Logos or brand names
- Creation of pieces or rows
- Up to nine colors/elements possible per Metal Trimming
- For thread- and net-edge options please see the respective matrix for all available options.

ORDERING PROCESS

Send the request with a drawing you wish to order to your nearest Swarovski sales office. Make sure you include all measurements to the desired motif. Please also indicate which product group your special motif refers to (Flat Back Motifs, Chaton Motifs etc.). You will then receive a quotation including your article number, minimum order quantity, price, and the line drawing of your special motif in PDF format. Please contact your Swarovski sales office again if any changes need to be made. Your special motif will be produced and delivered following your confirmation.

PLEASE NOTE

Please always submit your drawing of the desired motif to represent it in the actual size you require. A small sketch, when enlarged to the desired size, will have blurred lines that will make it difficult to correctly reinterpret. Pictures or drawings representing 100% size of the design or very good quality scans in JPG, BMP or DXF format will ensure that we have clear data to work with. These can also be sent via email or on a CD-ROM. If sending a sewing pattern, please include the whole pattern and not just cut outs. When the sketch is submitted as a hard copy by fax or e-mail, please include a scale legend (e.g. copy/scan with ruler next to the drawing). This will ensure that the desired size of the motif can be identified.

Special productions are generally offered to all our customers if feasibility is given and our General Terms and Conditions are applied. Please note that the simple order of a design does not grant exclusive production of this design to the customer.

ARTICLE EXPLANATION

53 000



SS SS 18	
M 1,000 PCS	100%

53 000	SS	M	100%
Article number	Stone size	Minimum order quantity in pieces (PCS)	Documentation size in %

ORDERING EXAMPLE & PRODUCT VARIETY EXPLANATION

53 000	082	001
Article number	Color of casing	Color of crystals
	081 Gold 082 Silver 086 Gun Metal 088 Stainless Steel	Please see the respective product matrix for all available code references.

Please note that the Back Parts for Rivets have to be ordered separately. Please see the respective product matrix for all available Back Parts on page 605.

Metal Trimmings

Metal Components

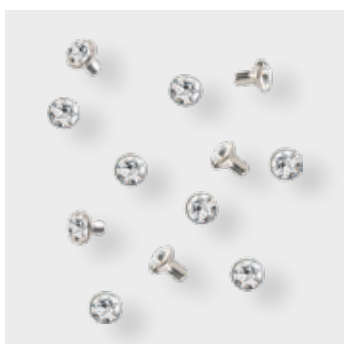
Rivets

53 000 Rivets



SS SS 18	
M 1,000 PCS	100%

53 002* Rivets



SS SS 18	
M 1,000 PCS	100%

	Color of Casing			
	081 Gold	082 Silver	086 Gun Metal	088 Stainless Steel
53 000 53 002**				
Crystal				
Crystal F (001)	■	■	■	■
Colors				
Plain Colors				
Amethyst F (204)	■	■	■	■
Black Diamond F (215)	■	■	■	■
Dark Indigo F (288)	■	■	■	■
Fuchsia F (502)	■	■	■	■
Greige F (284)	■	■	■	■
Jet F (280)	■	■	■	■
Light Colorado Topaz F (246)	■	■	■	■
Light Siam F (227)	■	■	■	■
Peridot F (214)	■	■	■	■
Rose F (209)	■	■	■	■
Sapphire F (206)	■	■	■	■
Siam F (208)	■	■	■	■
Smoked Topaz F (220)	■	■	■	■
Topaz F (203)	■	■	■	■
Vintage Rose F (319)	■	■	■	■
Crystal Effects				
Transparent Effects				
Crystal AB F (001 AB)	■	■	■	■
Crystal Golden Shadow F (001 GSHA)	■	■	■	■
Crystal Silver Shade F (001 SSHA)	■	■	■	■

* Please note that art. 53 002 was especially developed for an application without back part.

** Please note that art. 53 002 is not available in Stainless Steel.

53 001 Rivets



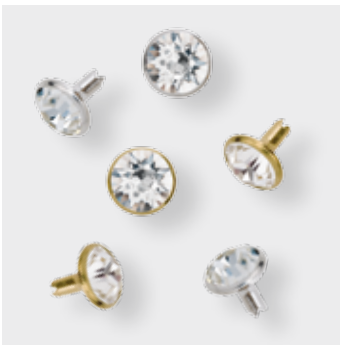
SS SS 29	
M 500 PCS	100%

53 005 Rivets



SS SS 34	
M 500 PCS	100%

53 006 Rivets



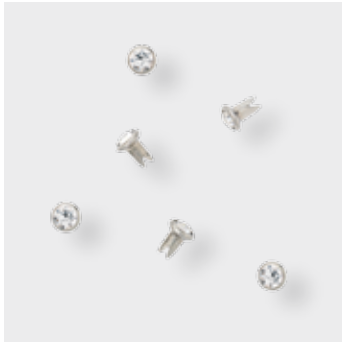
SS SS 39	
M 300 PCS	100%

53 001* 53 005* 53 006*	Color of Casing	081 Gold	082 Silver	086 Gun Metal	088 Stainless Steel
-------------------------------	-----------------	----------	------------	---------------	---------------------

Crystal	081 Gold	082 Silver	086 Gun Metal	088 Stainless Steel
Crystal F (001)	■	■	■	■
Colors				
Plain Colors				
Amethyst F (204)	■	■	■	■
Black Diamond F (215)	■	■	■	■
Dark Indigo F (288)	■	■	■	■
Dark Moss Green F (260)	■	■	■	■
Denim Blue F (266)	■	■	■	■
Fuchsia F (502)	■	■	■	■
Greige F (284)	■	■	■	■
Jet F (280)	■	■	■	■
Light Colorado Topaz F (246)	■	■	■	■
Light Siam F (227)	■	■	■	■
Light Silk F (261)	■	■	■	■
Light Turquoise F (263)	■	■	■	■
Peridot F (214)	■	■	■	■
Rose F (209)	■	■	■	■
Sapphire F (206)	■	■	■	■
Siam F (208)	■	■	■	■
Smoked Topaz F (220)	■	■	■	■
Tangerine F (259)	■	■	■	■
Topaz F (203)	■	■	■	■
Vintage Rose F (319)	■	■	■	■
Crystal Effects				
Transparent Effects				
Crystal AB F (001 AB)	■	■	■	■
Crystal Blue Shade F (001 BLSH)	■	■	■	■
Crystal Golden Shadow F (001 GSHA)	■	■	■	■
Crystal Lilac Shadow F (001 LISH)	■	■	■	■
Crystal Luminous Green F (001 LUMG)	■	■	■	■
Crystal Silver Night F (001 SINI)	■	■	■	■
Crystal Silver Shade F (001 SSHA)	■	■	■	■
Metallic Effects				
Crystal Iridescent Green F (001 IRIG)	■	■	■	■
Crystal Rose Gold F (001 ROGL)	■	■	■	■

* For respective Back Parts please refer to the chapter "Metal Trimmings" on page 605.

53 008 Rivets



SS PP 24	
M 500 PCS	100%



- Crystal**
- Crystal F (001)
- Colors**
- Plain Colors**
- Amethyst F (204)
- Black Diamond F (215)
- Dark Indigo F (288)
- Dark Moss Green F (260)
- Denim Blue F (266)
- Fuchsia F (502)
- Greige F (284)
- Jet F (280)
- Light Colorado Topaz F (246)
- Light Siam F (227)
- Light Silk F (261)
- Light Turquoise F (263)
- Peridot F (214)
- Rose F (209)
- Sapphire F (206)
- Siam F (208)
- Smoked Topaz F (220)
- Tangerine F (259)
- Topaz F (203)
- Vintage Rose F (319)
- Crystal Effects**
- Transparent Effects**
- Crystal AB F (001 AB)
- Crystal Blue Shade F (001 BLSH)
- Crystal Golden Shadow F (001 GSHA)
- Crystal Lilac Shadow F (001 LISH)
- Crystal Luminous Green F (001 LUMG)
- Crystal Silver Night F (001 SINI)
- Crystal Silver Shade F (001 SSHA)
- Metallic Effects**
- Crystal Iridescent Green F (001 IRIG)
- Crystal Rose Gold F (001 ROGL)

* For respective Back Parts please refer to the chapter "Metal Trimmings" on page 605.

53 400 Crystal Pearl Rivets



SS 6 mm	
M 500 PCS	100%

53 401 Crystal Pearl Rivets



SS 8 mm	
M 300 PCS	100%

53 402 Crystal Pearl Rivets



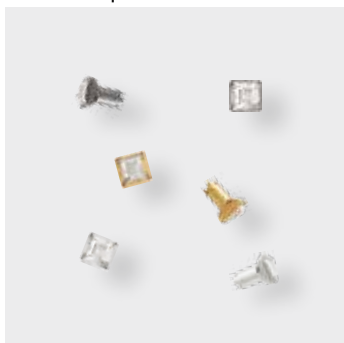
SS 10 mm	
M 300 PCS	100%

53 400
53 401
53 402

Color of Casing	081 Gold	082 Silver	086 Gun Metal
Colors			
Crystal Bronze Pearl (001 295)	■	■	■
Crystal Cream Pearl (001 620)	■	■	■
Crystal Light Creamrose Pearl (001 618)	■	■	■
Crystal Grey Pearl (001 731)	■	■	■
Crystal Rose Gold Pearl (001 769)	■	■	■
Crystal White Pearl (001 650)	■	■	■
Gemcolors			
Crystal Ivory Pearl (001 708)	■	■	■
Crystal Mystic Black Pearl (001 335)	■	■	■

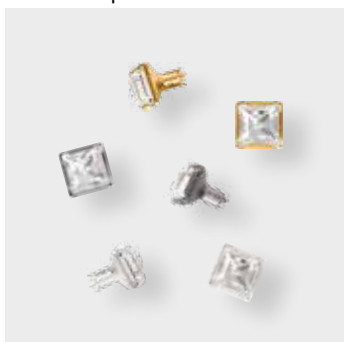
* For respective Back Parts please refer to the chapter "Metal Trimmings" on page 605.

53 500 Square Rivets



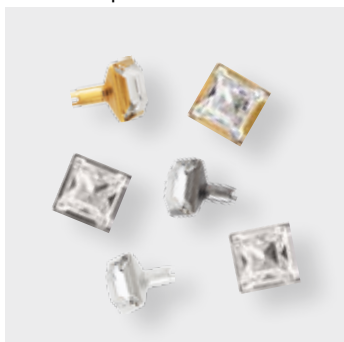
SS 4 mm
M 500 PCS 100%

53 501 Square Rivets



SS 6 mm
M 300 PCS 100%

53 502 Square Rivets



SS 8 mm
M 300 PCS 100%

	Color of Casing		
	081 Gold	082 Silver	086 Gun Metal
53 500			
53 501			
53 502			
Crystal			
Crystal F (001)	■	■	■
Colors			
Plain Colors			
Amethyst F (204)	■	■	■
Black Diamond F (215)	■	■	■
Dark Moss Green F (260)	■	■	■
Denim Blue F (266)	■	■	■
Fuchsia F (502)	■	■	■
Greige F (284)	■	■	■
Jet F (280)	■	■	■
Light Colorado Topaz F (246)	■	■	■
Light Silk F (261)	■	■	■
Light Turquoise F (263)	■	■	■
Rose F (209)	■	■	■
Rose Peach F (262)	■	■	■
Siam F (208)	■	■	■
Smoked Topaz F (220)	■	■	■
Tangerine F (259)	■	■	■
Crystal Effects			
Transparent Effects			
Crystal AB F (001 AB)	■	■	■
Crystal Antique Pink F (001 ANTP)	■	■	■
Crystal Blue Shade F (001 BLSH)	■	■	■
Crystal Golden Shadow F (001 GSHA)	■	■	■
Crystal Lilac Shadow F (001 LISH)	■	■	■
Crystal Luminous Green F (001 LUMG)	■	■	■
Crystal Silver Shade F (001 SSHA)	■	■	■
Metallic Effects			
Crystal Iridescent Green F (001 IRIG)	■	■	■
Crystal Rose Gold F (001 ROGL)	■	■	■

* For respective Back Parts please refer to the chapter "Metal Trimmings" on page 605.

53 600 Chessboard Rivets



SS 6 mm
M 300 PCS 100%

53 600		Color of Casing		
		081 Gold	082 Silver	086 Gun Metal
Crystal				
Crystal F (001)				
Colors				
Plain Colors				
Aquamarine F (202)				
Black Diamond F (215)				
Jet F (280)				
Crystal Effects				
Transparent Effects				
Crystal AB F (001 AB)				
Crystal Antique Pink F (001 ANTP)				
Crystal Golden Shadow F (001 GSHA)				
Crystal Red Magma F (001 REDM)				

* For respective Back Parts please refer to the chapter "Metal Trimmings" on page 605.

53 700 Star Rivets

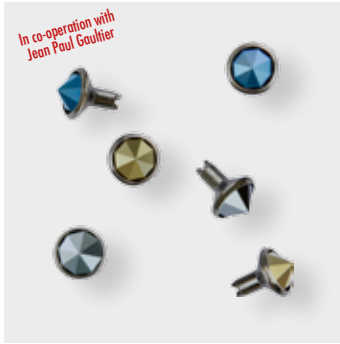


SS	10 mm	
M	300 PCS	100%

53 700		Color of Casing		
		081 Gold	082 Silver	086 Gun Metal
Crystal				
Crystal F (001)				
Colors				
Plain Colors				
Jet F (280)				
Crystal Effects				
Transparent Effects				
Crystal AB F (001 AB)				
Crystal Bermuda Blue F (001 BBL)				
Crystal Golden Shadow F (001 GSHA)				
Crystal Silver Shade F (001 SSHA)				
Crystal Vitrail Light F (001 VL)				
Crystal Vitrail Medium F (001 VM)				
Color Effects				
Metallic Effects				
Jet Hematite F (280 HEM)				

* For respective Back Parts please refer to the chapter "Metal Trimmings" on page 605.

53 010 Spike Rivets



SS SS 29	
M 144 PCS	100%

53 011 Spike Rivets



SS SS 39	
M 144 PCS	100%

53 503 Spike Rivets



SS 8 mm	
M 144 PCS	100%

53 010 53 011 53 503	Color of Casing	081 Gold	082 Silver	086 Gun Metal
Crystal Effects				
Metallic Effects				
Crystal Chrom (001 CHRM)				
Crystal Dorado (001 DOR)				
Crystal Metallic Blue (001 METBL)				
Crystal Metallic Light Gold (001 MLGLD)				
Crystal Rose Gold (001 ROGL)				
Color Effects				
Metallic Effects				
Jet Hematite (280 HEM)				
Jet Nut (280 NUT)				

* For respective Back Parts please refer to the chapter "Metal Trimmings" on page 605.

53 007

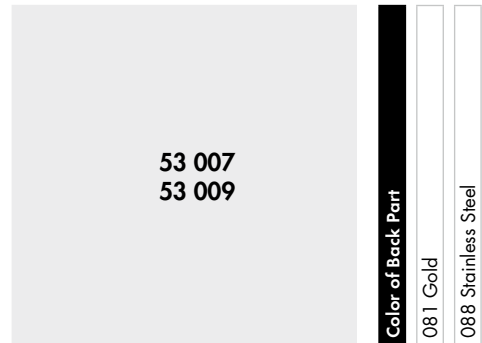


M 1,000 PCS | 100%

53 009



M 1,000 PCS | 100%



53 007
53 009

Color of Back Part

081 Gold

088 Stainless Steel

Rivets (Color of Casing)

53 000 (081/082/086)	■	■
53 000 (088)	■	■
53 001 (081/082/086)	■	■
53 001 (088)	■	■
53 005 (081/082/086)	■	■
53 005 (088)	■	■
53 006 (081/082/086)	■	■
53 006 (088)	■	■
53 008 (088)	■	■
53 010 (081/082/086)	■	■
53 011 (081/082/086)	■	■
53 400 (081/082/086)	■	■
53 401 (081/082/086)	■	■
53 402 (081/082/086)	■	■
53 500 (081/082/086)	■	■
53 501 (081/082/086)	■	■
53 502 (081/082/086)	■	■
53 503 (081/082/086)	■	■
53 600 (081/082/086)	■	■
53 700 (081/082/086)	■	■

ORDERING EXAMPLE & PRODUCT VARIETY EXPLANATION

53 007

Article number

081

Color of casing

081 Gold

088 Stainless Steel

53 100 Rose Montées



SS SS 12
M 1,440 PCS 100%

53 102 Rose Montées

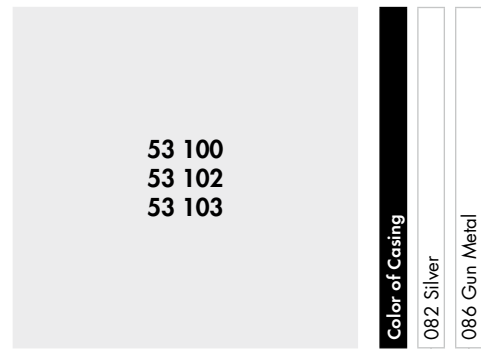


SS SS 16
M 1,440 PCS 100%

53 103 Rose Montées

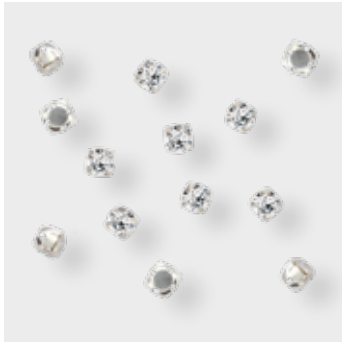


SS SS 30
M 720 PCS 100%



	Color of Casing	082 Silver	086 Gun Metal
Crystal			
Crystal F (001)		<input checked="" type="checkbox"/>	<input checked="" type="checkbox"/>
Colors			
Plain Colors			
Amethyst F (204)		<input checked="" type="checkbox"/>	<input checked="" type="checkbox"/>
Black Diamond F (215)		<input checked="" type="checkbox"/>	<input checked="" type="checkbox"/>
Dark Moss Green F (260)		<input checked="" type="checkbox"/>	<input checked="" type="checkbox"/>
Dark Indigo F (288)		<input checked="" type="checkbox"/>	<input checked="" type="checkbox"/>
Denim Blue F (266)		<input checked="" type="checkbox"/>	<input checked="" type="checkbox"/>
Fuchsia F (502)		<input checked="" type="checkbox"/>	<input checked="" type="checkbox"/>
Greige F (284)		<input checked="" type="checkbox"/>	<input checked="" type="checkbox"/>
Jet F (280)		<input checked="" type="checkbox"/>	<input checked="" type="checkbox"/>
Light Colorado Topaz F (246)		<input checked="" type="checkbox"/>	<input checked="" type="checkbox"/>
Light Siam F (227)		<input checked="" type="checkbox"/>	<input checked="" type="checkbox"/>
Light Silk F (261)		<input checked="" type="checkbox"/>	<input checked="" type="checkbox"/>
Light Turquoise F (263)		<input checked="" type="checkbox"/>	<input checked="" type="checkbox"/>
Peridot F (214)		<input checked="" type="checkbox"/>	<input checked="" type="checkbox"/>
Rose F (209)		<input checked="" type="checkbox"/>	<input checked="" type="checkbox"/>
Sapphire F (206)		<input checked="" type="checkbox"/>	<input checked="" type="checkbox"/>
Siam F (208)		<input checked="" type="checkbox"/>	<input checked="" type="checkbox"/>
Tangerine F (259)		<input checked="" type="checkbox"/>	<input checked="" type="checkbox"/>
Topaz F (203)		<input checked="" type="checkbox"/>	<input checked="" type="checkbox"/>
Vintage Rose F (319)		<input checked="" type="checkbox"/>	<input checked="" type="checkbox"/>
Crystal Effects			
Transparent Effects			
Crystal AB F (001 AB)		<input checked="" type="checkbox"/>	<input checked="" type="checkbox"/>
Crystal Blue Shade F (001 BLSH)		<input checked="" type="checkbox"/>	<input checked="" type="checkbox"/>
Crystal Golden Shadow F (001 GSHA)		<input checked="" type="checkbox"/>	<input checked="" type="checkbox"/>
Crystal Lilac Shadow F (001 LISH)		<input checked="" type="checkbox"/>	<input checked="" type="checkbox"/>
Crystal Luminous Green F (001 LUMG)		<input checked="" type="checkbox"/>	<input checked="" type="checkbox"/>
Crystal Silver Night F (001 SINI)		<input checked="" type="checkbox"/>	<input checked="" type="checkbox"/>
Crystal Silver Shade F (001 SSHA)		<input checked="" type="checkbox"/>	<input checked="" type="checkbox"/>
Metallic Effects			
Crystal Iridescent Green F (001 IRIG)		<input checked="" type="checkbox"/>	<input checked="" type="checkbox"/>
Crystal Rose Gold F (001 ROGL)		<input checked="" type="checkbox"/>	<input checked="" type="checkbox"/>

53 200 Chaton Montées



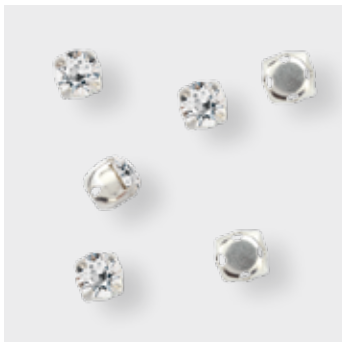
SS PP 31	
M 1,440 PCS	100%

53 201 Chaton Montées



SS SS 18	
M 1,440 PCS	100%

53 203 Chaton Montées



SS SS 29	
M 720 PCS	100%

53 200
53 201
53 203

Color of Casing	082 Silver	086 Gun Metal
Crystal		
Crystal F (001)	■	■
Colors		
Plain Colors		
Amethyst F (204)	■	■
Black Diamond F (215)	■	■
Dark Indigo F (288)	■	■
Dark Moss Green F (260)*	■	■
Denim Blue F (266)*	■	■
Fuchsia F (502)	■	■
Greige F (284)	■	■
Jet F (280)	■	■
Light Colorado Topaz F (246)	■	■
Light Siam F (227)	■	■
Light Silk F (261)*	■	■
Light Turquoise F (263)*	■	■
Peridot F (214)	■	■
Rose F (209)	■	■
Sapphire F (206)	■	■
Siam F (208)	■	■
Smoked Topaz F (220)	■	■
Tangerine F (259)*	■	■
Topaz F (203)	■	■
Vintage Rose F (319)	■	■
Crystal Effects		
Transparent Effects		
Crystal AB F (001 AB)	■	■
Crystal Blue Shade F (001 BLSH)*	■	■
Crystal Golden Shadow F (001 GSHA)	■	■
Crystal Lilac Shadow F (001 LISH)*	■	■
Crystal Luminous Green F (001 LUMG)*	■	■
Crystal Silver Night F (001 SINI)*	■	■
Crystal Silver Shade F (001 SSHA)	■	■
Metallic Effects		
Crystal Iridescent Green F (001 IRIG)*	■	■
Crystal Rose Gold F (001 ROGL)*	■	■

* These colors are not available for art. 53 201.

53 301 Rose Pins



SS SS 10
M 1,440 PCS 100%

53 302 Rose Pins



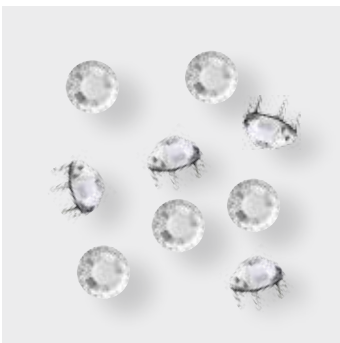
SS SS 16
M 1,440 PCS 100%

53 303 Rose Pins

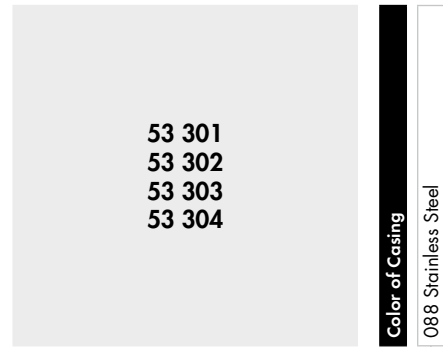


SS SS 20
M 720 PCS 100%

53 304 Rose Pins

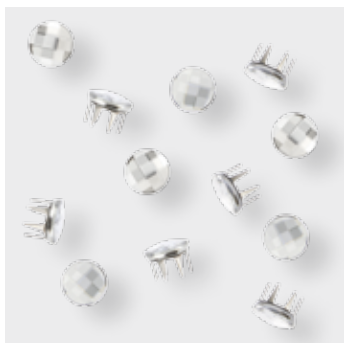


SS SS 34
M 288 PCS 100%



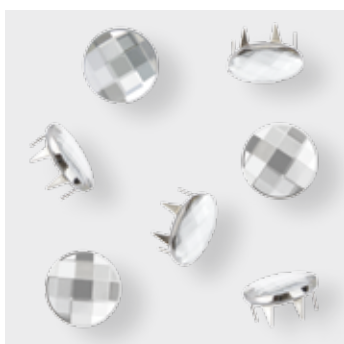
- Crystal**
- Crystal F (001)
- Colors**
- Plain Colors**
- Black Diamond F (215)
- Denim Blue F (266)
- Fern Green F (291)
- Greige F (284)
- Jet F (280)
- Khaki F (550)
- Light Colorado Topaz F (246)
- Light Siam F (227)
- Peridot F (214)
- Rose F (209)
- Sapphire F (206)
- Smoked Topaz F (220)
- Vintage Rose F (319)
- Crystal Effects**
- Transparent Effects**
- Crystal AB F (001 AB)
- Crystal Antique Pink F (001 ANTP)
- Crystal Blue Shade F (001 BLSH)
- Crystal Golden Shadow F (001 GSHA)
- Crystal Lilac Shadow F (001 LISH)
- Crystal Luminous Green F (001 LUMG)
- Crystal Silver Night F (001 SINI)
- Crystal Silver Shade F (001 SSHA)
- Metallic Effects**
- Crystal Iridescent Green F (001 IRIG)
- Crystal Metallic Light Gold F (001 MLGLD)
- Crystal Rose Gold F (001 ROGL)
- Color Effects**
- Metallic Effects**
- Jet Hematite F (280 HEM)
- Jet Nut F (280 NUT)

53 310 Chessboard Pin



SS 6 mm
M 288 PCS 100%

53 311 Chessboard Pin



SS 10 mm
M 72 PCS 100%

53 320 Rhombus Pin



SS 10x6 mm
M 288 PCS 100%

53 310
53 311

Color of Casing
088 Stainless Steel

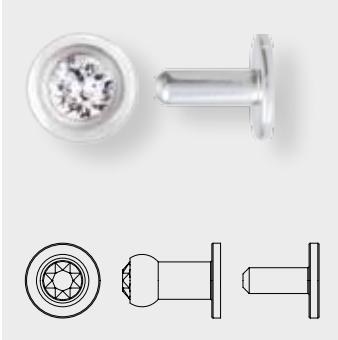
- Crystal**
- Crystal F (001)
- Colors**
- Plain Colors**
- Aquamarine F (202)
- Black Diamond F (215)
- Jet F (280)
- Peridot F (214)
- Topaz F (203)
- Crystal Effects**
- Transparent Effects**
- Crystal AB F (001 AB)
- Crystal Dorado F (001 DOR)
- Crystal Golden Shadow F (001 GSHA)
- Crystal Silver Shade F (001 SSHA)

53 320

Color of Casing
088 Stainless Steel

- Crystal**
- Crystal F (001)
- Colors**
- Plain Colors**
- Aquamarine F (202)
- Black Diamond F (215)
- Jet F (280)
- Light Rose F (223)
- Light Siam F (227)
- Crystal Effects**
- Transparent Effects**
- Crystal AB F (001 AB)
- Crystal Golden Shadow F (001 GSHA)
- Crystal Silver Shade F (001 SSHA)

53 730 Crystal Stud (long shaft)

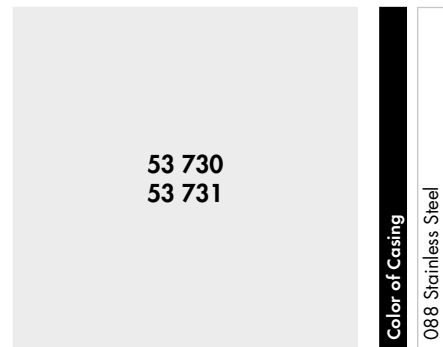


SS PP 24
M 48 PCS 100%

53 731 Crystal Stud (short shaft)



SS PP 24
M 48 PCS 100%



- Crystal**
- Crystal F (001)
- Colors**
- Plain Colors**
- Amethyst F (204)
- Black Diamond F (215)
- Dark Indigo F (288)
- Denim Blue F (266)
- Fuchsia F (502)
- Greige F (284)
- Jet F (280)
- Light Colorado Topaz F (246)
- Light Siam F (227)
- Light Turquoise F (263)
- Peridot F (214)
- Rose F (209)
- Sapphire F (206)
- Siam F (208)
- Smoked Topaz F (220)
- Topaz F (203)
- Vintage Rose F (319)
- Crystal Effects**
- Transparent Effects**
- Crystal AB F (001 AB)
- Crystal Blue Shade F (001 BLSH)
- Crystal Golden Shadow F (001 GSHA)
- Crystal Luminous Green F (001 LUMG)
- Crystal Silver Night F (001 SINI)
- Crystal Silver Shade F (001 SSHA)

