

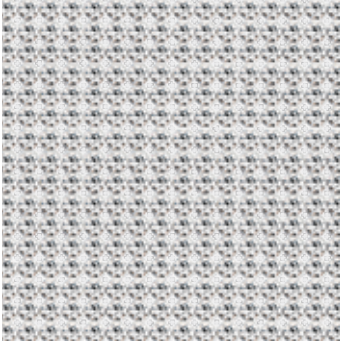


## Crystal Mesh

Crystal Mesh is a flexible metal mesh carrier with integrated loose crystals. The product is available in a wide range of colors and casings, either as a Hotfix version, which can be applied using heat, or as a No Hotfix version that can be hand- or machine-sewn. Customized solutions are possible and customers are able to choose special motifs incorporating up to nine colors. Crystal Mesh is suitable for use in a wide range of segments such as the textile and accessories segments.

## ARTICLE EXPLANATION - SHEETS

### 40 000



<b>SH</b> 100	
<b>S</b> ~500x200	
<b>SS</b> PP 21	
<b>M</b> 1 SH	<b>100%</b>

40 000	SH	S	SS	M	100%
Article number	Sheet	Sheet size in mm	Stone size	Minimum order quantity in sheets (SH)	Documentation size in %

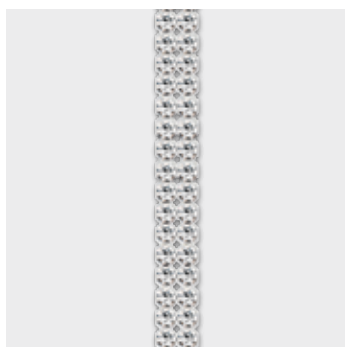
## ORDERING EXAMPLE & PRODUCT VARIETY EXPLANATION

40 000	100	082	001	NOHF
Article number	Sheet	Color of casing	Color of crystals	Hotfix Technology
	100 Standard sheet (~500x200 mm)	012 Black* 081 Gold** 082 Silver**	Please see the respective product matrix for all available code references.	HF With Hotfix glue NOHF Without Hotfix glue

\* Alu: 012 Black  
\*\*Brass: 081 Gold, 082 Silver

## ARTICLE EXPLANATION - ROWS

### 40 001



<b>R</b>	002-033
<b>SS</b>	PP 21
<b>M</b>	10 M
	100%

40 001	R	SS	M	100%
Article number	Number of rows	Stone size	Minimum order quantity in meters (M)	Documentation size in %
This article is available from 2 to 33 rows.				

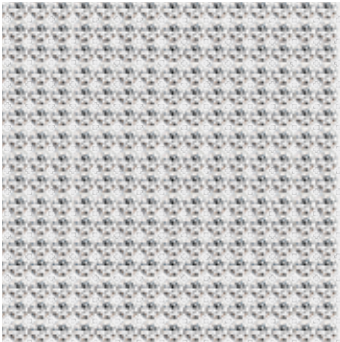
## ORDERING EXAMPLE & PRODUCT VARIETY EXPLANATION

40 001	002	082	001	HF
Article number	3-digit code for number of rows	Color of casing	Color of crystals	Hofix Technology
		012 Black*	Please see the respective product matrix for all available code references.	HF With Hofix glue
		081 Gold**		NOHF Without Hofix glue
		082 Silver**		

\* Alu: 012 Black  
 \*\*Brass: 081 Gold, 082 Silver

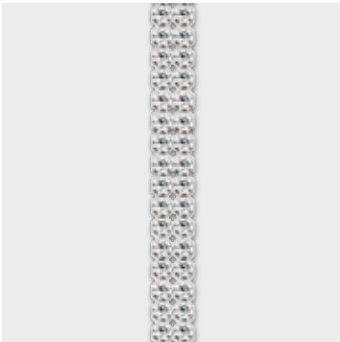
# Crystal Mesh

40 000



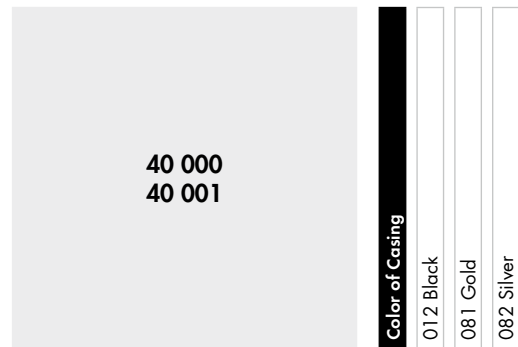
SH 100	
S ~500x200	
SS PP 21	
M 1 SH	100%

40 001



R 002-033	
SS PP 21	
M 10 M	100%

# Crystal Mesh Standard



Crystal	012 Black	081 Gold	082 Silver
Crystal F (001)	■	■	■
<b>Colors</b>			
<b>Plain Colors</b>			
Amethyst F (204)	■	■	■
Aquamarine F (202)	■	■	■
Black Diamond F (215)	■	■	■
Blue Zircon F (229)	■	■	■
Dark Indigo F (288)	■	■	■
Dark Moss Green F (260)	■	■	■
Denim Blue F (266)	■	■	■
Emerald F (205)	■	■	■
Fern Green F (291)	■	■	■
Fuchsia F (502)	■	■	■
Greige F (284)	■	■	■
Indian Pink F (289)	■	■	■
Jet F (280)	■	■	■
Jonquil F (213)	■	■	■
Light Amethyst F (212)	■	■	■
Light Colorado Topaz F (246)	■	■	■
Light Rose F (223)	■	■	■
Light Sapphire F (211)	■	■	■
Light Siam F (227)	■	■	■
Light Silk F (261)	■	■	■
Light Turquoise F (263)	■	■	■
Padparadscha F (542)	■	■	■
Peridot F (214)	■	■	■
Provence Lavender F (283)	■	■	■
Purple Velvet F (277)	■	■	■
Rose F (209)	■	■	■
Rose Peach F (262)	■	■	■
Sapphire F (206)	■	■	■
Sunflower F (292)	■	■	■
Siam F (208)	■	■	■
Silk F (391)	■	■	■
Smoked Topaz F (220)	■	■	■
Tangerine F (259)	■	■	■
Tanzanite F (539)	■	■	■
Topaz F (203)	■	■	■
Vintage Rose F (319)	■	■	■
Light Multi F (908)*	■	■	■
Rainbow Multi F (909)**	■	■	■

\* Light Multi F consists of Crystal, Peridot, Light Amethyst, Jonquil, Aquamarine.

\*\* Rainbow Multi F consists of Topaz, Light Siam, Fuchsia, Peridot, Sapphire.

40 000  
40 001

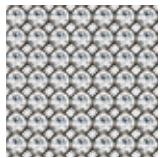
Color of Casing	012 Black	081 Gold	082 Silver
<b>Opal Colors</b>			
Palace Green Opal F (393)	■	■	■
Rose Water Opal F (395)	■	■	■
<b>Ceramic Colors</b>			
Marbled Black (653)	■	■	■
Marbled Blue (654)	■	■	■
Marbled Light Grey (657)	■	■	■
Marbled Terracotta (655)	■	■	■
Marbled Yellow (652)	■	■	■
<b>Crystal Effects</b>			
<b>Transparent Effects</b>			
Crystal AB F (001 AB)	■	■	■
Crystal Antique Pink F (001 ANTP)	■	■	■
Crystal Blue Shade F (001 BLSH)	■	■	■
Crystal Bronze Shade F (001 BRSH)	■	■	■
Crystal Golden Shadow F (001 GSHA)	■	■	■
Crystal Lilac Shadow F (001 LISH)	■	■	■
Crystal Luminous Green F (001 LUMG)	■	■	■
Crystal Moonlight F (001 MOL)	■	■	■
Crystal Silver Night F (001 SINI)	■	■	■
Crystal Silver Shade F (001 SSHA)	■	■	■

40 000  
40 001

Color of Casing	012 Black	081 Gold	082 Silver
<b>Metallic Effects</b>			
Crystal Dorado F (001 DOR)	■	■	■
Crystal Iridescent Green F (001 IRIG)	■	■	■
Crystal Metallic Blue F (001 METBL)	■	■	■
Crystal Metallic Light Gold F (001 MLGLD)	■	■	■
Crystal Rose Gold F (001 ROGL)	■	■	■
<b>Color Effects</b>			
<b>Metallic Effects</b>			
Jet Hematite F (280 HEM)	■	■	■
Jet Nut F (280 NUT)	■	■	■

**AVAILABLE CASING COLORS**

Crystal Mesh Standard is available with black, gold and silver casing. Please see the product matrix for all available options.



012 Black



081 Gold



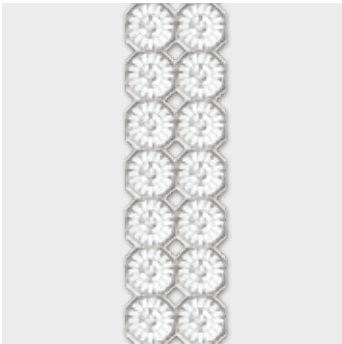
082 Silver

## 40 100



SH	100	
S	~500x200	
SS	SS 24	
M	1 SH	100%

## 40 101



R	002-018	
SS	SS 24	
M	10 M	100%

40 100  
40 101

Color of Casing			
012 Black			
081 Gold			
082 Silver			

Crystal			
Crystal F (001)			
Colors			
Plain Colors			
Black Diamond F (215)			
Jet F (280)			
Light Colorado Topaz F (246)			
Light Peach F (362)			
Light Sapphire F (211)			
Light Siam F (227)			
Rose F (209)			
Ceramic Colors			
Marbled Black (653)			
Marbled Blue (654)			
Marbled Light Grey (657)			
Marbled Terracotta (655)			
Marbled Yellow (652)			
Crystal Effects			
Transparent Effects			
Crystal AB F (001 AB)			
Crystal Golden Shadow F (001 GSHA)			
Crystal Silver Shade F (001 SSHA)			
Color Effects			
Metallic Effects			
Jet Hematite F (280 HEM)			

AVAILABLE COLORS & EFFECTS

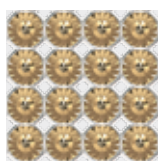
Colors



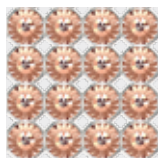
Crystal F (001)



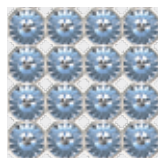
Rose F (209)



Light Colorado Topaz F (246)



Light Peach F (362)



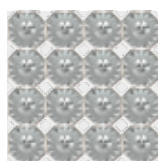
Light Sapphire F (211)



Jet (280)

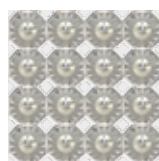


Light Siam F (227)

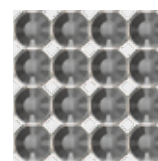


Black Diamond F (215)

Effects



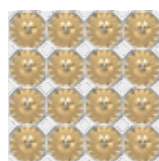
Crystal Silver Shade F (001\_SSHA)



Jet Hematite (280\_HEM)

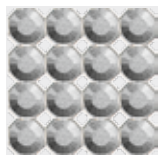


Crystal Aurore Boreale F (001\_AB)



Crystal Golden Shadow F (001\_GSHA)

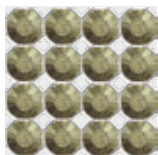
AVAILABLE CERAMICS COLORS



Marbled Light Grey (657)



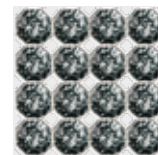
Marbled Terracotta (655)



Marbled Yellow (652)



Marbled Blue (654)



Marbled Black (653)

AVAILABLE CASING COLORS

Crystal Mesh XL is available with black, gold and silver casing. Please see the product matrix for all available options.



012 Black



081 Gold

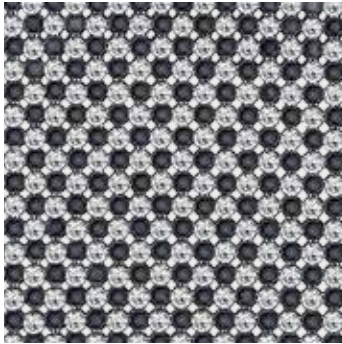


082 Silver



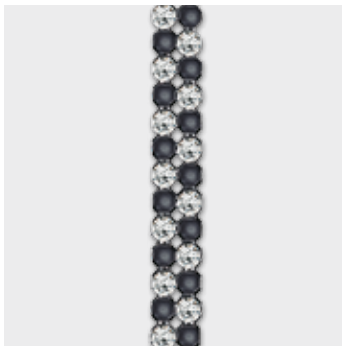
# Crystal Mesh

40 200



SH 100	
S ~500x200	
SS PP 21	
M 1 SH	100%

40 201



R 002-033	
SS PP 21	
M 10 M	100%

# Crystal Mesh Metallisée

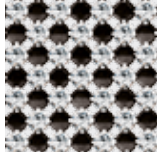


	Color of Casing		
	012 Black	081 Gold	082 Silver
<b>Crystal</b>			
Crystal F (001)	■	■	■
<b>Colors</b>			
<b>Plain Colors</b>			
Amethyst F (204)	■	■	■
Black Diamond F (215)	■	■	■
Dark Moss Green F (260)	■	■	■
Denim Blue F (266)	■	■	■
Greige F (284)	■	■	■
Jet F (280)	■	■	■
Light Colorado Topaz F (246)	■	■	■
Light Sapphire F (211)	■	■	■
Light Silk F (261)	■	■	■
Light Turquoise F (263)	■	■	■
Tangerine F (259)	■	■	■
<b>Ceramic Colors</b>			
Marbled Black (653)	■	■	■
Marbled Blue (654)	■	■	■
Marbled Light Grey (657)	■	■	■
Marbled Terracotta (655)	■	■	■
Marbled Yellow (652)	■	■	■
<b>Crystal Effects</b>			
<b>Transparent Effects</b>			
Crystal AB F (001 AB)	■	■	■
Crystal Blue Shade F (001 BLSH)	■	■	■
Crystal Bronze Shade F (001 BRSH)	■	■	■
Crystal Golden Shadow F (001 GSHA)	■	■	■
Crystal Lilac Shadow F (001 LISH)	■	■	■
Crystal Luminous Green F (001 LUMG)	■	■	■
Crystal Moonlight F (001 MOL)	■	■	■
Crystal Silver Night F (001 SINI)	■	■	■
Crystal Silver Shade F (001 SSHA)	■	■	■
<b>Metallic Effects</b>			
Crystal Dorado F (001 DOR)	■	■	■
Crystal Iridescent Green F (001 IRIG)	■	■	■
Crystal Metallic Blue F (001 METBL)	■	■	■
Crystal Metallic Light Gold F (001 MGLD)	■	■	■
Crystal Rose Gold F (001 ROGL)	■	■	■
<b>Color Effects</b>			
<b>Metallic Effects</b>			
Jet Hematite F (280 HEM)	■	■	■
Jet Nut F (280 NUT)	■	■	■

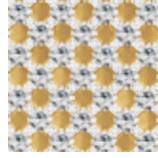
---

## AVAILABLE CASING COLORS

Crystal Mesh Métallisée is available with black, gold and silver casing. Please see the respective product matrix for all available options.



012 Black



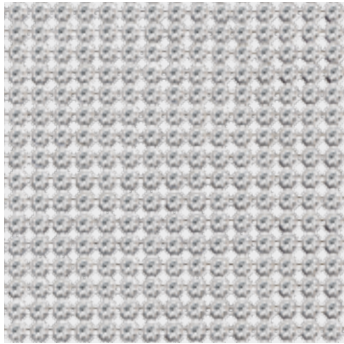
081 Gold



082 Silver

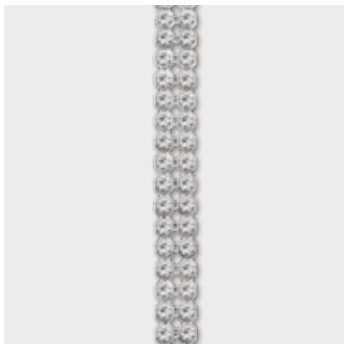
# Crystal Mesh

40 400



SH	100	
S	~500x200	
SS	PP 14	
M	1 SH	100%

40 401



R	002-033	
SS	PP 14	
M	10 M	100%

# Crystal Aerial Mesh



40 400  
40 401

Color of Casing

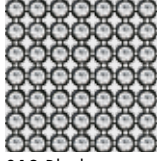
012 Black  
081 Gold  
082 Silver

	012 Black	081 Gold	082 Silver
<b>Crystal</b>			
Crystal F (001)	■	■	■
<b>Colors</b>			
<b>Plain Colors</b>			
Amethyst F (204)	■	■	■
Black Diamond F (215)	■	■	■
Dark Moss Green F (260)	■	■	■
Denim Blue F (266)	■	■	■
Greige F (284)	■	■	■
Jet F (280)	■	■	■
Light Colorado Topaz F (246)	■	■	■
Light Sapphire F (211)	■	■	■
Light Silk F (261)	■	■	■
Light Turquoise F (263)	■	■	■
Tangerine F (259)	■	■	■
<b>Crystal Effects</b>			
<b>Transparent Effects</b>			
Crystal AB F (001 AB)	■	■	■
Crystal Blue Shade F (001 BLSH)	■	■	■
Crystal Bronze Shade F (001 BRSH)	■	■	■
Crystal Golden Shadow F (001 GSHA)	■	■	■
Crystal Lilac Shadow F (001 LISH)	■	■	■
Crystal Luminous Green F (001 LUMG)	■	■	■
Crystal Moonlight F (001 MOL)	■	■	■
Crystal Silver Night F (001 SINI)	■	■	■
Crystal Silver Shade F (001 SSHA)	■	■	■
<b>Metallic Effects</b>			
Crystal Dorado F (001 DOR)	■	■	■
Crystal Iridescent Green F (001 IRIG)	■	■	■
Crystal Metallic Blue F (001 METBL)	■	■	■
Crystal Metallic Light Gold F (001 MLGLD)	■	■	■
Crystal Rose Gold F (001 ROGL)	■	■	■
<b>Color Effects</b>			
<b>Metallic Effects</b>			
Jet Hematite F (280 HEM)	■	■	■
Jet Nut F (280 NUT)	■	■	■

---

## AVAILABLE CASING COLORS

Crystal Aerial Mesh is available with black, gold and silver casing. Please see the respective product matrix for all available options.



012 Black



081 Gold



082 Silver

---

## AVAILABLE COLORS & EFFECTS

Please see all available casings and crystal colors & effects on the next pages.

# Crystal Mesh

# Crystal Aerial Mesh

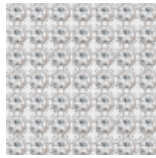
**Crystal F (001)**



012 Black

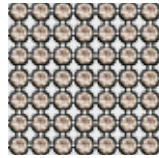


081 Gold

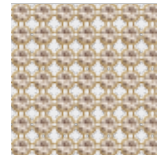


082 Silver

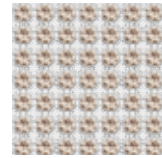
**Greige F (284)**



012 Black

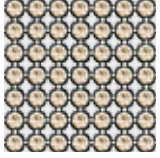


081 Gold



082 Silver

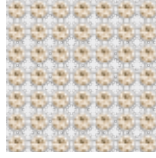
**Light Silk F (261)**



012 Black

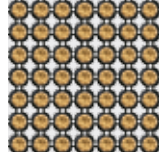


081 Gold

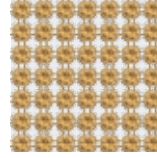


082 Silver

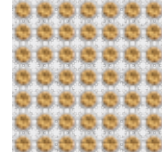
**Light Colorado Topaz F (246)**



012 Black

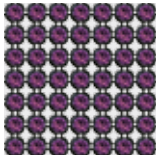


081 Gold

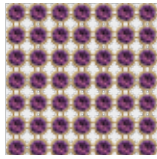


082 Silver

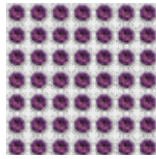
**Amethyst F (204)**



012 Black

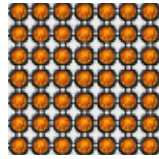


081 Gold

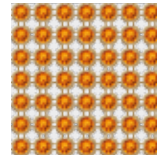


082 Silver

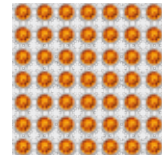
**Tangerine F (259)**



012 Black

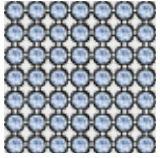


081 Gold

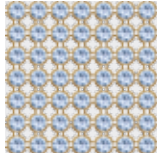


082 Silver

**Light Sapphire F (211)**



012 Black

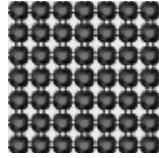


081 Gold

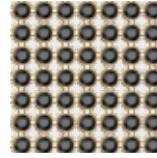


082 Silver

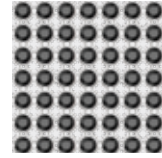
**Jet F (280)**



012 Black

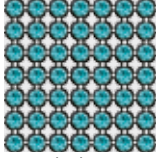


081 Gold

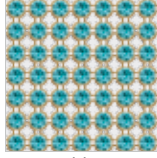


082 Silver

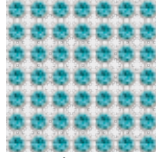
**Light Turquoise F (263)**



012 Black

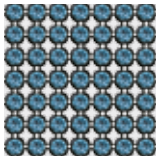


081 Gold

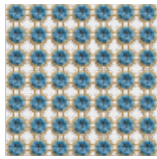


082 Silver

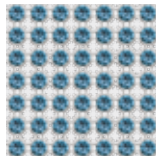
**Denim Blue F (266)**



012 Black



081 Gold

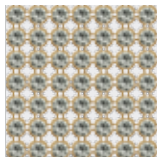


082 Silver

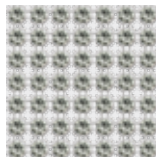
**Black Diamond F (215)**



012 Black



081 Gold

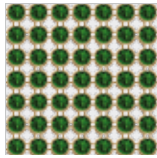


082 Silver

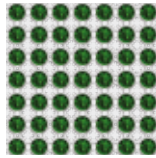
**Dark Moss Green F (260)**



012 Black



081 Gold



082 Silver

Classic Colors  
Exclusive Colors

# Crystal Mesh

# Crystal Aerial Mesh

**Crystal Silver Shade F (001 SSHA)**



012 Black

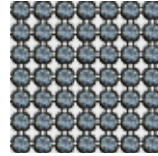


081 Gold

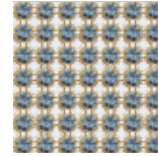


082 Silver

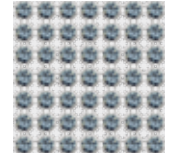
**Crystal Blue Shade F (001 BLSH)**



012 Black

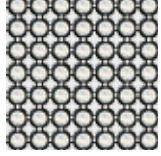


081 Gold



082 Silver

**Crystal Moonlight F (001 MOL)**



012 Black

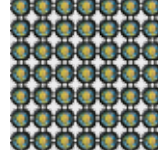


081 Gold

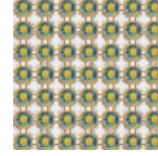


082 Silver

**Crystal Iridescent Green F (001 IRIG)**



012 Black

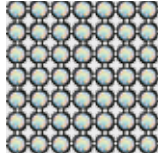


081 Gold

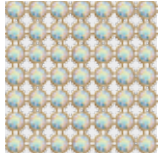


082 Silver

**Crystal Aurore Boreale F (001 AB)**



012 Black

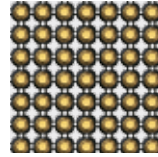


081 Gold

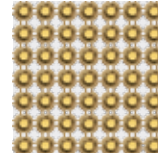


082 Silver

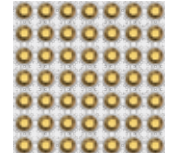
**Crystal Dorado F (001 DOR)**



012 Black



081 Gold



082 Silver

**Crystal Luminous Green F (001 LUMG)**



012 Black

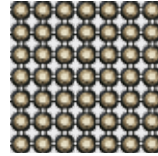


081 Gold

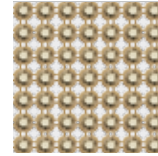


082 Silver

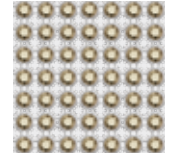
**Crystal Metallic Light Gold F (001 MLGLD)**



012 Black



081 Gold



082 Silver

**Crystal Golden Shadow F (001 GSHA)**



012 Black

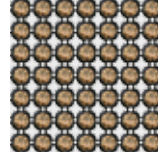


081 Gold

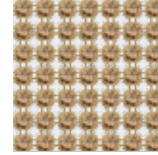


082 Silver

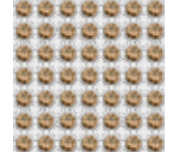
**Crystal Bronze Shade F (001 BRSH)**



012 Black

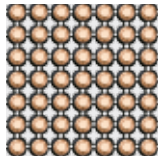


081 Gold

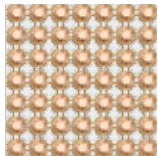


082 Silver

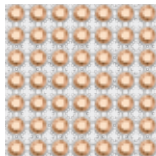
**Crystal Rose Gold F (001 ROGL)**



012 Black

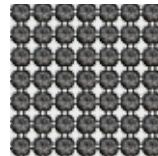


081 Gold

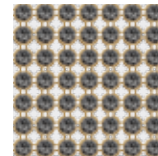


082 Silver

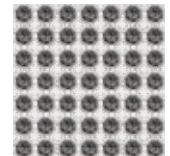
**Crystal Silver Night F (001 SINI)**



012 Black

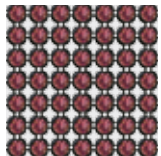


081 Gold

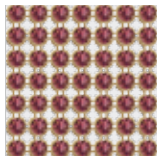


082 Silver

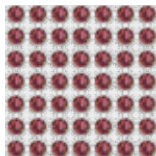
**Crystal Lilac Shadow F (001 LISH)**



012 Black

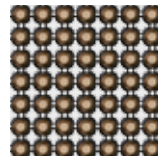


081 Gold

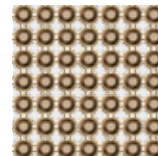


082 Silver

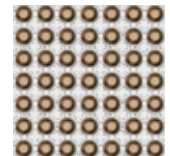
**Jet Nut F (280 NUT)**



012 Black

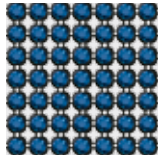


081 Gold

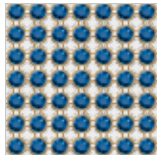


082 Silver

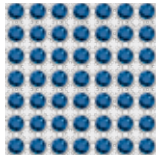
**Crystal Metallic Blue F (001 METBL)**



012 Black

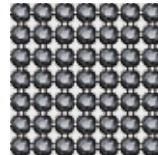


081 Gold

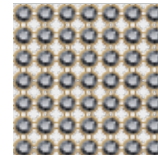


082 Silver

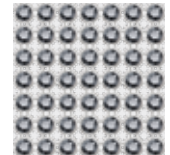
**Jet Hematite F (280 HEM)**



012 Black



081 Gold



082 Silver

Classic Colors  
Exclusive Colors

**ARTICLE EXPLANATION**

**40 701** Crystal Mesh Banding



<b>R</b> 006	
<b>SS</b> PP 21	
<b>M</b> 22 PCS	<b>100%</b>

<b>40 701</b>	<b>R</b>	<b>SS</b>	<b>M</b>
Article number	Number of rows	Stone size	Minimum order quantity in pieces (PCS)
This article is available with between four and six rows.			

**ORDERING EXAMPLE & PRODUCT VARIETY EXPLANATION**

<b>40 701</b>	<b>004</b>	<b>S</b>	<b>B022</b>	<b>082</b>	<b>001</b>
Article number	3-digit code for number of rows	Size	Color of banding	Color of casing	Color of crystals
	004 rows	S (151 mm)		012 Black	Please see the respective product matrix for all available code references.
	005 rows	M (162 mm)		081 Gold	
	006 rows	L (174 mm)		082 Silver	

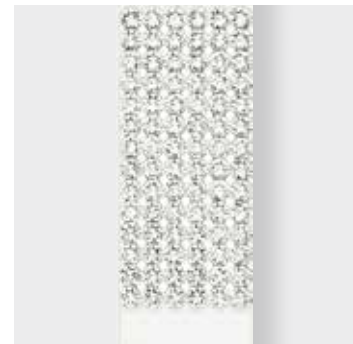
**AVAILABLE ROWS**



4 rows (004)



5 rows (005)



6 rows (006)

40 701		Color of Casing			Available Rows		
		012 Black	081 Gold	082 Silver	4 rows (004)	5 rows (005)	6 rows (006)
<b>Crystal</b>		<b>Fabric Color</b>					
Crystal F (001)					B022		
<b>Colors</b>							
<b>Plain Colors</b>							
Amethyst F (204)					B019		
Amethyst F (204)					B023		
Aquamarine F (202)					B009		
Black Diamond F (215)					B002		
Blue Zircon F (229)					B011		
Dark Indigo F (288)					B013		
Denim Blue F (266)					B010		
Emerald F (205)					B014		
Fuchsia F (502)					B025		
Jet F (280)					B012		
Light Colorado Topaz F (246)					B006		
Light Colorado Topaz F (246)					B016		
Light Rose F (223)					B021		
Purple Velvet F (277)					B026		
Rose F (209)					B018		
Siam F (208)					B017		
Smoked Topaz F (220)					B008		
<b>Opal Colors</b>							
Palace Green Opal F (393)					B015		
<b>Crystal Effects</b>							
<b>Transparent Effects</b>							
Crystal AB F (001 AB)					B004		
Crystal AB F (001 AB)					B020		
Crystal Golden Shadow F (001 GSHA)					B005		
Crystal Silver Night F (001 SINI)					B001		
Crystal Silver Shade F (001 SSHA)					B003		
<b>Metallic Effects</b>							
Crystal Metallic Blue F (001 METBL)					B024		
<b>Color Effects</b>							
<b>Metallic Effects</b>							
Jet Hematite F (280 HEM)					B012		
Jet Nut F (280 NUT)					B008		



ARTICLE EXPLANATION

**40 769** **04**



<b>C</b>	012-206/266/280/001METBL/288
<b>E</b>	PP21/PP21/PP21/PP21/PP21
<b>S</b>	~239x82
<b>M</b>	4 PCS <span style="float: right;">17%</span>

40 769	04	C	E	S	M	17%
Article number	This product is shown on flag number 04	Color assortment	Elements  For details, please refer to the sizes overview at the end of the Collection.	Motif size in mm	Minimum order quantity in pieces (PCS)	Documentation size in %

ORDERING EXAMPLE & PRODUCT VARIETY EXPLANATION

40 769	012	206	266	280	001METBL	288
Article number	Color of casing	Crystal color corresponding to element 1; color of most frequently used element in the motif	Crystal color corresponding to element 2; color of second most frequently used element in the motif	Crystal color corresponding to element 3; color of third most frequently used element in the motif	Crystal color corresponding to element 4; color of fourth most frequently used element in the motif	Crystal color corresponding to element 5; color of fifth most frequently used element in the motif

Please see the respective product matrix for all available code references.

\* Alu: 012 Black  
 \*\*Brass: 081 Gold, 082 Silver

# Crystal Mesh

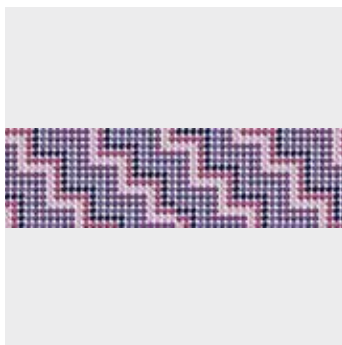
# Motifs

# Standard Collection



Standard Collection

40 756



C	012-277/204/502/212/539/288
E	PP21/PP21/PP21/PP21/PP21/PP21
S	~200x41
M	8 PCS
	20%

40 761

04



C	012-280/280HEM/001IRIG/001DOR/393/001MLGLD/291/213/391
E	PP21/PP21/PP21/PP21/PP21/PP21/
S	~253x68
M	2 PCS
	10%

40 764

04



C	012-280/284/001MLGLD/001GSHA/246/280HEM
E	PP21/PP21/PP21/PP21/PP21/PP21
S	~168x192
M	2 PCS
	13%

40 765

04



C	012-280HEM/246/284/001GSHA/001MLGLD/280
E	PP21/PP21/PP21/PP21/PP21/PP21
S	~168x192
M	2 PCS
	13%

40 768



C	012-206/284/001METBL/001MLGLD/288
E	PP21/PP21/PP21/PP21/PP21
S	~239x62
M	6 PCS
	17%

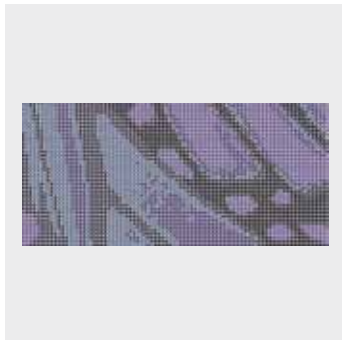
40 769

04



C	012-206/266/280/001METBL/288
E	PP21/PP21/PP21/PP21/PP21
S	~239x82
M	4 PCS
	17%

40 770



C	012-001METBL/280HEM/539/277/280
E	PP21/PP21/PP21/PP21/PP21
S	~253x118
M	1 PCS
	16%

40 774

06



C	082-001SSHA/001METBL/288/654
E	PP21/PP21/PP21/PP21
S	~109x62
M	12 PCS
	35%

40 775

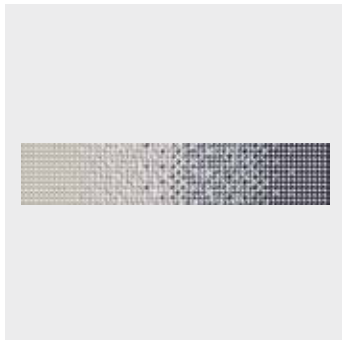
06



C	012-653/001SSHA/280
E	PP21/PP21/PP21
S	~130x65
M	9 PCS
	30%

40 776

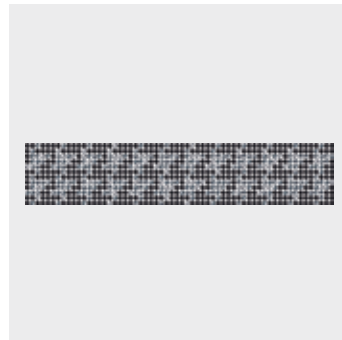
06



C	082-657/MBBK/001SSHA/280HEM
E	PP21/PP21/PP21/PP21
S	~177x35
M	10 PCS
	23%

40 777

06



C	012-280/653
E	PP21/PP21
S	~177x35
M	10 PCS
	23%

# Crystal Mesh

# Motifs

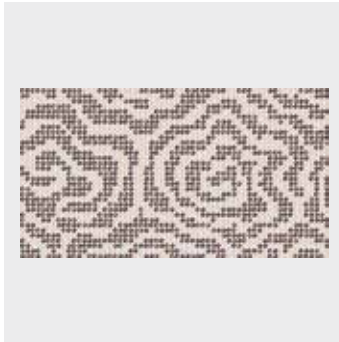
# Standard Collection

40 778 06



C 081-652/246/213/001DOR  
E PP21/PP21/PP21/PP21  
S ~177x97  
M 4 PCS 23%

40 779 06



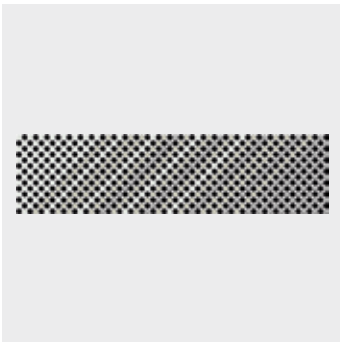
C 082-655/391  
E PP21/PP21  
S ~177x97  
M 4 PCS 23%

40 786 05



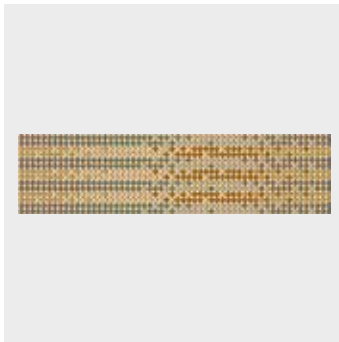
C 012-001MOL/266/001METBL/288  
E PP21/PP21/PP21/PP21  
S ~212x174  
M 2 PCS 20%

40 787 05



C 012-001SSHA/001MOL/001SINI  
E PP21/PP21/PP21  
S ~165x41  
M 12 PCS 25%

40 788 05



C 081-001METBL/266/211/001MLGLD/  
284/001BRSH  
E PP14/PP14/PP14/PP14/PP14/PP14  
S ~165x41  
M 12 PCS 25%

40 789 05



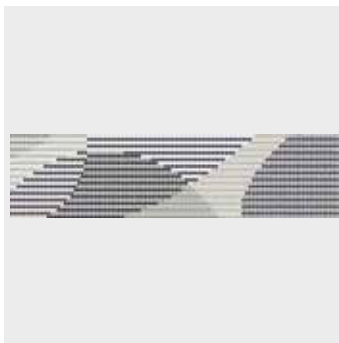
C 082-284/277/539/283  
E PP21/PP21/PP21/PP21  
S ~165x71  
M 6 PCS 25%

40 790 05



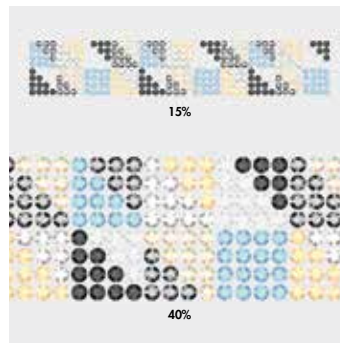
C 082-001MOL/204/001GSHA/001SINI/  
212/001MLGLD  
E PP21/PP21/PP21/PP21/PP21/PP21  
S ~168x71  
M 4 PCS 25%

40 791 05



C 012-280HEM/001SINI/284/001SSHA/  
001MOL/280/215  
E PP21/PP21/PP21/PP21/PP21/PP21  
S ~289x74  
M 2 PCS 15%

40 909 02



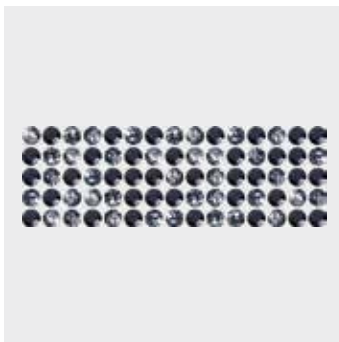
C 082-211/280HEM/001/280/001SSHA/  
001AB/001GSHA  
E SS24/SS24/SS24/SS24/SS24/SS24  
S ~263x47  
M 4 PCS

40 910 02



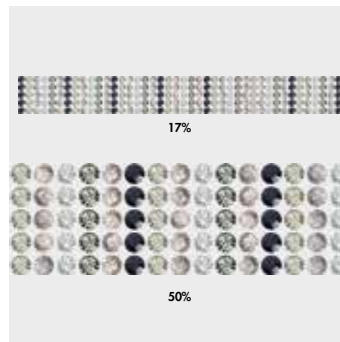
C 012280HEM7001AB/362/001SSHA/209/246  
E SS24/SS24/SS24/SS24/SS24/SS24  
S ~107x119  
M 4 PCS 30%

40 919\* 07



C 012-653/280HEM  
E SS24/SS24  
S ~89x29  
M 35 PCS 45%

40 920 07

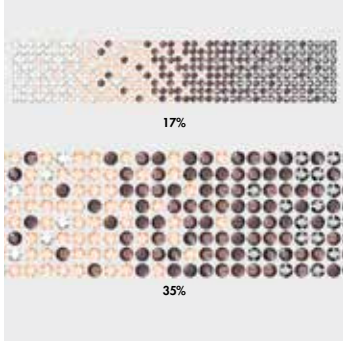


C 082-657/280HEM/001SSHA/215/001  
E SS24/SS24/SS24/SS24/SS24  
S ~251x29  
M 7 PCS

\* Motif can be ordered in different color combinations. Please refer to the Standard Flag no. 08 for inspiration.

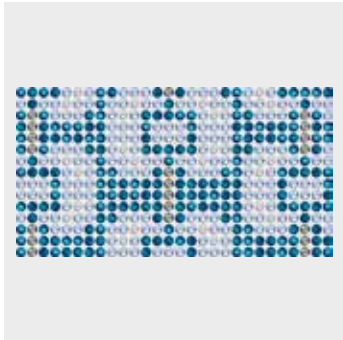
# Crystal Mesh

40 921 07



C	081-655/280HEM/001SSHA/362
E	SS24/SS24/SS24/SS24
S	~251x47
M	4 PCS

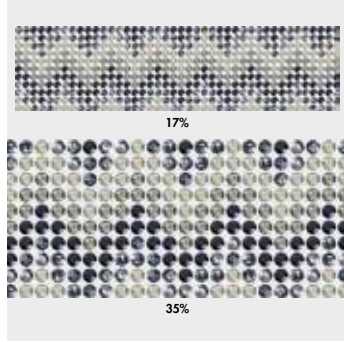
40 924 07



C	082-654/211/001/215
E	SS24/SS24/SS24/SS24
S	~167x89
M	4 PCS
	25%

# Motifs

40 922 07



C	012-653/001SSHA/280HEM/215
E	SS24/SS24/SS24/SS24
S	~251x65
M	3 PCS

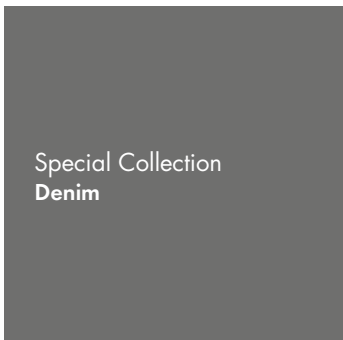
# Standard Collection

40 923 07



C	081-652/220/001GSHA/215
E	SS24/SS24/SS24/SS24
S	~167x89
M	4 PCS
	25%

# Crystal Mesh



# Motifs

40 792 03



C	082-001AB/001LUMG/214
E	PP21/PP21/PP21
S	~71x32
M	42 PCS
	60%

# Special Collection

# Crystal Mesh

## PRODUCT DETAILS

Article Size	Packing Unit = Minimum Order Quantity	Average Net Weight in Gram per Packing Unit Alu*	Average Net Weight in Gram per Packing Unit Brass**
<b>40 000</b> 100	1 sheet	270 g	440 g
<b>40 001</b> 002-033	10 meters	8.3 g per row/meter	13 g per row/meter
<b>40 100</b> 100	1 sheet	448 g	672 g
<b>40 101</b> 002-018	10 meters	24.8 g per row/meter	37.2 g per row/meter
<b>40 200</b> 100	1 sheet	180 g	332 g
<b>40 201</b> 002-033	10 meters	5.5 g per row/meter	10 g per row/meter
<b>40 400</b> 100	1 sheet	170 g	327 g
<b>40 401</b> 022-033	10 meters	5.2 g per row/meter	9.9 g per row/meter

\* Alu: 012 Black

\*\*Brass: 081 Gold, 082 Silver

A special motif is any individual design created by the customer, which is different from the Crystal Mesh Standard or Crystal Inspirations Collection. This service opens up many customization possibilities and enables you to profit from Swarovski's longtime experience and design expertise. A range of customization options for existing motifs is available (see "Customization Possibilities" below). You may also submit sketches of a design that will suit your special needs – such as a brand image or an image to suit a particular sales campaign. This will then be made up according to your specifications using Computer Aided Design, which allows for easy adjustments according to your needs.

---

#### **CUSTOMIZATION POSSIBILITIES**

- Change of size of an existing motif
- Logos or brand names
- Creation of single motifs or rows
- Up to nine colors are possible per Crystal Mesh Motif.

---

#### **ORDERING PROCESS**

Send the request with a drawing you wish to order to your nearest Swarovski sales office. Make sure you include all measurements to the desired motif. Please also indicate which product group your special motif refers to (Crystal Mesh Standard, Crystal Aerial Mesh etc.). You will then receive a quotation including your article number, minimum order quantity, price, and the line drawing of your special motif in PDF format. Please contact your Swarovski sales office again, if any changes need to be made. Your special motif will be produced and delivered following your confirmation.

---

#### **PLEASE NOTE**

Please always submit your drawing of the desired motif to represent it in the actual size you require. A small sketch, when enlarged to the desired size, will have blurred lines that will make it difficult to correctly reinterpret. Pictures or drawings representing 100% size of the design or very good quality scans in JPG, BMP or DXF format will ensure that we have clear data to work with. These can also be sent via email or on a CD-ROM. If sending a sewing pattern, please include the whole pattern and not just cut outs. When the sketch is submitted as a hard copy by fax or e-mail, please include a scale legend (e.g. copy/scan with ruler next to the drawing). This will ensure that the desired size of the motif can be identified.

Special productions are generally offered to all our customers if feasibility is given and our General Terms and Conditions are applied. Please note that the simple order of a design does not grant exclusive production of this design to the customer.